



Main Line | ART CENTER

A vibrant, stylized illustration for a summer art camp. It features a large purple face with long hair at the top, a boy in a wheelchair with a green pencil as a ramp, a boy reading a book with a stack of books, a boy sitting on a star-patterned rug, and various art supplies like a camera, a paint palette, and a large green pencil. The background is a mix of purple, blue, and orange geometric shapes.

SUMMER OF COLOR

I'M A
COLORING
BOOK!

SUMMER ART CAMPS for ages 5-16

June 15 - August 21 | One-Week Sessions

Register now at mainlineart.org or give us a call at 610.525.0272

746 Panmure Rd, Haverford PA

CAMP STRUCTURE

Welcome to our Summer Art Camp, where creativity comes to life! Designed for artists ages 5 to 16, our camp provides a fun and inspiring environment for children and teens to explore their artistic talents in real art studios. Whether your child is a budding artist or already has some experience, our camp fosters growth, imagination, and self-expression in a supportive and hands-on setting. Join us this summer to create, learn, and discover the world of art!

Campers registered for multiple weeks can expect a variety of lessons with our experienced teaching artists who bring their own creative flair to the classroom. Class sizes are small, and safety is our first priority. Pair morning and afternoon camps for a full-day experience, or choose a half day camp. All campers must bring a snack, and full-day campers must also bring a lunch. Students spend most of the day in our studios with breaks outside if weather permits. We end each week with an Art Party on Friday at 3 pm to celebrate your camper's creative accomplishments.

Join us this summer to make some colorful new memories!



Each week, we invite families and friends to celebrate their camper's artistic achievements! Our youngest campers, Palette Pals, will exhibit select artworks in our galleries. Pre-Teens and Teens will welcome you into their studios for a true open studio experience! You'll view their work and see all the supplies, tools and equipment that helped shape their artistic journey.

Join us each week on the last day of camp at **3 pm!**

PALETTE PALS AGES 5-9

- A tour of art styles and mediums that focus on fun

- Classes are leveled by age so students engage with their peers through age-appropriate art experiences

- Students work with multiple teaching artists in various studios throughout the building

PRE-TEEN STUDIOS AGES 10-12

- Focused, in-depth learning and experimentation with a single medium

- Techniques are more advanced, and the learning is faster paced

- Students work with a single teaching artist in a dedicated studio

TEEN STUDIOS AGES 13-16

- Mastery of new techniques and unique studio topics

- Flexibility allows for student independence and experimentation

- Students work with a single teaching artist in a dedicated studio



PRE-TEEN & TEEN STUDIO DESCRIPTIONS

DRAWING & PAINTING

Portrait Drawing: Explore proportion, form, gesture, and composition while using a variety of drawing and painting materials.

Drawing & Painting Intensive: Explore traditional techniques in a variety of 2-D media while training your eye to work from observation.

Watercolor & More: Explore the incredible world of watercolor, ink, or gouache while creating deep, layered artworks.

Colored Pencils: Test your drawing skills while introducing complex color and layering.



Nature & Wildlife Illustration: Celebrate your favorite flora and fauna as you develop your drawing skills and refine painting techniques.

Sketchbooks: Capture ideas and images as you create a sketchbook using observational and gesture drawing, text, and collage.

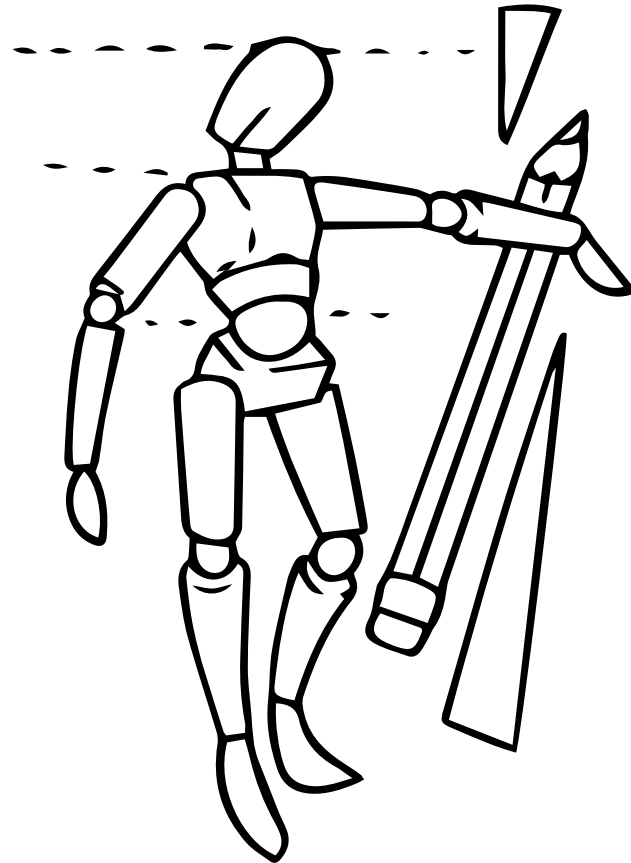


Figure Drawing: Explore proportion, form, gesture, and composition as you draw from both images and a clothed model.

Abstract Painting: Express yourself as you work with color, pattern, and form to create abstract masterpieces.

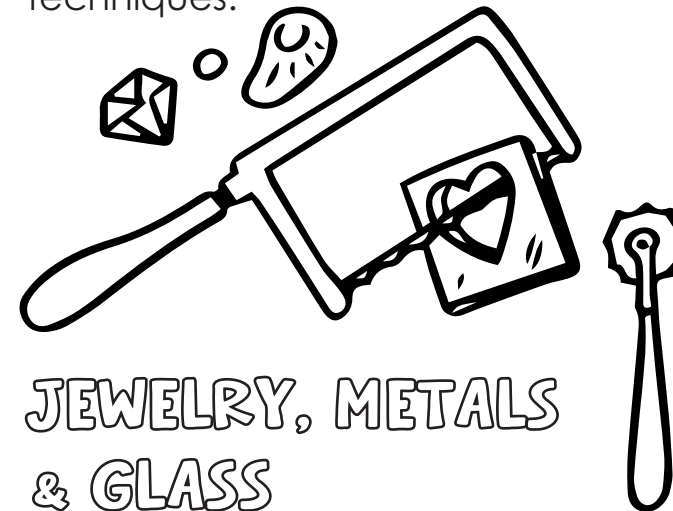
CERAMICS & SCULPTURE

Wheelthrowing Boot Camp: Turn a ball of clay into art on the potter's wheel and master centering, throwing, and glazing!

Clay Sculpture: Learn to handbuild with clay as you make cups, bowls, and sculptures out of this versatile material.

Mosaics: Create intricate patterns and designs in stone, ceramics, glass, and found objects.

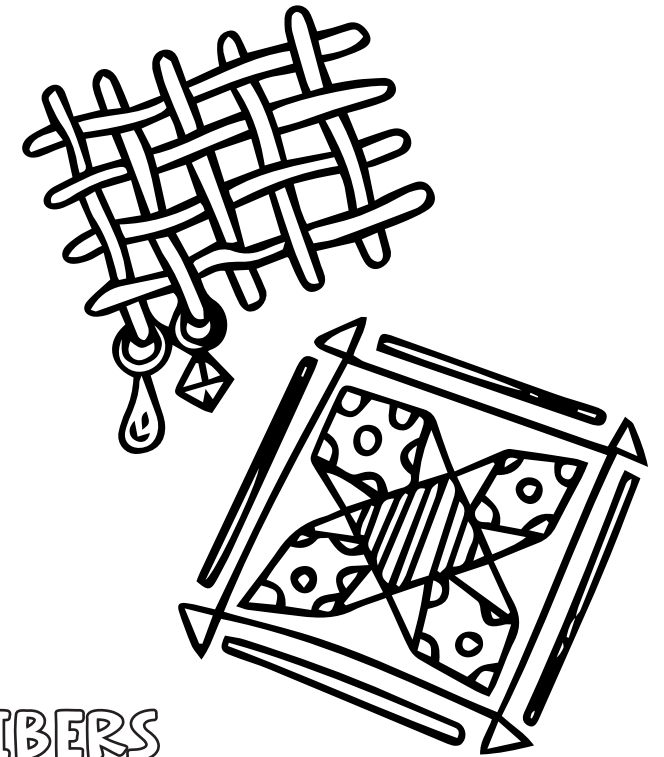
Sculpture Lab: Learn fundamentals of design and construction as you bring your 2-D designs to life using mixed techniques.



JEWELRY, METALS & GLASS

Jewelry & Metals: Saw, polish, stamp, and combine metals to create sculptural or wearable works of art.

Glass Fusing: Explore light, layering, and color as you learn to cut glass, compose designs, and create masterpieces.



FIBERS

Intro to Fibers: Explore the wonderful world of fibers! Through crochet, weaving, felting, knitting, and more, explore a new technique each day.

PHOTOGRAPHY

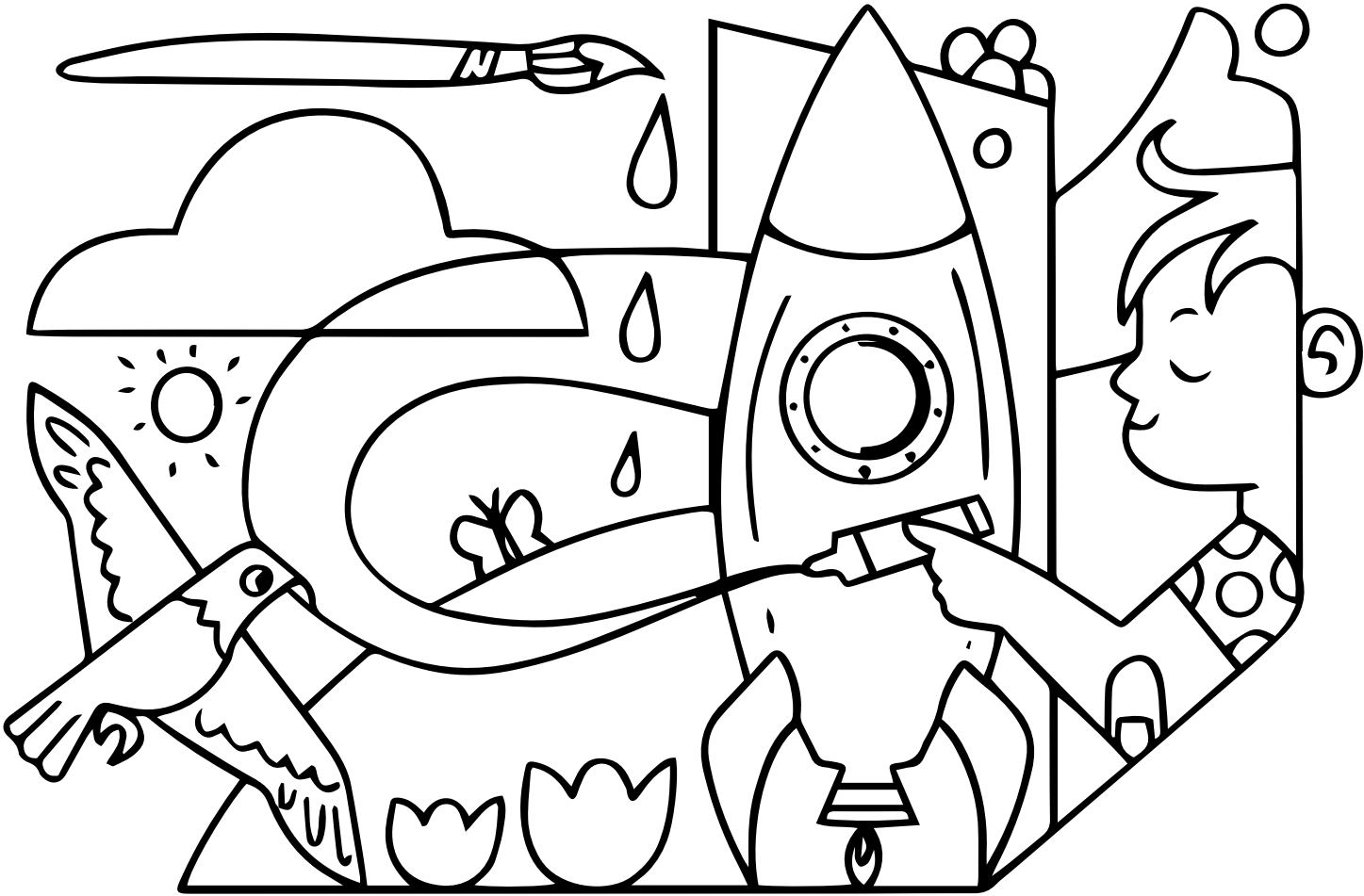
Digital Photography: Learn about composition, light, and narrative storytelling. The Center's cameras are shared among campers; please bring a flash drive to save your work.

PRINTMAKING

Exploring Printing: Learn new techniques like linocutting, monoprinting, and screenprinting to make unique multiples!

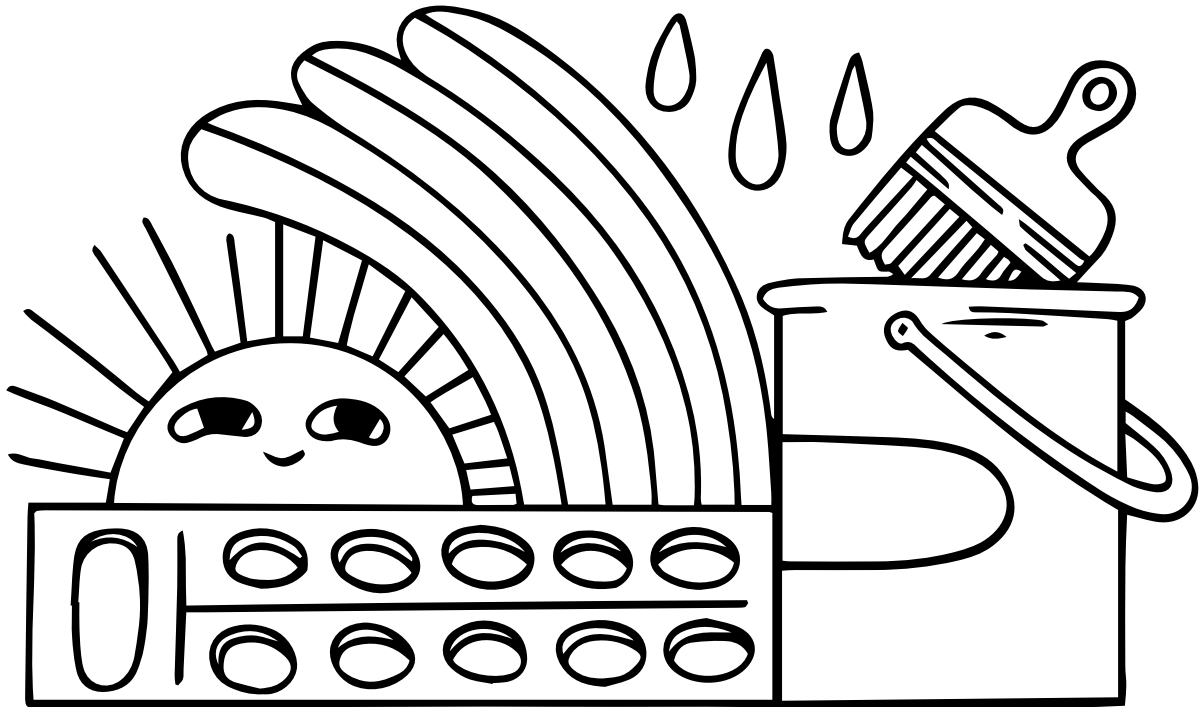
AGES 5-9 : PALETTE PALS

Session	Morning	Afternoon
A: 6/15 - 6/18 (4-DAY CAMP)	9 am - 12 pm	12:30 pm - 3:30 pm
B: 6/22 - 6/26	9 am - 12 pm	12:30 pm - 3:30 pm
C: 6/29 - 7/2 (4-DAY CAMP)	9 am - 12 pm	12:30 pm - 3:30 pm
D: 7/6 - 7/10	9 am - 12 pm	12:30 pm - 3:30 pm
E: 7/13 - 7/17	9 am - 12 pm	12:30 pm - 3:30 pm
F: 7/20 - 7/24	9 am - 12 pm	12:30 pm - 3:30 pm
G: 7/27 - 7/31	9 am - 12 pm	12:30 pm - 3:30 pm
H: 8/3 - 8/7	9 am - 12 pm	12:30 pm - 3:30 pm
I: 8/10 - 8/14	9 am - 12 pm	12:30 pm - 3:30 pm
J: 8/17 - 8/21	9 am - 12 pm	12:30 pm - 3:30 pm



PRICING FOR
PALETTE PALS

For full-day camp price, combine two half-day sessions.
All supplies are included.



CAMP

9 am - 12 pm **or** 12:30 pm - 3:30 pm

5-DAY CAMP

\$257 members / \$284 non-members

4-DAY CAMP (Weeks A and C only)

\$207 members / \$228 non-members

OPTIONAL AFTER CARE

3:30 pm - 5 pm

5-DAY CAMP

\$130

4-DAY CAMP (Weeks A and C only)

\$104

AGES 10-12 : PRE-TEEN STUDIOS

For **half-day camp**, choose one morning option **OR** one afternoon option
For a **full-day camp**, choose one morning option **AND** one afternoon option

Session	MORNING			AFTERNOON		
	OPT 1 Morning 1	OPT 2 Morning 2	OPT 3 Morning 3	OPT 1 Afternoon 1	OPT 2 Afternoon 2	OPT 3 Afternoon 3
A: 6/15 - 6/18 (4 DAY CAMP)	Drawing & Painting Intensive	Jewelry & Metals		Mosaics	Jewelry & Metals	
B: 6/22 - 6/26	Jewelry & Metals	Wheel-throwing Boot Camp		Jewelry & Metals	Glass Fusing	
C: 6/29 - 7/2 (4 DAY CAMP)	Sculpture Lab	Watercolor & More	Jewelry & Metals	Exploring Printing	Drawing & Painting Intensive	Jewelry & Metals
D: 7/6 - 7/10	Nature & Animal Illustration	Jewelry & Metals	Digital Photo	Glass Fusing	Wheel-throwing Boot Camp	Drawing & Painting Intensive
E: 7/13 - 7/17	Clay Sculpture	Drawing & Painting Intensive	Intro to Fibers	Jewelry & Metals	Digital Photo	Glass Fusing
F: 7/20 - 7/24	Jewelry & Metals	Sketch-books	Wheel-throwing Boot Camp	Sculpture Lab	Jewelry & Metals	Drawing & Painting Intensive
G: 7/27 - 7/31	Mosaics	Colored Pencils	Drawing & Painting Intensive	Wheel-throwing Boot Camp	Glass Fusing	Exploring Printing
H: 8/3 - 8/7	Drawing & Painting Intensive	Watercolor & More		Clay Sculpture	Portrait Drawing	
I: 8/10 - 8/14	Glass Fusing	Exploring Printing		Drawing & Painting Intensive	Wheel-throwing Boot Camp	
J: 8/17 - 8/21	Watercolor & More	Drawing & Painting Intensive		Sketch-books	Sculpture Lab	



PRICING FOR PRE-TEEN STUDIOS

For full-day camp price, combine two half-day sessions.
All supplies are included.

CAMP 9 am - 12 pm or 12:30 pm - 3:30 pm	OPTIONAL AFTER CARE 3:30 pm - 5 pm
5-DAY CAMP \$257 members / \$284 non-members	5-DAY CAMP \$130
4-DAY CAMP (Weeks A and C only) \$207 members / \$228 non-members	4-DAY CAMP (Weeks A and C only) \$104

AGES 13-16 : TEEN STUDIOS

Session	Morning	Afternoon
A: 6/15 - 6/18 (4 DAY CAMP)	Mosaics	Digital Photo
B: 6/22 - 6/26	Abstract Painting	Wheelthrowing Boot Camp
C: 6/29 - 7/2 (4 DAY CAMP)	Colored Pencils	Glass Fusing
D: 7/6 - 7/10	Clay Sculpture	Jewelry & Metals
E: 7/13 - 7/17	Jewelry & Metals	Wheelthrowing Boot Camp
F: 7/20 - 7/24	Drawing & Painting Intensive	Sculpture Lab
G: 7/27 - 7/31	Digital Photo	Figure Drawing
H: 8/3 - 8/7	Sketchbooks	Watercolor & More
I: 8/10 - 8/14	Portrait Drawing	Intro to Fibers
J: 8/17 - 8/21	Clay Sculpture	Glass Fusing



PRICING FOR
TEEN STUDIOS

For full-day camp price, combine two half-day sessions.
All supplies are included.



CAMP 9 am - 12 pm or 12:30 pm - 3:30 pm	OPTIONAL AFTER CARE 3:30 pm - 5 pm
5-DAY CAMP \$265 members / \$292 non-members	5-DAY CAMP \$130
4-DAY CAMP (Weeks A and C only) \$213 members / \$235 non-members	4-DAY CAMP (Weeks A and C only) \$104

TUITION REFUNDS

Withdrawals made **more than 2 weeks** prior to start of camp session will result in a full refund minus a \$50 fee. Refunds will not be given for withdrawals **made less than 2 weeks** prior to session. Based on availability, you may switch sessions for a fee of \$25. Deadline for requests is 2 weeks prior to the session you're currently registered for.

PLACEMENT REQUESTS FOR PALETTE PALS

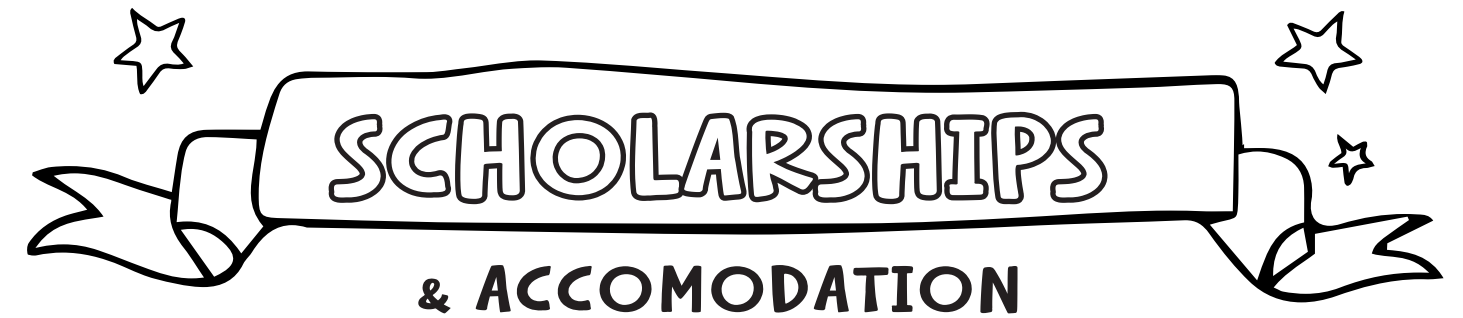
Your child may not automatically be placed with friends of a similar age unless you make a placement request by email 2 weeks prior to the start of the session. We cannot accommodate group placement requests. We will accept one placement request, per camper, per week. Requests must be emailed to the camp director at **campdirector@mainlineart.org**. Both families must agree to the request. We cannot accept placement requests by phone. We are not able to make placement requests less than two weeks ahead of camp or on the morning of camp drop-off. There will be no exceptions.

EMERGENCY CONTACT FORMS

Each camper is required to have a completed Emergency Contact form on file with the Art Center before the start of their camp week. Your camper will not be permitted to stay at camp without the completed form. Forms must be filled out and returned to the Art Center prior to the start of your camp week.

CAMP COMMUNICATION

Once you have completed your camp registration you will receive a confirmation to the email address you provided. After you've received your confirmation, you can expect to receive our camp handbook to that same email address in May 2025. We will also send confirmation emails ahead of each week of camp with reminders about emergency contact forms and Art Party info.



At Main Line Art Center our values lead us. We are committed to providing access to quality arts experiences no matter your age, race, ability, gender identity, or economic status. Please remember that although we do not ask for financial information, scholarships are reserved for those whom cost is a barrier to participation. The Art Center has limited scholarship funds available. To apply for a scholarship, visit **mainlineart.org/classes/summer-art-camp/** and click on the "Summer Camp Scholarship Form" at the top of the page.

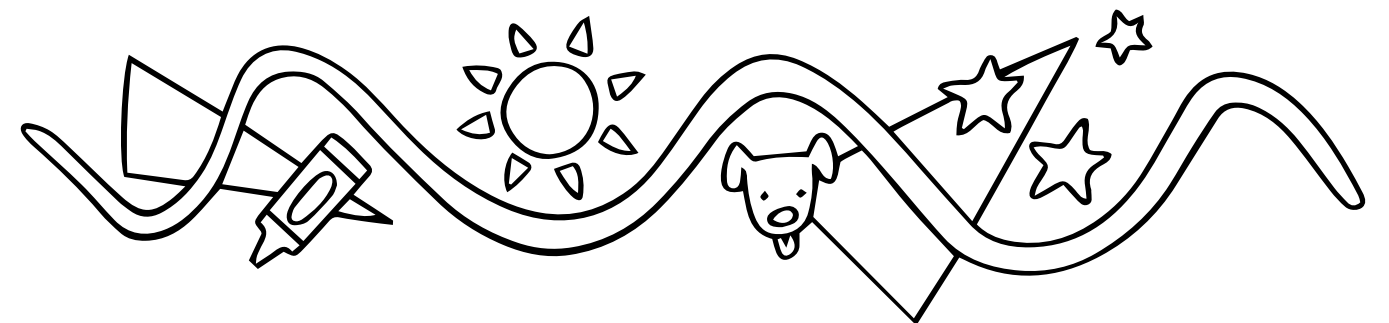
We strive to provide reasonable and appropriate accommodations in a supportive environment that fosters inclusion. If your child requires accommodations to participate meaningfully in our programs, please contact us one month prior to the start of your session at **info@mainlineart.org**.



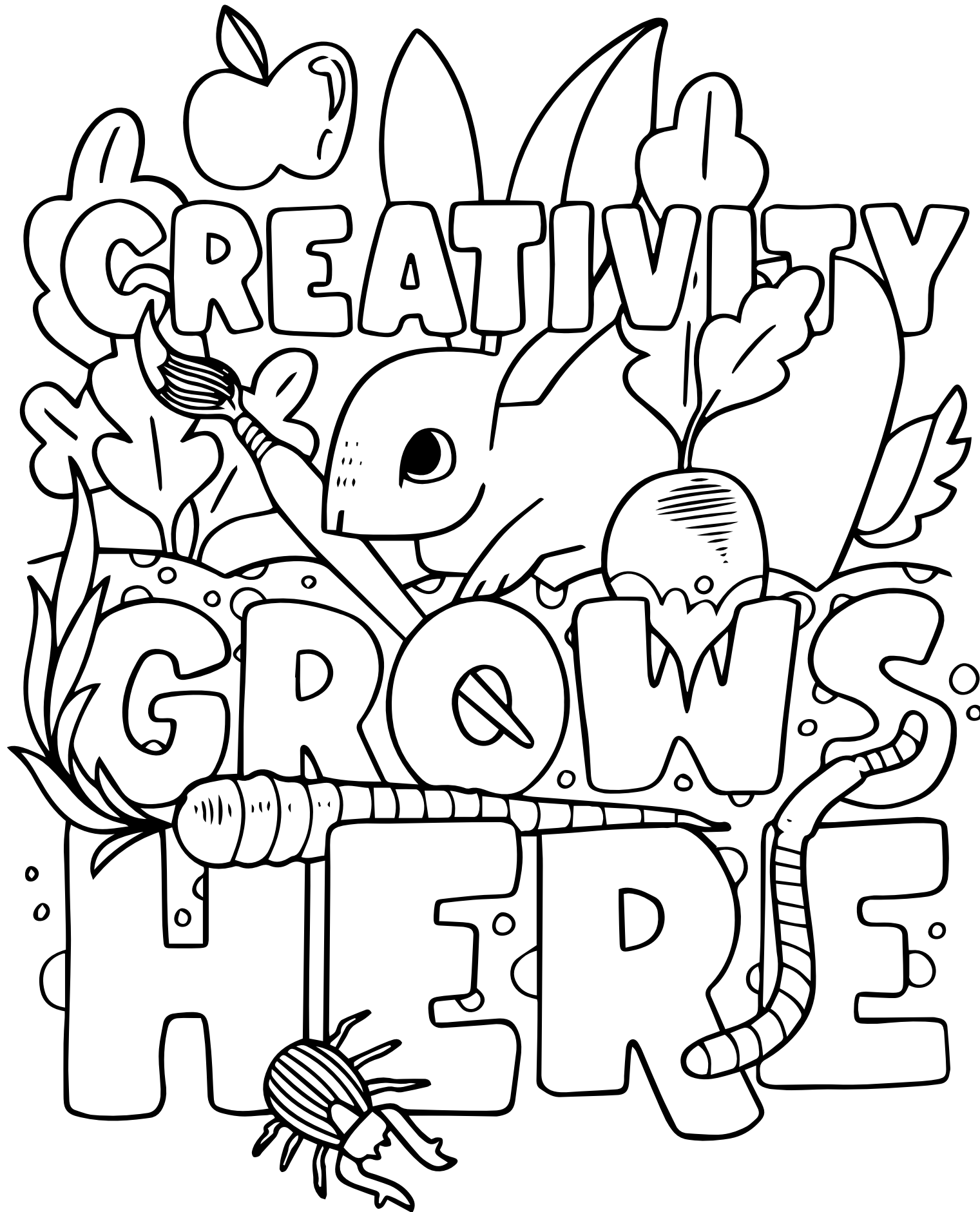
Full payment for Sessions A – F due by May 22

Full payment for Sessions G – J due by June 18

*After deadline, a \$25 late fee will be added to your balance.



Please visit our website **www.mainlineart.org** for a full list of camp registration & refund policies. Registration in camp is an acknowledgement that you agree to these policies.



Thank you
to our camp
sponsor!



BRYN MAWR TRUST

A WSFS COMPANY

bmt.com