



ART Main Line | ART CENTER

in Haverford



Summer Art Camp
Ages 5 - 16

June 17 - August 23 | One Week Sessions
Registration begins January 8th, 2024



Summer of color

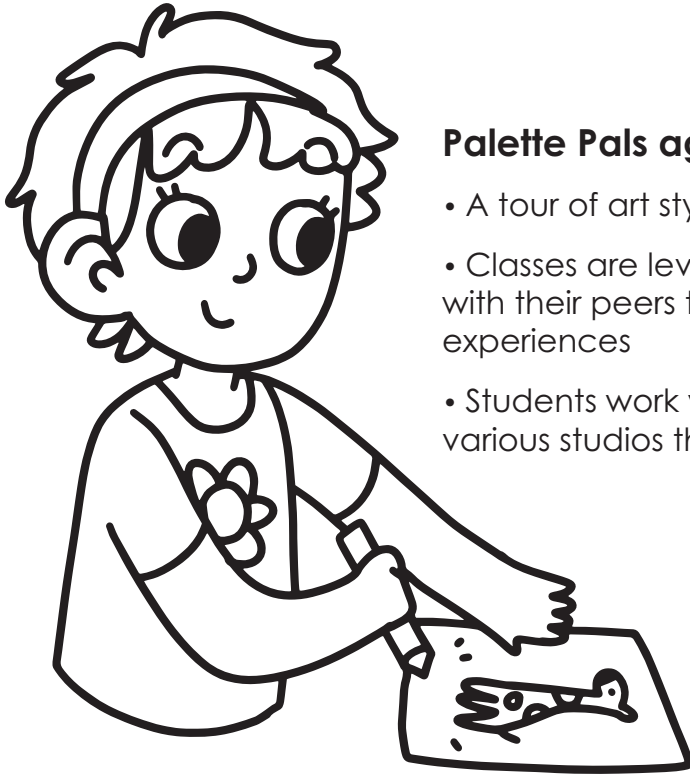
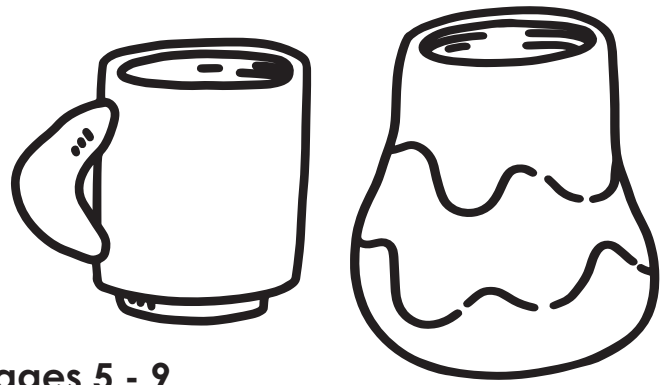
@ Camp Structure

Celebrate the summer with splashes of color!

Campers registered for multiple weeks can expect a variety of lessons with our experienced teaching artists, who bring their own creative flair to the classroom. Class sizes are small, and safety is our first priority. Pair morning and afternoon camps for a full day experience, or choose a half day camp. All campers must bring a snack; full day campers must also bring lunch. Students spend most of the day in our studios with breaks outside if weather permits. We end each Friday with an Art Party from 3-3:30 pm to celebrate your camper's creative accomplishments.

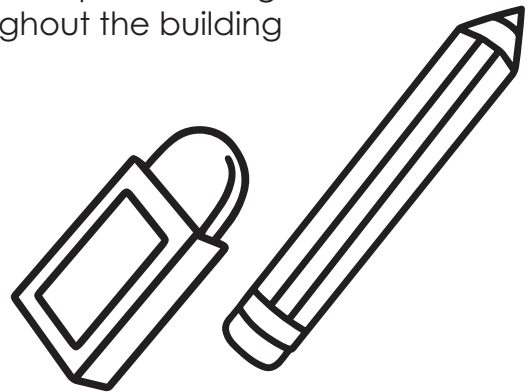
Join us this summer to make
colorful new memories!





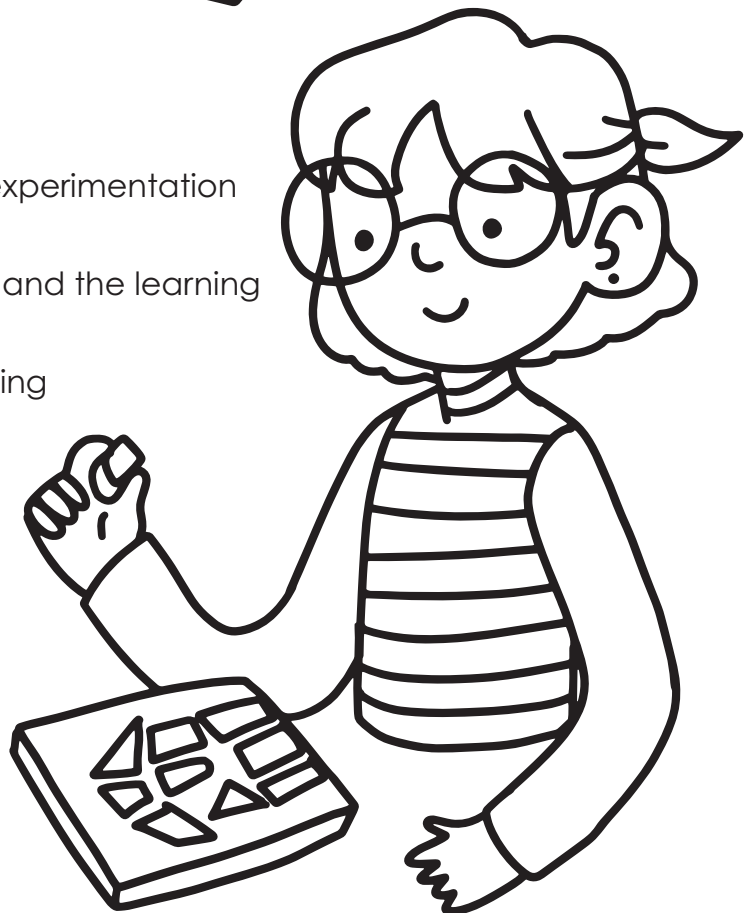
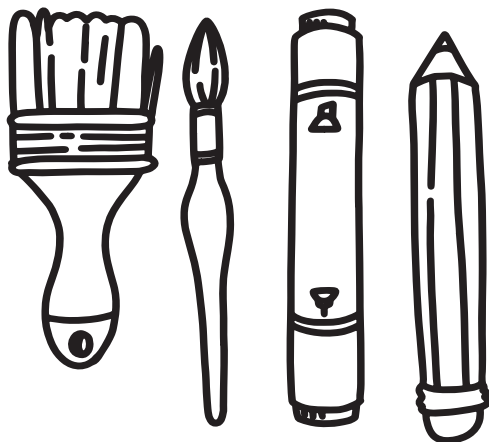
Palette Pals ages 5 - 9

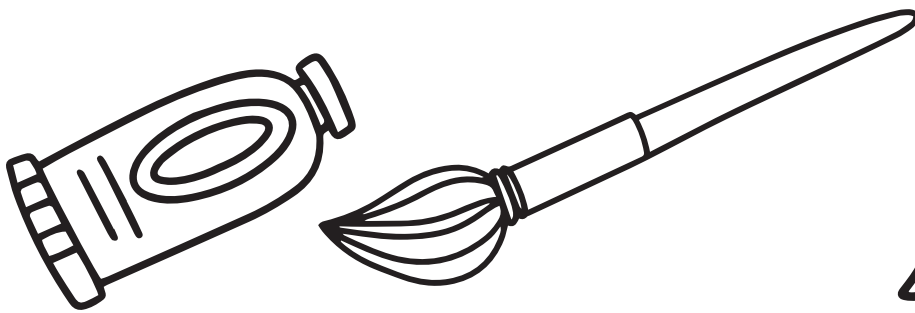
- A tour of art styles and mediums that focus on fun
- Classes are leveled by age so students engage with their peers through age appropriate art experiences
- Students work with multiple teaching artists in various studios throughout the building



Pre-Teen Studios ages 10 - 12

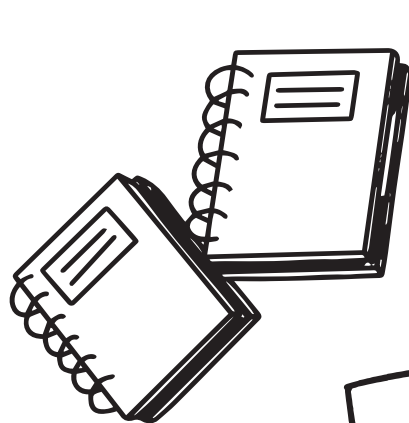
- Focused, in-depth learning and experimentation with a single medium
- Techniques are more advanced, and the learning is faster paced
- Students work with a single teaching artist in a dedicated studio





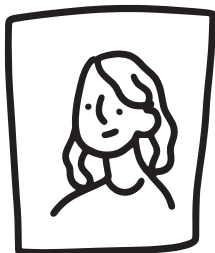
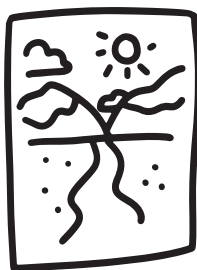
Teen Studios ages 13 -16

- Mastery of new techniques and unique studio topics
- Flexibility allows for student independence and experimentation
- Students work with a single teaching artist in a dedicated studio



It's Time Celebrate!

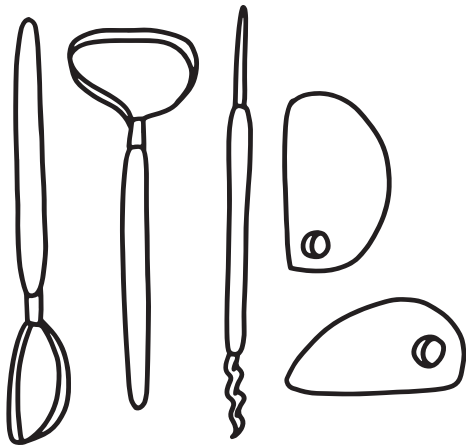
Each Friday we invite families and friends to celebrate their camper's artistic achievements! Our youngest campers, Palette Pals, will exhibit select artworks in our galleries. Pre-Teens and Teens will welcome you into their studios for a true open studio experience! You'll view their work and see all the supplies, tools, and equipment that helped shape their artistic journey. Join us on Fridays at 3pm!



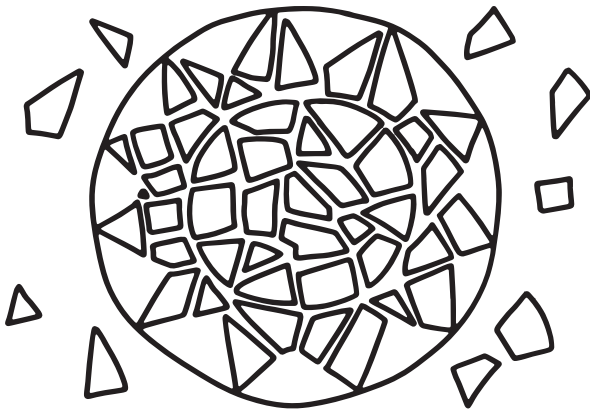
★ Pre-Teen & Teen ★ ★ Studio Descriptions ★

Ceramics & Sculpture

Wheel Throwing Boot Camp: Turn a ball of clay into art on the potter's wheel and master centering, throwing, and glazing!



Mosaics: Create intricate patterns and designs in stone, ceramic, glass, and found objects.



Sculpture Lab: Learn fundamentals of design and construction as you bring your 2-D designs to life using mixed techniques.

Drawing & Painting

Portrait Drawing: Explore proportion, form, gesture, and composition while using a variety of drawing and painting materials.

Sketchbooks: Capture ideas and images as you create a sketchbook using observational and gesture drawing, text, and collage.

Drawing & Painting Intensive: Explore traditional techniques in a variety of 2-D media while training your eye to work from observation.

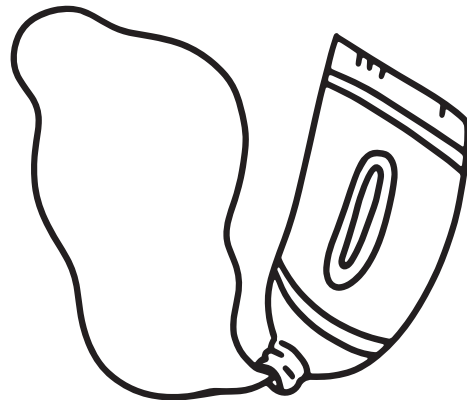
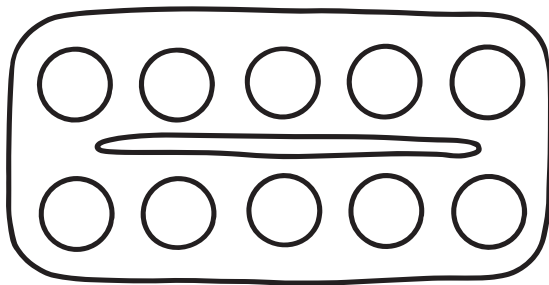


Figure Drawing: Explore proportion, form, gesture, and composition as you draw from both images and clothed models.

Watercolor & More: Explore the incredible world of watercolor, ink, or gouache while creating deep, layered artworks.



Colored Pencils: Test your drawing skills while introducing complex color and layering.

Learning from the Masters (Drawing & Painting): Revisit traditional techniques as you recreate classic artworks from the masters.

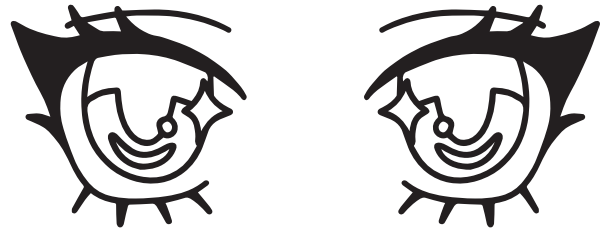


Nature & Wildlife Drawing & Painting: Celebrate your favorite flora and fauna as you develop your drawing skills and refine painting techniques.

Fashion Illustration & Exploration: Immerse yourself in the world of fashion illustration! Explore different styles and techniques while learning how to bring your fashion design ideas to life.

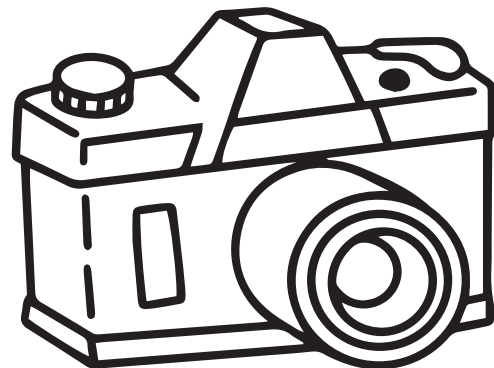
Comics, Manga, & Graphic Novels:

Draw mini-comics and create stories about topics you're passionate about while honing your drawing skills and learning about color and typography.



Photography

Digital Photography: Learn about composition, light, and narrative storytelling. The Center's cameras are shared among campers; please bring a flash drive to save your work.



Jewelry, Metals, & Glass

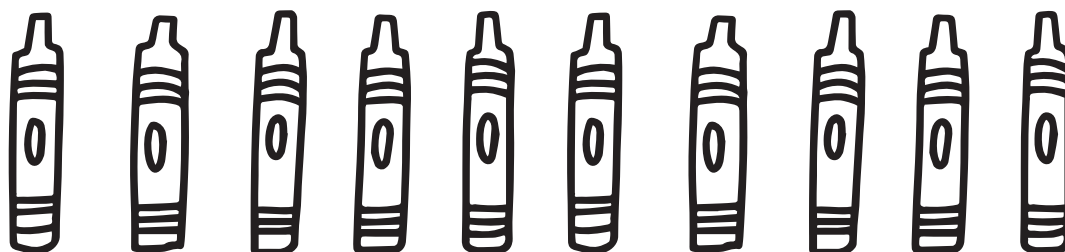
Jewelry & Metals: Saw, polish, stamp, and combine metals to create sculptural or wearable works of art.

Glass Fusing: Explore light, layering, and color as you learn to cut glass, compose designs, and create masterpieces.



Ages 5-9: Palette Pals

Session	Morning	Afternoon
A: 6/17 - 6/21 (no 6/19 - 4 day camp)	9:00 AM - 12:00 PM	12:30 PM - 3:30 PM
B: 6/24 - 6/28	9:00 AM - 12:00 PM	12:30 PM - 3:30 PM
C: 7/1 - 7/3 (3 day camp)	9:00 AM - 12:00 PM	12:30 PM - 3:30 PM
D: 7/8 - 7/12	9:00 AM - 12:00 PM	12:30 PM - 3:30 PM
E: 7/15 - 7/19	9:00 AM - 12:00 PM	12:30 PM - 3:30 PM
F: 7/22 - 7/26	9:00 AM - 12:00 PM	12:30 PM - 3:30 PM
G: 7/29 - 8/2	9:00 AM - 12:00 PM	12:30 PM - 3:30 PM
H: 8/5 - 8/9	9:00 AM - 12:00 PM	12:30 PM - 3:30 PM
I: 8/12 - 8/16	9:00 AM - 12:00 PM	12:30 PM - 3:30 PM
J: 8/19 - 8/23	9:00 AM - 12:00 PM	12:30 PM - 3:30 PM

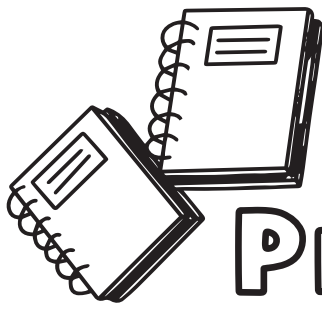




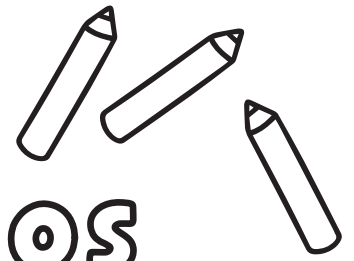
Pricing

For full day pricing combine two half day sessions. All supplies are included.

Camp 9:00 am - 12:00 PM or 12:30 - 3:30 PM	Optional After Care 3:30 - 5:00 PM
5 Day Camps: \$252 M / \$279 NM	5 Day Camps: \$130
4 Day Camp (Session A Only): \$202 M / \$223 NM	4 Day Camp (Session A Only): \$104
3 Day Camp (Session C Only): \$152 M / \$168 NM	3 Day Camp (Session C Only): \$78



Ages 10-12: Pre-Teen Studios



For **half** day camp choose one morning option **OR** one afternoon option.
For a **full** day camp choose one morning **AND** one afternoon.

Session	Morning 1	Morning 2	Afternoon 1	Afternoon 2
A: 6/17 - 6/21 (no 6/19 - 4 day camp)	Jewelry & Metals	Drawing & Painting Intensive	Sketchbooks	Digital Photography
B: 6/24 - 6/28	Portrait Drawing	Jewelry & Metals	Glass Fusing	Jewelry & Metals
C: 7/1 - 7/3 (3 day camp)	Digital Photography	Drawing & Painting Intensive	Glass Fusing	Jewelry & Metals
D: 7/8 - 7/12	Learning from the Masters: Drawing & Painting	Jewelry & Metals	Wheel Throwing Boot Camp	Jewelry & Metals
E: 7/15 - 7/19	Jewelry & Metals	Comics, Manga, & Graphic Novels	Portrait Drawing	Mosaics
F: 7/22 - 7/26	Wheel Throwing Boot Camp	Jewelry & Metals	Digital Photography	Jewelry & Metals
G: 7/29 - 8/2	Mosaics	Wheel Throwing Boot Camp	Drawing & Painting Intensive	Wheel Throwing Boot Camp
H: 8/5 - 8/9	Figure Drawing	Comics, Manga, & Graphic Novels	Wheel Throwing Boot Camp	Nature & Wildlife Drawing
I: 8/12 - 8/16	Drawing & Painting Intensive	Wheel Throwing Boot Camp	Digital Photography	Wheel Throwing Boot Camp
J: 8/19 - 8/23	Wheel Throwing Boot Camp	Watercolor & More	Sketchbooks	Drawing & Painting Intensive



Pricing

For full day pricing combine two half day sessions. All supplies are included.

Camp 9:00 am - 12:00 PM or 12:30 - 3:30 PM	Optional After Care 3:30 - 5:00 PM
5 Day Camps: \$252 M / \$279 NM	5 Day Camps: \$130
4 Day (Camp Session A Only): \$202 M / \$223 NM	4 Day Camp (Session A Only): \$104
3 Day (Camp Session C Only): \$152 M / \$168 NM	3 Day Camp (Session C Only): \$78

Ages 13-16: Teen Studios

Session	Morning	Afternoon
A: 6/17 - 6/21 (no 6/19 - 4 day camp)	Wheel Throwing Boot Camp	Jewelry & Metals
B: 6/24 - 6/28	Mosaics	Comics, Manga, & Graphic Novels
C: 7/1 - 7/3 (3 day camp)	Jewelry & Metals	Colored Pencils
D: 7/8 - 7/12	Wheel Throwing Boot Camp	Drawing & Painting Intensive
E: 7/15 - 7/19	Fashion Illustration & Exploration	Jewelry & Metals
F: 7/22 - 7/26	Sketchbooks	Wheel Throwing Boot Camp
G: 7/29 - 8/2	Watercolor & More	Glass Fusing
H: 8/5 - 8/9	Wheel Throwing Boot Camp	Sketchbooks
I: 8/12 - 8/16	Glass Fusing	Figure Drawing
J: 8/19 - 8/23	Digital Photography	Wheel Throwing Boot Camp



Pricing

For full day pricing combine two half day sessions. All supplies are included.

Camp 9:00 am - 12:00 PM or 12:30 - 3:30 PM	Optional After Care 3:30 - 5:00 PM
5 Day Camps: \$260 M / \$287 NM	5 Day Camps: \$130
4 Day Camp (Session A Only): \$208 M / 230 NM	4 Day Camp (Session A Only): \$104
3 Day Camp (Session C Only): \$156 M / \$178 NM	3 Day Camp (Session C Only): \$78

Thank you
to our camp
sponsor!



BRYN MAWR TRUST

A WSFS COMPANY

bmt.com

Tuition Refunds

Withdrawals made more than 2 weeks prior to start of camp session will result in a full refund minus a \$50 fee. Refunds will not be given for withdrawals made less than 2 weeks prior to session. Based on availability, you may switch sessions for a fee of \$25. Deadline for requests is 2 weeks prior to the session you're currently registered for.

Placement Requests for Palette Pals

Your child may not automatically be placed with friends of a similar age unless you make a placement request by email 2 weeks prior to the start of the session. Requests can be emailed to the camp director at campdirector@mainlineart.org. We cannot accept placement requests by phone. Both families must agree to the request. We are not able to make placement requests less than two weeks ahead of camp or on the morning of camp.

Emergency Contact Forms

Each camper is required to have a completed Emergency Contact form on file with the Art Center before the start of their camp week. Your camper will not be permitted to stay at camp without the completed form. Forms must be filled out and returned to the Art Center prior to the start of your camp week.

Scholarships & Accommodation

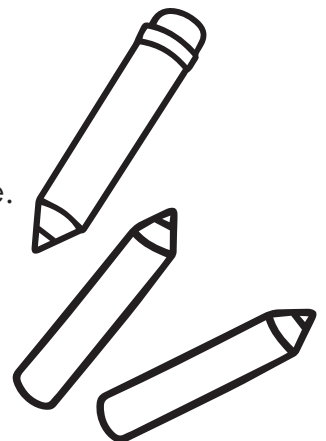
At Main Line Art Center our values lead us. We are committed to providing access to quality arts experiences no matter your age, race, ability, gender identity, or economic status. If cost is a barrier to participation in camps and studios please complete our one-page scholarship application and send by email to info@mainlineart.org or by mail/in-person to 746 Panmure Rd, Haverford, PA 19041.

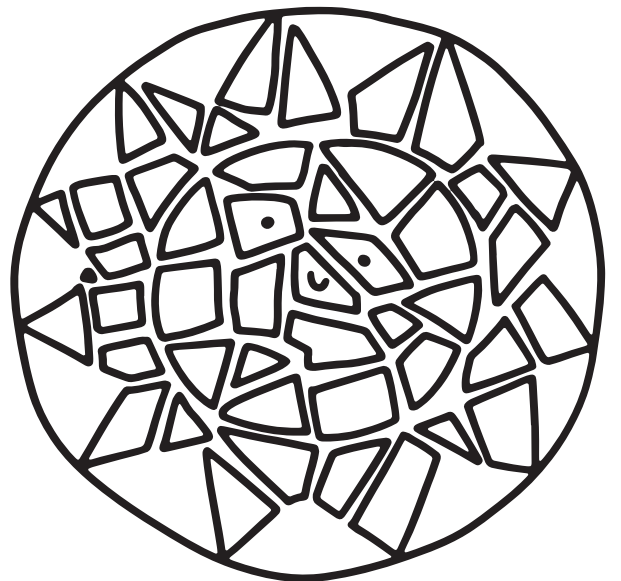
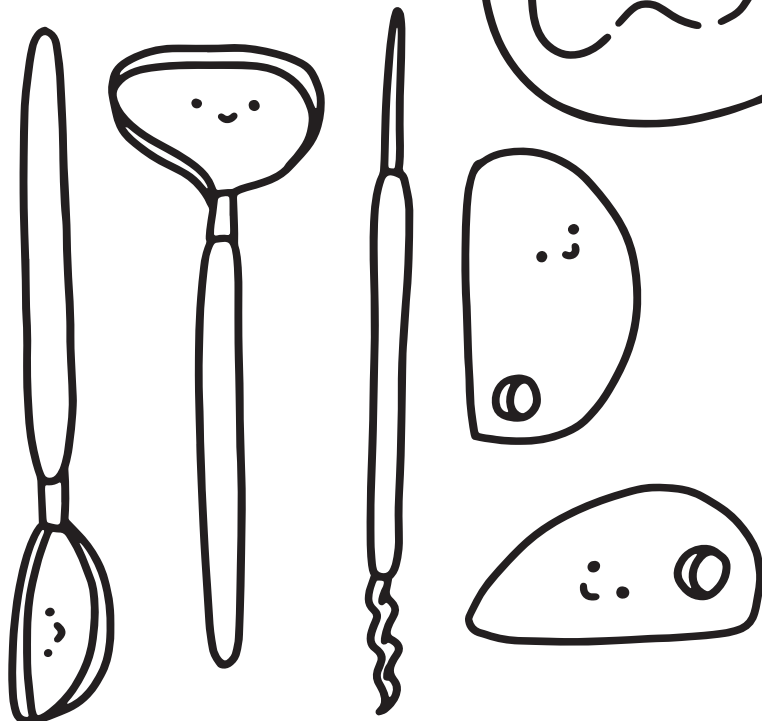
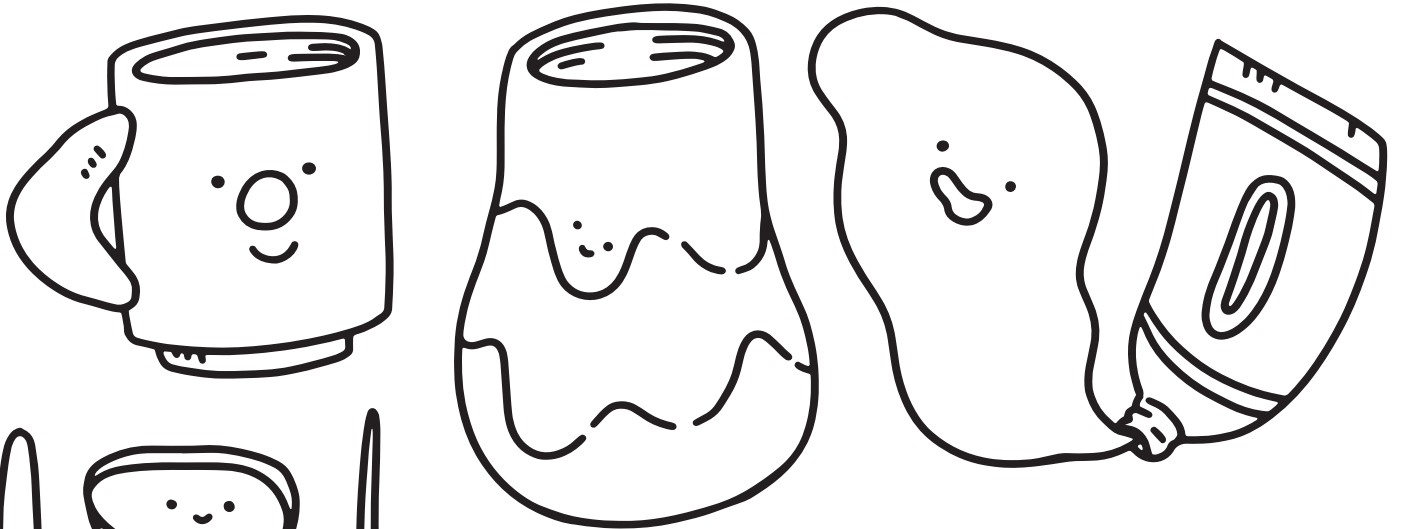
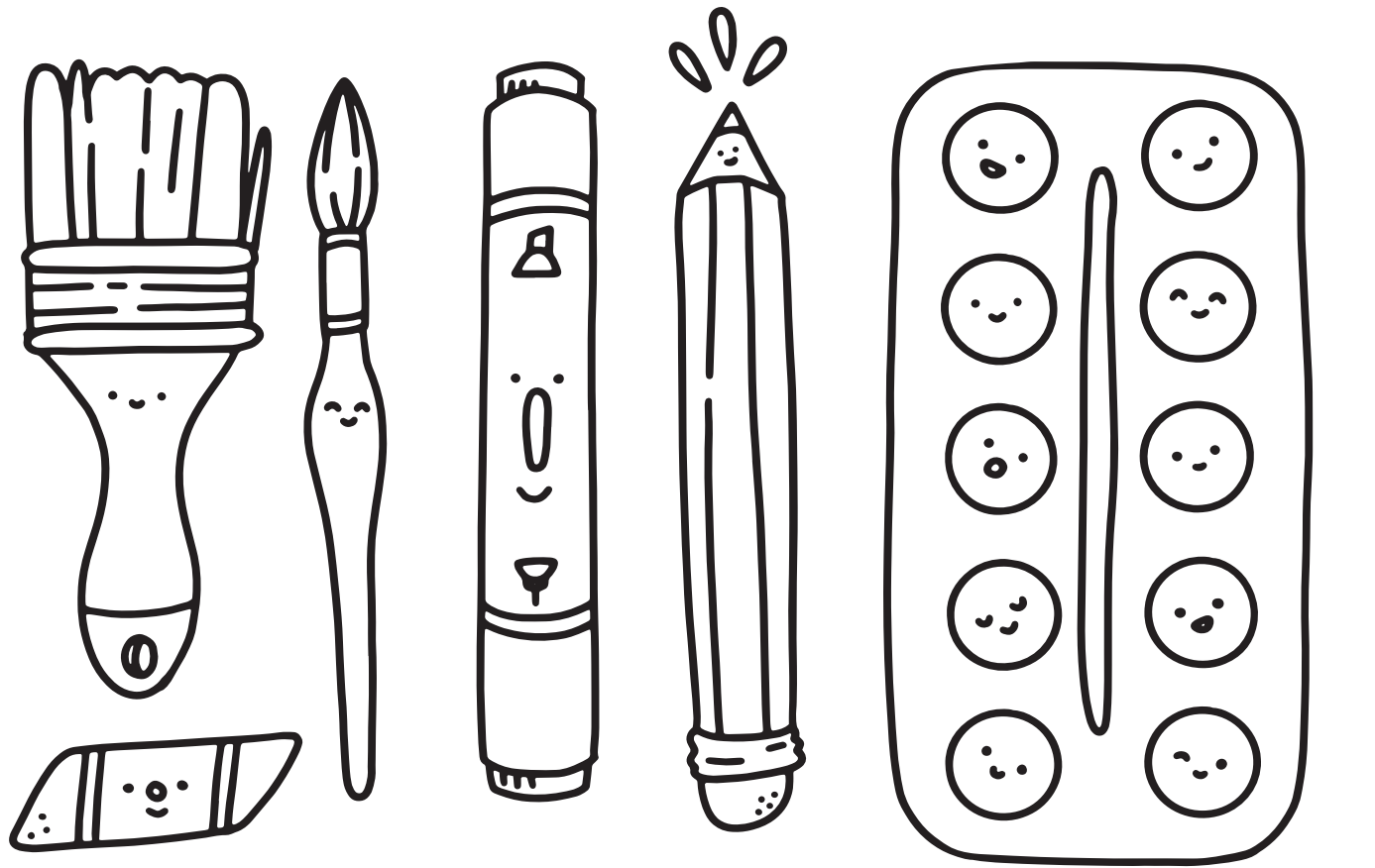
We strive to provide reasonable and appropriate accommodations in a supportive environment that fosters inclusion. If your child requires accommodations to participate meaningfully in our programs, please contact us one month prior to the start of your session at campdirector@mainlineart.org



- Full payment for Sessions A – F due by May 24
 - Full payment for Sessions G – J due by June 21
- *After deadline, \$25 late fee will be added to your balance.

Please visit our website mainlineart.org for a full list of camp registration & refund policies. Registration in camp is an acknowledgement that you agree to these policies.





Color Your Summer!

Use this page to draw and color a picture of your perfect summer day. Bring your picture to the Art Center so we can display it!



Main | ART CENTER
Line

746 Panmure Rd Haverford, PA 19041
www.mainlineart.org | 610.525.0272

Nonprofit Organization
U.S. Postage

PAID

Permit No. 35
Haverford, PA



Main | ART CENTER
Line

in Haverford

**I'm a
coloring
book!**

**A Summer
of Color!**

Summer Art Camp
Ages 5 - 16