



ART CENTER

CALL FOR ENTRIES

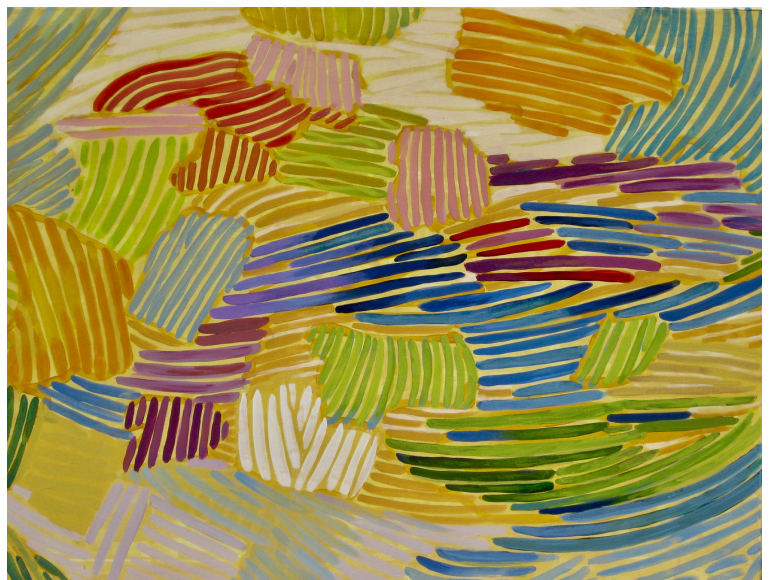
## 2019 Professional Artist Members Program & Exhibition January 5, 2019 – February 3, 2019

In celebration of our Members' support and creative energy, we are proud to present the 2019 Professional Artist Members Exhibition.

**APPLICATION DEADLINE:**

**October 9, 2018**

For questions & info: Paige Cherrington, Exhibitions Assistant  
610.525.0272 ext. 116 | [pcherrington@mainlineart.org](mailto:pcherrington@mainlineart.org)



# ABOUT THE PROGRAM

The Professional Artist Membership (PAM) celebrates, supports, and promotes a select group of MLAC Members to aid in furthering their artistic careers. The Professional Artist Membership provides a variety of exhibition, educational, and networking opportunities that enrich and support the artists, as well as expose them to collectors, curators, and designers.

## PAM PROGRAM ELIGIBILITY & REQUIREMENTS

Open to current (2018-2019) Professional Artist Members only (juried into program Fall of 2017. MLAC charges no fee to participate. Being accepted into the PAM program guarantees acceptance into the 2019 PAM exhibition.

The PAM program is a 2 year program and the next open application period for new PAM members will begin Summer of 2020.

## ELECTRONIC SUBMISSION

We are now accepting all submissions online via Slideroom. Apply online at <http://mainlineart.slideroom.com>. There is no application fee however; there is a \$5.00 processing fee for Slideroom.

Please submit up to 5 images (5MB or smaller), of artwork that would be available for the exhibition in January if selected. Artwork must have been created in the last 3 years and not previously shown at Main Line Art Center. We recommend that works be 30" x 30" or less, but larger scale works may be accepted at the discretion of the juror. All applications must be submitted electronically via <http://mainlineart.slideroom.com> by 11:59 pm, October 9 in order to be considered. We cannot accept paper applications. Work dropped off without prior registration to slideroom cannot be accepted, no exceptions. Please print off and save this prospectus for all important dates and details.

## JUROR

The Juror for the Exhibition is TBD.



For questions & info: Paige Cherrington, Exhibitions Assistant  
610.525.0272 ext. 116 | [pcherrington@mainlineart.org](mailto:pcherrington@mainlineart.org)

## DELIVERY, PICK UP, AND SALES

Hand deliveries of artwork only. Entries must be wired and ready to display. All pieces must be labeled using the form provided. Label should be securely fastened to the back of your piece. Pieces not picked up by February 5 will be charged a \$10 per day storage fee. The Art Center will retain 40% commission on all sales from its galleries.

## DATES

### Application Period:

July 27 2018 - October 9, 2018

### Exhibition Dates:

January 5, 2019 – February 3, 2019

### Exhibition Opening Reception:

January 11, 5:30-8:00pm

### Delivery Dates:

Dec. 18-20, 9am-4pm

### Pick Up:

Feb. 4-5, 10am-4pm

## ARTWORK LABEL

Fill out completely, then affix to back of artwork.

NAME

PHONE

ADDRESS

TITLE

MEDIUM

DIMENSIONS (H X W X D)

YEAR

PRICE