

CITY SUBURBAN NEWS

PHILADELPHIA & THE MAIN LINE'S FAVORITE WEEKLY

FREE

Year 32, No. 26

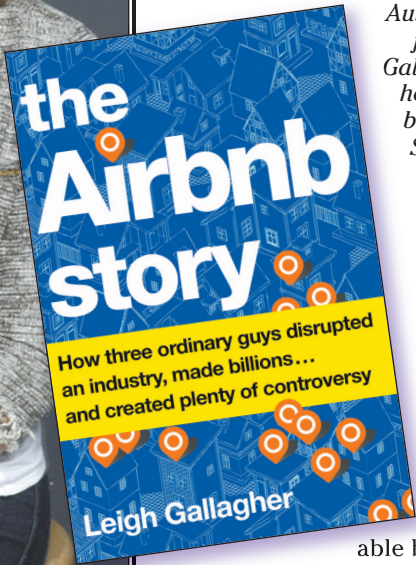
Celebrating 32 Years of Community News

March 1 – March 7, 2017

Meet Author Leigh Gallagher of "The Airbnb Story" at Main Point Books



Author and business journalist Leigh Gallagher will discuss her newly-released book, *The Airbnb Story: How Three Ordinary Guys Disrupted an Industry, Made Billions... and Created Plenty of Controversy*, at 6:30 p.m. Tuesday, **March 14**, at Main Point Books, 116 North Wayne Avenue, Wayne, PA. Originally from Media, PA, Gallagher is also the author of *The End of the Suburbs*, published in 2013.



Author and business journalist Leigh Gallagher will discuss her newly-released book, "The Airbnb Story: How Three Ordinary Guys Disrupted an Industry, Made Billions... and Created Plenty of Controversy," at 6:30 p.m. Tuesday, **March 14**, at Main Point Books, in Wayne, PA.

Her new book tells the remarkable behind-the-scenes

story of the creation and growth of the online lodging platform that has become, in under a decade, one of the largest providers of accommodations in the world. While neither owning nor controlling any of the inventory it offers, Airbnb instead invites everyday people to profit from their personal space and gives travelers a unique and affordable way to see the world—whether that's a treehouse, a castle, or just a studio apartment in a residential part of town. Now valued at \$30 billion, the privately held company, started by three unemployed college grad-

See *Meet Author of "The Airbnb Story"* on page 4

"Draw the Line" Features Colossal Drawings Addressing the Refugee Experience

Artist Talks & Opening Reception: Friday, March 10



Photo/Amie Potsic 2017

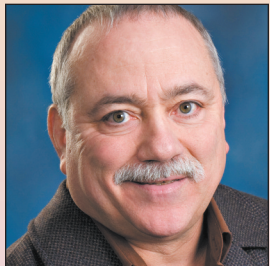
Paul DiFuria Santoleri is a muralist based in Philadelphia whose drawing installations and wall-sized paintings can be found in city streets around the world including Philadelphia, Paris, Copenhagen, and Helsinki.

Main Line Art Center in Haverford presents Kelley Donahue (Brooklyn, NY), Joanna Platt (Philadelphia, PA) and Paul Santoleri (Philadelphia, PA) as the 2017 recipients of the Meyer Family Award for Contemporary Art. Selected by Members of Main Line Art Center's Board of Artistic Advisors and Executive Director through a highly competitive application process, Donahue, Platt, and Santoleri will be featured in "Draw the Line," the 13th Annual Betsy Meyer Memorial Exhibition, on view at Main Line Art Center **March 6 to April 16**. The Art Center will host artist talks Friday, **March 10**. See "Draw the Line" Exhibit at Main Line Art Center on page 8

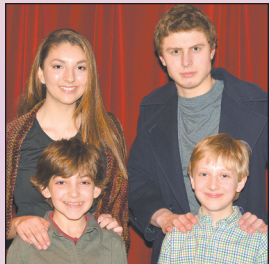
FIND YOUR COMMUNITY NEWS HERE!



PA Ballet's "Le Corsaire" Page 3



Dining & Entertainment Page 5



"Oliver!" at The Haverford School Page 7

Education News Pages 6, 7 & 11

Find Great Upcoming Events to Attend!

CITY SUBURBAN NEWS
610-667-6623
www.issuu.com/
CitySuburbanNews
LIKE us on Facebook!

CitySuburbanNews@mac.com

Friends' Central Presents the Lively, Magical Musical Pippin

Friends' Central's outstanding Upper School Drama Program will present the musical *Pippin* on Friday, **March 3** at 7 p.m. and Saturday, **March 4** at 2 p.m. and 7 p.m. in Shallcross Hall. Terry Guerin, Drama Director, welcomes audiences of all ages saying, "Come 'join us' while we help Pippin find his 'corner of the sky' through song and dance. With a lively score by Stephen Schwartz, the musical *Pippin* has been delighting audiences since Bob Fosse directed the original production in 1974. Upper School singers and actors have some 'magic to do, just for you.'"

A Tony Award-winning musical, *Pippin* follows a mysterious performance troupe, led by a Leading Player, to tell the story of a young prince, Pippin, on his search for the real meaning of life. Alex Bessen, who plays Pippin, says that the premise mirrors what he and his classmates are currently experiencing. He says, "Pippin is looking for real significance, meaning, and direction of his life, and that's what many of us in the senior class are also doing. We're search-



ing forward this all means and what the next steps are for each of us."

Friends' Central presents the musical "Pippin" on **March 3** at 7 p.m. and **March 4** at 2 p.m. and 7 p.m. Cast members include – front, from left – Benny Flora of Haverford, Zoe Walker of Radnor, Noelle Mercer of Philadelphia, Alex Bessen of Philadelphia, Saleana Copeland of Philadelphia; back, from left – Matt Blackman of Wynnewood, Julian Shapiro-Barnum of Philadelphia, and Ciara Hervas of Wynnewood.

Noelle Mercer, who plays the Lead Player, shares, "Audiences can expect an exciting show,

full of magic, that ends with a bang." Stage manager Annie Roberts urges audiences to attend this show. "It's one of the last opportunities to hear some powerhouse voices, Noelle Mercer, Alex Bessen, and many more amazing graduating seniors," Roberts says.

See "Pippin" at Friends' Central School page 4