



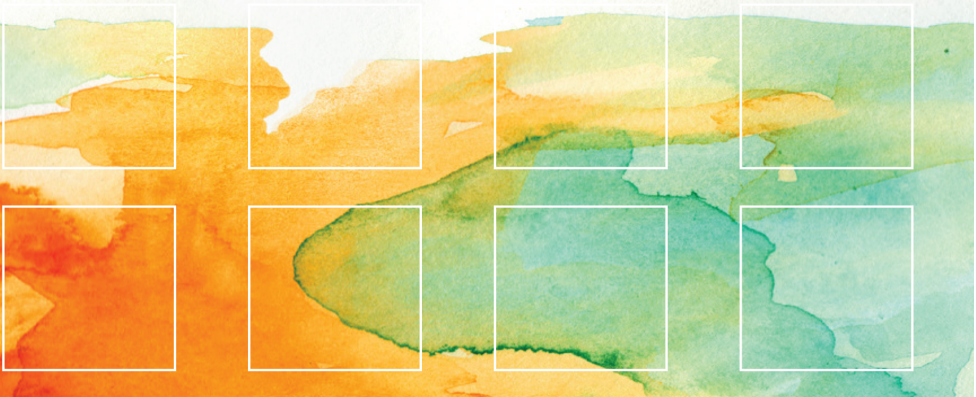
FLIP SIDE

Community Exhibition ■ Fundraiser

PREVIEW PARTY: NOV. 10, 2016, 6-8:30 PM

JOIN US ON THE FLIPSIDE

We invite you to be a part of our FLIP SIDE Community Exhibition Fundraiser *Preview Party*, a night to celebrate and attain affordable art, party and enjoy music, while tasting the best drinks and cuisine the area has to offer. As a participant you will provide guests with a sampling of your products while promoting your business. A diverse crowd of 100-150 art enthusiasts is expected to attend the *Preview Party* and be a part of this amazing event.



Your participation will be **SHOUTED OUT!!**

We will include your business in our promotional material: digital, social media, print, and on-site branding of your business – including logo placement and mentions – on communications and press releases leading up to the event. You will be provided with a space to set up, display, serve and promote your goods. There is no cost to participate in this event.

Have at least one staff member present at your table, serving guests for the duration of the event (6-8:30 pm)

WHERE
Main Line Art Center
746 Panmure Road,
Haverford, PA 19041

WHEN
Thursday
November 10,
2016
6-8:30 pm

WHO
We anticipate
between
100-150 guests

FLIP SIDE

Community Exhibition ■ Fundraiser

PREVIEW PARTY: NOV 10, 2016, 6-8:30 PM

JOIN US

CONFIRM YOUR PARTICIPATION!

with Nan Latona at
610-525-0272 Ext.113;
cell: 267-872-6118; or
nlatona@mainlineart.org



ABOUT

The Flip Side Community Exhibition Fundraiser Preview Party will introduce guests to a small art spectacle with real super powers! Flip Side features hundreds of 8" x 8" works of art made and donated by emerging and established artists, local notables, college students, children, and the general public, and will benefit the important work that Main Line Art Center does in Greater Philadelphia: from our robust scholarship program, to our life-changing Accessible Art Programs for people with disabilities.

DETAILS

- Main Line Art Center is located just off Lancaster Avenue, behind the Wilkie Lexus dealership at 746 Panmure Rd. Haverford, PA 19041
- Load in and set up is available from 2-4 pm and from 5-5:45 pm. The Preview Party starts promptly at 6 pm. Any display set up between 2-4 pm must be covered or concealed.
- You will be provided with a 6' table, two chairs, and a table top placard with your business name.
- Please provide all that you need to facilitate the sampling of your product(s)- such as table coverings, décor, serving pieces, utensils, plates, bowls, cups, napkins, a small trash receptacle for behind your table, etc. We anticipate 100-150 guests.
- Main Line Art Center has very limited access to an oven or refrigerator.
- Load out can begin once the event is over, at 8:30 pm
- Trash can be disposed of in the Art Center's dumpster.

Main Line Art Center is a non-profit 501(c)(3) organization