



746 Panmure Road
Haverford, PA 19041
610.525.0272
www.mainlineart.org

FOR IMMEDIATE RELEASE

CONTACT: Rachel Ammon, Communications Dir. | 610.525.0272 x125 | rammon@mainlineart.org

**SOMETHING OLD. SOMETHING NEW.
NEVER BORROWED. SOMETIMES BLUE.**



PHYLLIS STEINBERG

June 17 – August 22, 2016

Artist Phyllis Steinberg Brings Color and Vibrancy to Main Line Art Center for Solo Show This Summer

Something Old. Something New. Never Borrowed. Sometimes Blue.
June 17-August 22, 2016

HAVERFORD, PA (May 17, 2016)—From bold flowers and landscapes to vibrant portraits, painter Phyllis Steinberg is bringing her colorful artwork to the gallery walls of Main Line Art Center in Haverford this summer. Steinberg's solo exhibition, *Something Old. Something New. Never Borrowed. Sometimes Blue.*, will be on view from June 17 to August 22, 2016 as part of Main Line Art Center's Summer Gallery Rental Series. An

opening reception will be held on Friday, June 17 from 6 to 8 pm.

Steinberg's solo exhibition will feature over 30 acrylic paintings on canvas, as well as framed and unframed matted giclee prints available for purchase. While her work is rooted in reality, her goal is not to replicate what she sees.

"My art is about viewing the world in a way that gives attention to the details," says Steinberg. "Although my artworks always begin in reality, it is not my intention to duplicate it. My goal is to transform it into a well-designed, intricate new reality, where the painting takes on a life of its own."

While she favors vibrant colors, Steinberg seeks to infuse her works with an air of mystery.

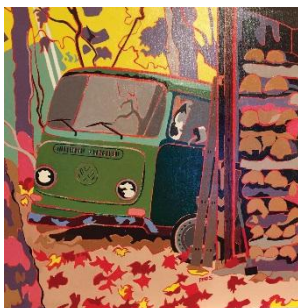
"Although the colors used are usually vibrant, I always have a sense of the darkness and mystery that lies beneath the superficial brightness," says Steinberg. "For example, an orchid will wither and die, but it is beautiful, a jewel of infinity, while it blooms."

A resident of Penn Valley, Steinberg received her BFA from Temple University's Tyler School of Art and also completed post-graduate work at Temple University and Cabrini College. Steinberg also holds a teaching certificate in art education and has over 30 years of experience teaching in the Lower Merion and Philadelphia School Districts. She continues her painting studies at Main Line Art Center (Haverford, PA) and Woodmere Art Museum (Philadelphia, PA). Steinberg's artwork is included in many corporate and private collections and has been exhibited widely in venues like Muse Gallery (Philadelphia, PA), The Gallery at St. Asaph's Church (Bala Cynwyd, PA), and The Lucy Gallery (Margate, NJ). In 2006, Steinberg's artwork was featured in the Disney Motion Picture *Invincible*.

Main Line Art Center is located at 746 Panmure Road in Haverford, behind the Wilkie Lexus dealership just off of Lancaster Avenue. The Art Center is easily accessible from public transportation and offers abundant free parking. For more information about *Something Old. Something New. Never Borrowed. Sometimes Blue.*, please visit www.mainlineart.org or call 610.525.0272.

#

Images are attached to this email and are available upon request.



Phyllis Steinberg
Abandoned VW Bus in Port Matilda Pennsylvania
20" x 20"
Acrylic on canvas



Phyllis Steinberg
Sometimes Blue
20" x 20"
Acrylic on canvas



Phyllis Steinberg
Orchid Burst
12" x 16"
Acrylic on canvas