

CALL FOR ENTRIES



Professional Artist Members Exhibition

Celebrating, Supporting and Promoting our talented Professional Artist Members.

**2017 PAM Exhibition:
January 13 - February 11, 2017**



Main Line Art Center

746 Panmure Road
Haverford, PA 19041

Non-Profit
Organization
U.S. Postage
PAID
Permit No. 35
Havertown, PA

Enjoy the art of saving ...

For as little as \$50, enjoy year-round benefits like up to 25% savings on classes and lectures, discounts at local art supply stores, and more. Plus you'll be making the statement that the arts matter to you, which ups your cool-factor.



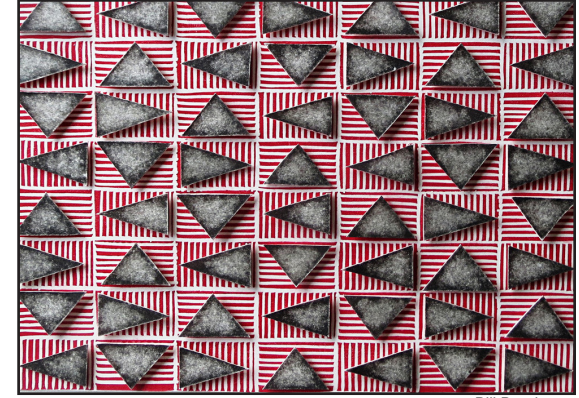
PROSPECTUS

2017 Professional Artist Members Exhibition

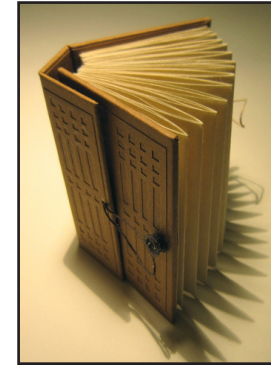
Prospectus: www.mainlineart.org

Application: <http://mainlineart.slideroom.com>

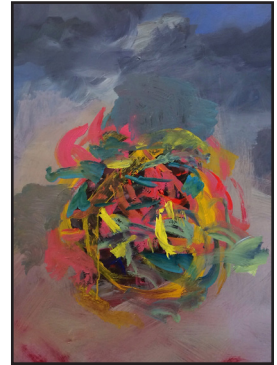
Contact: Beth Boardman, Exhibition Coordinator,
bboardman@mainlineart.org, 610-525-0272 x116



Bill Brookover



Sun Young Kang



Kate Stewart



Gary Grissom

Main Line Art Center

2016 Professional Artist Members Program and Exhibition

PAM Program: 2 year membership: 2016 - 2017

PAM Exhibition: January 13 - February 11, 2017

Exhibition Opening Reception:

Friday, January 13, 2017; 5:30-7:30 pm

About the Program:

The Professional Artist Membership (PAM) celebrates, supports, and promotes a select group of MLAC Members to aid in furthering their artistic careers. The Professional Artist Membership provides a variety of exhibition, educational, and networking opportunities that enrich and support the artists, as well as expose them to collectors, curators, and designers.

Electronic Submission

We are now accepting all submissions online via Slideroom. Apply online at <http://mainlineart.slideroom.com>. There is no application fee however; there is a \$5.00 processing fee for Slideroom.

Please submit up to 4 images (5MB or smaller), of artwork that would be available for the exhibition in January **if** selected. Artwork must have been created in the last 3 years and not previously shown at Main Line Art Center. All entries must be submitted electronically via <http://mainlineart.slideroom.com> by 11:59 pm, November 1 to be accepted into the exhibition. We cannot accept paper applications. Work dropped off without prior registration to slideroom cannot be accepted, no exceptions. Please print off and save this prospectus for all important dates and details.

Eligibility

Open to current (2016-17) Professional Artist Members only (juried into program Fall of 2015). MLAC charges no fee to participate. This exhibition is a juried show, and participation in this exhibit is at the discretion of the juror. Being a PAM is not a guarantee of being accepted for this exhibition.

The PAM program is a 2 year program and the next open application period for new PAM members will begin Summer of 2017.

CALENDAR

Application Deadline

Tuesday, November 1, 2016

Exhibition Dates

January 13 - February 11, 2017

Delivery Dates

Sunday, January 8

9 am - 4 pm

or Monday, January 9

9 am - 9 pm

Pick Up

Sunday, February 12

9 am - 4 pm

Monday, February 13

9 am - 9 pm

Opening Reception

Friday, January 13, 2017

5:30 - 7:30 pm

ARTWORK LABEL

Fill out completely, then affix to the back side of artwork.

NAME

ADDRESS

PHONE

TITLE

MEDIUM

DIMENSIONS (H" X W" X D")

YEAR

PRICE

Application Process

Apply online at <http://mainlineart.slideroom.com>. There is no application fee however; there is a \$5.00 processing fee for Slideroom. All entries must be submitted electronically on Slideroom by 11:59 pm, November 1, 2016. No exceptions or paper applications will be accepted.

Please submit 4 images (5MB or smaller) of artwork that has been created in the last 3 years and not previously shown at Main Line Art Center. Please only submit images of artwork that will be available for the exhibition in January 2017 **if** selected. All entries must be submitted electronically via <http://mainlineart.slideroom.com> by 11:59 PM, November 1 to be accepted into the 2017 PAM Exhibition.

Juror: Ross Lance Mitchell, Director of Barnes-de Mazia Education and Outreach Programs for the Barnes Foundation in Philadelphia. Mitchell previously served as the Gallery Director. He is the former Executive Director of the Violette de Mazia Foundation whose mission was to teach aesthetics and art appreciation. Mitchell started his career as a painter and studied at the Barnes Foundation in Merion, PA with Violette de Mazia. He has served as Executive Director of Historic Laurel Hill Cemetery in Philadelphia where he repositioned the cemetery as a heritage tourism destination. Mitchell was also Senior Associate for VIART Corporation, a Manhattan based art-consulting firm.

Delivery and Pick Up

Artwork selected for the exhibition must be delivered on Sunday, January 8 or Monday, January 9. Entries must be wired and ready to display with completed entry form.

All pieces must be labeled using the form provided. Label should be securely fastened to the back of your piece. Pieces not picked up by February 13, 2017 are subject to a \$10 per day storage fee.

Sales and Liability

The Art Center will retain 40% commission on all sales from its galleries.

For questions or more information email:

Beth Boardman, Exhibition Coordinator

bboardman@mainlineart.org