

PANORAMA

MAIN LINE ART CENTER | 2016

September 10 - November 5



MUST-DO PROGRAM GUIDE

CELEBRATING IMAGE-BASED ART IN THE 21ST CENTURY

40+ Partners | 50+ Events | 2 Months

WWW.MAINLINEART.ORG/PANORAMA2016 | 746 PANMURE RD, HAVERFORD, PA | #PANORAMA2015

ABOUT PANORAMA

September 10 – November 5, 2016

Panorama: Image-Based Art in the 21st Century is a celebration of the photographic image and digital media and their expansive roles in contemporary mediums like digital photography, printmaking, video, film, animation, and gaming design. Produced by Main Line Art Center in Haverford, Panorama 2016 is anchored by the feature exhibition *Enlightened Earth* in Main Line Art Center's galleries and a dynamic and interactive Festival, and features physical and virtual exhibitions, film screenings, special events, lectures, and educational programs presented by Main Line Art Center and our Creative Partners across the Greater Philadelphia area.

#PANORAMA2016

Presenting Organization

Main Line Art Center | 746 Panmure Road, Haverford, PA 19041

www.mainlineart.org | 610.525.0272

Creative Partners

3rd Street Gallery | Allen's Lane Art Center | ArtsQuest | Big Bright Monster | Bryn Mawr Film Institute | Center for Emerging Visual Artists | Cheltenham Center for the Arts | Da Vinci Art Alliance | The Delaware Contemporary FringeArts | Gravers Lane Gallery
The Galleries at Moore College of Art | Haverford College: Cantor Fitzgerald Gallery
InLiquid Art & Design | Institute of Contemporary Art (ICA) | Media Arts Council
Painted Bride Art Center | Perkins Center for the Arts Philadelphia's Art in City Hall
The Photo Review | The Print Center | Rowan University Art Gallery | Twelve Gates Arts
University of the Arts: Gallery 1401, Rosenwald-Wolf Gallery, and Sol Mednick Gallery
Vox Populi | WP Gallery

Green Partners

Appleford | Awbury Arboretum | Bucks County Community College - Tyler Formal Gardens | Chanticleer | Hagley Museum and Library | Haverford College Arboretum
Historic Fair Hill | Morris Arboretum of the University of Pennsylvania | Natural Lands Trust - Saunders Woods Preserve | Smith Memorial Playground & Playhouse | Tyler Arboretum
Wyck Historic House, Garden, and Farm

Educational Partners

Antonelli Institute | Haverford College | Moore College of Art | Rowan University
The University of the Arts



www.mainlineart.org | 746 Panmure Road Haverford, PA 19041 | 610.525.0272

Business Partners



EVENTS | MAIN LINE ART CENTER



Ultima Part 1: Path of the Ancients © Nick Pedersen 2013

Featured Exhibition: *Enlightened Earth*

September 10 – November 6, 2016 | #ENLIGHTENEDEARTH

Artist Talk & Opening Reception: Friday, Sept. 16, 5:30-8:30 pm | FREE

Enlightened Earth presents works by **Mark Dorf** (New York), **Julianna Foster** (Philadelphia), and **Nick Pedersen** (Burlington, NJ) that engage the photographic medium and digital media to explore nature and our complex relationship to its past, present, and future. Motivated by environmentalism, fascination with photography's subjectivity, and our dominance of the digital domain, these artists investigate the delicate imbalance of nature, technology, and humanity. Their work leads us down a path of multi-layered, multi-media discovery through storytelling, scientific research, and fantastical landscapes.





© Leah Macdonald 2015

Featured Event: *Panorama* Festival & Digital Art Presentation **Saturday, October 22, 5-9 pm | FREE | #PANORAMAFESTIVAL2016**

Virtual and hands-on collide at this dynamic and interactive all-ages festival featuring innovative art-making, unforgettable art experiences, digital demos, food trucks, fire-spinning, a DJ, and more! **Leo Hylan**, Main Line Art Center's 2016 Digital Artist in Residence, lights up the night as the Art Center's historic façade becomes his canvas for digital projections.

Additional Events Presented by Main Line Art Center

All events take place at Main Line Art Center unless otherwise noted

- **Panorama 2016 Welcome Gallery Exhibition: Bill Hoo:** Sat., Sept. 10-Wed., Nov. 2
- **Film Screening: *Watermark* by Edward Burtynsky at Bryn Mawr Film Institute:** Wed., Sept. 28, 7-9 pm | \$10 | Register at www.mainlineart.org
- **Panorama: *Image Based Art in the 21st Century* Exhibition at Philadelphia City Hall:** Mon., Oct. 10-Fri., Dec. 2, 2016
- **Portfolio Reviews by MLAC Artistic Advisors:** Sat., Oct. 22, 1-4 pm | \$95 | Register to have your work reviewed by experts in the field at www.mainlineart.org
- **Lecture: *Your Carbon Footprint with environmental photographer Bill Hoo:*** Wed., Nov. 2, 6-8 pm | \$10 | Register at www.mainlineart.org
- **Panorama Virtual Exhibition: *Earth Works:*** January | www.mainlineart.org





Be a Part of Panorama!

Submit Your Work to Earth Works Virtual Exhibition Featuring Cash Awards

Beginning September 10, everyone, regardless of age, ability, or experience, is invited to submit digital photos, videos, or animations to *Earth Works*, a virtual exhibition which will be on view on Main Line Art Center's website (www.mainlineart.org) in January. Cash awards will be given to one adult artist and one youth artist selected as Best in Show.

CALL FOR ENTRIES DETAILS

Submission Dates: September 10-November 5

Submission URL: www.mainlineart.org/panorama2016

Theme: *Earth Works*: Artists of all ages are encouraged to submit their unique vision of the natural world. Visit one of our Green Partner locations to make art, or chose a location of your choice.

Exhibition On View: Beginning January 2017

Works will be pre-screened by Main Line Art Center prior to being published online. For file specifications and more info, visit www.mainlineart.org/panorama2016

EVENTS | CREATIVE PARTNERS

Dates and times subject to change. Please contact Creative Partners directly for more information or to confirm program details.



3rd Street Gallery

45 N. 2ND ST., PHILADELPHIA, PA | WWW.3RDSTREETGALLERY.COM

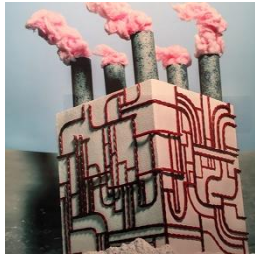


www.mainlineart.org | 746 Panmure Road Haverford, PA 19041 | 610.525.0272

Founded in 1972, 3rd Street Gallery is one of the oldest artist run cooperatives in Old City, Philadelphia. We stand for a quality presentation and experience of the visual arts, while allowing for experimentation and risk not always possible in commercial galleries.

Our primary mission is to engage the public with insightful and challenging creative works and to support the positive growth of the visual arts in the region.

Hours of Operation: Wednesday-Sunday, 12-5 pm



© Neil Marcello

POST in the Annex: Mixing Technology and Art: Oct. 5-30, 2016

POST: 6th Annual Member Exhibition

First Friday: Friday, October 7, 2016, 5-9 PM

Artist Reception: Sunday, October 9, 2016, 1-3 PM

3rd Street Gallery's POST (Philadelphia Open Studio Tours) 6th Annual Member Exhibition features work from all of our cooperative gallery artist members. We will have a special exhibit within our annex space that spotlights those members who use photo and digital technologies within their art.

Cost: Free

For more info: www.3rdstreetgallery.com/in-the-annex/



Noise Travels © Nicole Patrice Dul

Mixed Media Photo Transfer Demonstration: Oct. 23, 2016, 1:30-3:30 pm

3SG artist Nicole Patrice Dul demonstrates several photo transfer techniques using printed photo copies. She will also show how to add layers to your transfers using gelatin printing to create artful effects. Nicole will be on hand from 1:30-3:30 pm.

Cost: Free

For more info: www.3rdstreetgallery.com/in-the-annex/





Allens Lane Art Center

601 W ALLENS LN., PHILADELPHIA, PA | WWW.ALLENSLANE.ORG

Allens Lane Art Center (ALAC) provides programs and activities that bring our diverse community together to experience and support the arts. Allens Lane Art Center offers opportunities for people to explore their creative potential. In carrying out its mission, Allens Lane Art Center is committed to acceptance of social diversity, promotion of a collaborative environment, personal empowerment, freedom of expression and openness to new ideas.

Hours of Operation: Monday-Friday, 10 am-5 pm



© Ron Tarver

Ron Tarver: New Photographs: Sept. 16-Oct. 21, 2016

Saturday Night Gallery Cocktail Reception: Sept. 17, 2016, 7-9 pm

Ron Tarver is one of Philadelphia's most recognizable photographers. His work has a distinctive charm that sets it apart. In this exhibition, we get to see a brand new selection of works that directly shows how photography has been a thread that has run through his family history. This exhibition is sure to surprise even those who follow the work of this fine artist.

Cost: Free

For more info: www.allenslane.org



www.mainlineart.org | 746 Panmure Road Haverford, PA 19041 | 610.525.0272



Art in City Hall

1400 MARKET ST., PHILADELPHIA, PA | WWW.CREATIVEPHL.ORG

Art In City Hall presents exhibitions that showcase contemporary artwork by emerging and professional visual artists from the Philadelphia region. Encompassing a variety of mediums, techniques, and subjects, this municipal program is committed to presenting a diversity of ideas and artistic explorations. The program strives to link visual artists with the larger community by providing the public with a greater knowledge and appreciation of their artistic achievements.

Hours of Operation: Monday-Friday 10 am- 4 pm | Closed weekends and holidays

Panorama: Image Based Art in the 21st Century Exhibition: Oct. 10-Dec. 2, 2016

Main Line Art Center proudly presents a selection of works by *Panorama* Feature Exhibition *Enlightened Earth* artists Mark Dorf, Julianna Foster, and Nick Pedersen at Philadelphia's City Hall. On view at Main Line Art Center in Haverford, Sept. 10 to Nov. 5, *Enlightened Earth* features works that engage the photographic medium and digital media to explore nature and our complex relationship to its past, present, and future.

Cost: Free

For more info: www.creativephl.org



ArtsQuest/Banana Factory Arts Center

25 W 3RD ST., BETHLEHEM, PA 18015 | WWW.ARTSQUEST.ORG

ArtsQuest is a Bethlehem-based nonprofit dedicated to presenting music, arts, festivals, cultural experiences and educational and outreach programs that aid in economic development, urban revitalization and community enrichment. Through festivals such as its flagship event, Musikfest; the Banana Factory Arts Center; and the ArtsQuest Center and SteelStacks arts and cultural campus, ArtsQuest's programming reaches more than 1.5 million people annually.

Hours of Operation: Monday-Friday, 8 am-9:30 pm | Saturday & Sunday, 8:30 am-5 pm



www.mainlineart.org | 746 Panmure Road Haverford, PA 19041 | 610.525.0272



Image: Courtesy of the Banana Factory

Olympus InVision Photo Festival: Nov. 4-6, 2016

The Olympus InVision Photo Festival is a premier photo festival with broad appeal to amateur and professional photographers. Designed to foster excitement and dialogue between a diverse group of participants, the festival provides intimate access to world-class photographers and their work through innovative workshops, classes and presentations. InVision leverages the unique attractions, history and landscape of the surrounding region and celebrates its diverse artistic and cultural community.

Cost: Free

For more info: www.invisionphotofestival.org



Big Bright Monster

BIG BRIGHT MONSTER: 20 S 15TH ST., 8TH FLOOR, PHILADELPHIA, PA

WWW.BIGBRIGHTMONSTER.COM

THE STRONG: NATIONAL MUSEUM OF PLAY: 1 MANHATTAN SQUARE DR., ROCHESTER, NY

WWW.MUSEUMOFPLAY.ORG

Big Bright Monster is a Philadelphia based immersive technology studio that develops interactive virtual reality, augmented reality, and projection mapped experiences.

Digital Demo and Artist Collaboration at the Panorama Festival at Main Line Art Center:

Oct. 22, 2016, 6-9 pm

Jump!: July 24, 2016-Dec. 31, 2017

Jump! is Big Bright Monster's interactive projection installation at The Strong Museum of Play that reacts to the way users jump. Users must collaborate and jump to set a rock on fire and make it explode. Each user starts a fire with a different color.

Cost: Museum Fees: General Admission: \$14, Under 2 & Members: Free

For more info: <http://bigbrightmonster.tumblr.com/>



BRYN MAWR **FILM INSTITUTE**

Bryn Mawr Film Institute

824 LANCASTER AVE., BRYN MAWR, PA | WWW.BRYNMAWRFILM.ORG

Bryn Mawr Film Institute (BMFI) is a nonprofit, member-supported motion picture theater and film education center located in Bryn Mawr, PA. BMFI is dedicated to promoting shared experiences that entertain, engage, and educate audiences through a diverse range of independent-minded films, a full curriculum of courses, and an extensive program of special events. BMFI builds community through film culture, while maintaining strong connections to its historic venue's cinematic past.

Hours of Operation: BMFI shows a variety of films and programs seven days a week. The Box Office opens 30 minutes before the first show of the day. Check BrynMawrFilm.org for accurate listings.



Photo by Edward Burtynsky, courtesy of eOne

Watermark by Edward Burtynsky Screening: Sept. 28, 2016, 7-9 pm

Watermark is a feature documentary from multiple-award winning filmmakers Jennifer Baichwal and Nick de Pencier, and renowned photographer Edward Burtynsky, marking their second collaboration after *Manufactured Landscapes* in 2006. The film brings together diverse stories from around the globe about our relationship to water: how we are drawn to it, what we learn from it, how we use it and the consequences of that use.

Cost: \$10

For more info: www.mainlineart.org/panorama2016



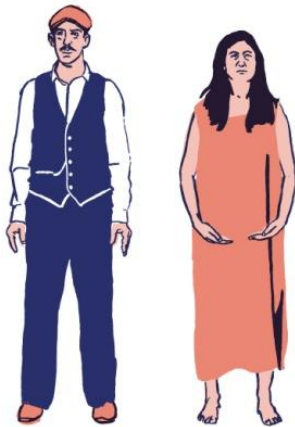


Center for Emerging Visual Artists

237 S. 18TH ST., #3A, PHILADELPHIA, PA | WWW.CFEVA.ORG

Dedicated to engaging and supporting artists and their audiences, The Center for Emerging Visual Artists' mission is: to coordinate a strong regional support system for visual artists; to advance the careers of professional artists in the region; to promote relationships between artists and the communities in which they live; and to increase access to the visual arts for the citizens of the greater Philadelphia area.

Hours of Operation: Monday-Friday 11 am-5 pm | All other times by appointment



© Nick Cassway

Above the Sounds of Ideologies Clashing: Oct. 8-Nov. 10, 2016

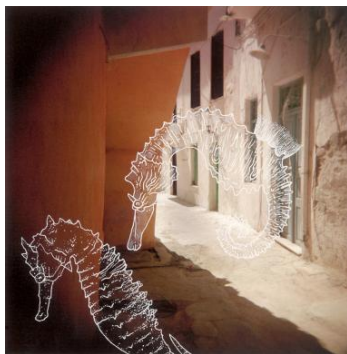
Nick Cassway merges a fine arts practice with commercial design, iconography, and illustration to create vibrant works with bold and impactful imagery. Coinciding with POST, *Above the Sounds of Ideologies Clashing* will transform CFEVA's gallery into an immersive room-sized installation. Inspired by the story of Johannes Kelpius, the Hermit of the Wissahickon, Cassway's custom designed wall coverings explore systems of belief through an evolving scene of an encounter between a believer and a skeptic.

Cost: Free

For more info: <http://www.cfeva.org/>



www.mainlineart.org | 746 Panmure Road Haverford, PA 19041 | 610.525.0272



Remnants © Genevieve Coutroubis and John Karpinski

POST—Philadelphia Artists in the Community: Oct. 1-31, 2016

Philadelphia Open Studio Tours (WEST 10/8 & 10/9; EAST 10/22 & 10/23) is the largest tour of artist studios and creative workspaces in the region. Celebrating the diversity of Philadelphia neighborhoods and the artisans that thrive within, *POST—Philadelphia Artists in the Community* will showcase works by selected *POST* participants in City Hall during the month of October. The exhibition will be organized by neighborhood, demonstrating the uniqueness and strength of our city's artistic community.

Cost: Free

For more info: <http://www.philaopenstudios.org/>



Cheltenham Center for the Arts

439 ASHBOURNE RD., CHELTENHAM, PA | WWW.CHELTENHAMARTS.ORG

Since its founding, the Cheltenham Center for the Arts (CCA) has served as a venue for high quality classes, exhibitions and theater programs that have promoted regional artists and showcased the work of children, adults and outstanding faculty in our community.

At CCA we believe that the arts can offer to all ages a means to broaden your horizons, learn new skills and explore new ways of seeing the world. It is our goal to provide a creative environment to nurture that process.

Hours of Operation: Monday-Friday, 10 am-3 pm

Non-Toxic Transfer Program: See website for details.



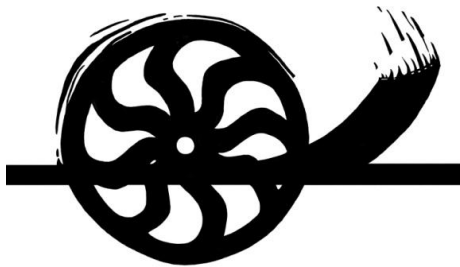


Da Vinci Art Alliance

704 CATHERINE ST., PHILADELPHIA, PA | WWW.DAVINCIARTALLIANCE.ORG

The Da Vinci Art Alliance is a non-profit member-driven arts organization, committed to furthering the arts through community based-arts, cultural and education exchange. DVAA is home to many local artists and maintains artist's studio and gallery spaces. With monthly exhibitions, lectures, and events curated to promote a creative dialogue that crosses disciplines and unites new, emerging, and professional artist. Our members proudly share in the ownership of our building and an honored tradition of volunteerism.

Hours of Operation: Wednesday, 6-8 pm | Saturday-Sunday, 1-5 pm



Star Wheel © Da Vinci Art Alliance

Aberration: Sept. 7-Oct. 2, 2016

For the September exhibition at the Da Vinci Art Alliance the Star Wheel Printers investigate anomalies, imperfections and distortions in their work. The artists depart from conventional printmaking through a synthesis of traditional processes, photographic processes and new media art technologies. Investigating the term Aberration; a photo term meaning defect of focus, such as blurring in an image but also means a departure from what is normal, usual, or expected.

Cost: Free

For more info: <http://www.davinciartalliance.org/>



© Da Vinci Art Alliance



“6” and The Three Realms: A Dialogue Among Earth, Sea, and Sky: Oct. 5-Nov. 30, 2016
During October and November the Da Vinci Art Alliance members present two image-based exhibitions. The October Exhibition, 6, presents large works from photographers Scott Weingarten and Jack Ramsdale, Painters Barbara Sosson, Rachel Citrino, Brad Carmichale, and digital printer Carolyn Lousie Newhouse. The November Exhibition, The Three Realms, presents works from artist Sarah R. Bloom, Denise Mihalik, Denise Perri. The artists use photography and mixed media to explore a dialogue between earth, sea, and sky.

Cost: Free

For more info: <http://www.davinciartalliance.org/>



The Delaware Contemporary

200 S. MADISON ST., WILMINGTON, DE | WWW.THEDCCA.ORG

The Delaware Contemporary is a dynamic gathering place for the exploration of new ideas at the intersection of art, design, and technology, providing access to the artistic process that inspires us to infuse creativity into our daily lives. The Delaware Contemporary presents nearly 30 compelling exhibitions annually of regionally, nationally, and internationally recognized artists, as well as innovative arts education through on-site classes, summer camps, and partnerships with community groups and schools.

Hours of Operation: Tuesday, Thursday, Friday, Saturday 10 am-5 pm | Wednesday, Sunday 12-5 pm

Video Exhibition: Nov. 18, 2016-Jan. 12, 2017

A video exhibition based on the exploration and worship of outer space.

Cost: Free

For more info: <http://www.thedcca.org/>



FRINGEARTS

FringeArts

140 N. COLUMBUS BLVD., PHILADELPHIA, PA | WWW.FRINGEARTS.COM

FringeArts is Philadelphia's home for contemporary performance, presenting progressive, world-class art that stretches the imagination and boldly defies expectation. FringeArts exposes audiences to unpredictable dance, theater and music performances by accomplished and emerging innovators who are pushing the boundaries of art-making and redefining the artistic landscape worldwide.

Hours of Operation: Monday-Friday, 10 am-12 pm | Saturday-Sunday, 5-12 pm



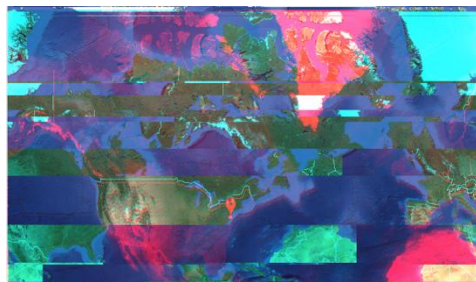
© FringeArts

2016 Fringe Festival: Sept. 9-24, 2016

The Fringe Festival, presented by FringeArts, is a 17-day, city-wide celebration of innovation and creativity in contemporary performance. Each September, the Festival explodes into every nook and cranny in neighborhoods across Philadelphia with more than 1,000 artistically daring performances, including national and international performances curated by FringeArts, and works that are produced by independent artists and promoted by FringeArts.

Cost: Check individual event listings

For more info: <http://fringearts.com/all-presentations/>



© FringeArts

Digital Fringe: Sept. 9-24, 2016

A new platform for web and app-based art including Instagram plays, live streaming performance, location-based video poems and more. Visit the digital neighborhood at fringearts.com

Cost: Free

For more info: <http://fringearts.com/all-presentations/>



www.mainlineart.org | 746 Panmure Road Haverford, PA 19041 | 610.525.0272

THE GALLERIES AT MOORE

The Galleries at Moore

20TH ST. AND THE PARKWAY, PHILADELPHIA, PA | [HTTP://THEGALLERIESATMOORE.ORG/](http://thegalleriesatmoore.org/)

The Galleries at Moore support Moore College of Art & Design's role as a cultural leader by providing a forum for exploring contemporary art & ideas and enriching the artistic and intellectual climates of the college, the Greater Philadelphia community, and beyond. Our exhibitions and programs – which are free and open to the public – create community through dialogue and participation, and inspire an appreciation for the visual arts as a vital force in contemporary culture.

Hours of Operation: Monday-Saturday, 11 am-5 pm



Trump 1-7 © Stefan Abrams

Altered States: Faculty Triennial: Sept. 17-Dec. 10, 2016

Showcasing the diversity of work created by the artists and designers that teach at Moore College of Art & Design, the 2016 iteration of this tri-annual presentation includes a curated selection of faculty works in a wide range of media that examine elements of the fantastic, explore transformation and different states of consciousness, are dramatically impacted by their context, and inform and/or initiate social change. Curated by John Caperton, Jensen Bryan Curator at The Print Center Philadelphia, the exhibition is complemented by a series of talks that provide a forum for Moore's faculty to discuss their practice & process and to present their research & expertise.

Artists in the exhibition: Stefan Abrams, Julia Bunn, Liz Collins, Elaine Erne, Robert Goodman, Rachael Gorchoy, Alexis Granwell, Max Groff, David Guinn, Jay Haon, Paul Hubbard, Jeanne Jaffe, Lovett/Codagnone, Anna Neighbor, Lynn Palewicz, Sheetal Prajapati, Theresa Rose, Julia Staples, Chad States, Daniel Tucker, Heather Ujije, and Kimberly Voigt.

Cost: Free

For more info: <http://moore.edu/the-galleries-at-moore/exhibitions/current-exhibitions>





GRAVERS LANE GALLERY

Gravers Lane Gallery

8405 GERMANTOWN AVE., PHILADELPHIA, PA | WWW.GRAVERSLANEGALLERY.COM

Representing the finest in Contemporary Art of all medium: Painting, Sculpture, Fiber, Glass, Photography, Jewelry, Ceramic, Wood and Mixed Media Art. Corporate and Private Art Consulting. Gravers Lane Gallery is one division of The Goldenberg Group, which is comprised of three entities: Goldenberg Development, People Helping People Foundation and Goldenberg Enterprises.

Hours of Operation: Monday-Wednesday, 10 am-5 pm | Thursday-Saturday, 10 am-8 pm | Sunday, 11 am-5 pm | And by appointment



CANTOR
FITZGERALD
GALLERY

Haverford College: Cantor Fitzgerald Gallery

WHITEHEAD CAMPUS CENTER, HAVERFORD COLLEGE, 370 LANCASTER AVE., HAVERFORD, PA
WWW.HAVERFORD.EDU

An integral part of the John B. Hurford '60 Center for the Arts and Humanities, the Cantor Fitzgerald Gallery (CFG) is the principal venue for the Haverford College Exhibitions Program, which aims to extend cultural literacy through the display and analysis of work across visual and material media.

Hours of Operation: Monday-Friday, 11 am-5 pm | Wednesday, 11 am-8 pm | Saturdays-Sundays, 12-5 pm



www.mainlineart.org | 746 Panmure Road Haverford, PA 19041 | 610.525.0272



Bring Your Own Body: Transgender Between Archives and Aesthetics: Oct. 21-Dec. 11, 2016

Bring Your Own Body, curated by Jeanne Vaccaro with Stamatina Gregory, presents the work of transgender artists and archives, from the institutional and sexological to the personal and liminal. Taking its title from an unpublished manuscript by intersex pioneer Lynn Harris, the exhibit historicizes the sexological and cultural imagery of transgender through a curatorial exploration of the Kinsey Archives. Simultaneously it presents contemporary transgender art and world making practices that contest existing archival narratives and construct new historical genealogies.

Cost: Free

For more info: exhibits.haverford.edu/bringyourownbody

INLIQUID[™]
art+DESIGN

InLiquid Art & Design

INLIQUID: 1400 N. AMERICAN ST., #314, PHILADELPHIA, PA | WWW.INLIQUID.ORG

PAINTED BRIDE ART CENTER: 230 VINE STREET, PHILADELPHIA, PA | [HTTPS://PAINTEDBRIDE.ORG/](https://PAINTEDBRIDE.ORG/)

InLiquid is a 501(c)(3) nonprofit organization that mobilizes and makes accessible the visual arts culture of the greater Philadelphia region in order to unite communities, establish wider audiences for artists and designers, facilitate the relationship between artists and collectors, and nurture the public's appreciation of all forms of visual art.

Hours of Operation at InLiquid: Monday-Friday, 10 am-6 pm

Hours of Operation at Painted Bride: Tuesday-Saturday 12-6 pm



www.mainlineart.org | 746 Panmure Road Haverford, PA 19041 | 610.525.0272



Faye © Elizabeth DeMartino

Elizabeth DeMartino: Streets of an Agoraphobic: Sept. 2-Oct. 22, 2016

InLiquid presents "Streets of an Agoraphobic," which is a solo exhibition by InLiquid artist member Elizabeth DeMartino. New work by the photographer relates to her challenges with agoraphobia. DeMartino studied at Moore College of Art and Design, but most of her experiences were on the streets of Philadelphia. It's here that she learned to confront her anxiety and grow as a photographer. With each shutter of the camera, she felt less fear. Battling agoraphobia for years and beating it without medication, photography became her medication and through that came beautiful works of art. Her sufferings, despair, and successes can be seen in the faces of everyone included in this exhibition. The work will be on view at the Painted Bride Art Center from Sept. 2 - Oct. 22, 2016.

Cost: Free

For more info: www.inliquid.org

Institute of
Contemporary
University Art
of Pennsylvania

118 S. 36th Street, Philadelphia, PA 19104
(215) 898-7108, icaphila.org

Institute of Contemporary Art

118 S. 36TH ST., PHILADELPHIA, PA | WWW.ICAPHILA.ORG

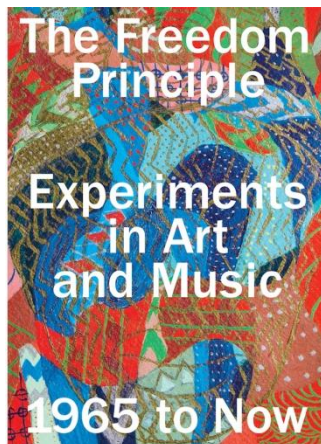
A stronghold of cutting edge art for half a century, the Institute of Contemporary Art has earned international acclaim among contemporary art museums. ICA has led the way with the first-ever museum shows of Andy Warhol, Laurie Anderson, Agnes Martin, Robert Indiana and other influential artists.

Since 1965, ICA has been known for shaking up the city with shows revealing the hottest and coolest trends in contemporary art.

Hours of Operation: Wednesday, 11 am–8 pm | Thursday & Friday, 11 am–6 pm | Saturday & Sunday, 11 am–5 pm | Monday & Tuesday Closed



www.mainlineart.org | 746 Panmure Road Haverford, PA 19041 | 610.525.0272



© Institute of Contemporary Art

The Freedom Principle: Experiments in Art and Music, 1965 to Now: Sept. 14, 2016-Mar. 19, 2017

The Freedom Principle: Experiments in Art and Music, 1965 to Now links the vibrant legacy of the 1960s African American avant-garde to current art and culture. It is occasioned in part by the fiftieth anniversary of the founding of the Association for the Advancement of Creative Musicians (AACM), a still-flourishing organization of Chicago musicians whose interdisciplinary explorations expanded the boundaries of jazz. Alongside visual arts collectives such as the African Commune of Bad Relevant Artists (AfriCOBRA), the AACM was part of a deep engagement with black cultural nationalism both in Philadelphia, Chicago, and around the world during and after the civil rights era. Combining historical materials with contemporary responses, *The Freedom Principle* illuminates the continued relevance of that engagement today.

Cost: Free

For more info: <http://www.icaphila.org>



Media Arts Council

609-B W. STATE ST., MEDIA, PA | [HTTP://MEDIAARTSCOUNCIL.ORG/](http://MEDIAARTSCOUNCIL.ORG/)

The Media Arts Council's vision is to inspire and cultivate the arts. Our mission is to actively support local artists and integrate a wide range of arts into the life of the entire community. Our overriding passion is the importance of arts in the community and support all who take part. We have a gallery with monthly exhibits and concerts, the Media Film Festival, classes, workshops and lectures.

Hours of Operation: Thursday-Saturday 4-7 pm

10th Annual Juried Photography Exhibit: Oct. 8-Nov. 5, 2016



www.mainlineart.org | 746 Panmure Road Haverford, PA 19041 | 610.525.0272

Media Arts Council Juried Photography Exhibit is an annual exhibit that seeks to draw unique photographs from area artists, with a focus on the town of Media, PA, and all of Delaware County. Photographs may depict any subject matter, provided it reflects the theme—"Contrast"—and was in Delaware County and/or the Borough of Media.

Cost: Free

For more info: <http://mediaartscouncil.org/events/juriedphotography-overview/>

2nd Saturday Monthly Art Exhibit and Concert

Every 2nd Saturday for the past 11 years Media Arts Council has hosted art openings and free concerts in downtown Media. Art openings are local, regional and national artists working in a wide variety of media; painting, photography, mosaic, quilts and paper cutouts.

Concerts are intimate affairs with jazz, blues, classical and folk music. All are held at our gallery 609B W. State Street Media. A perfect way to kick off a great Saturday evening!

Cost: Free

For more info: <http://mediaartscouncil.org/>



Painted Bride Art Center

230 VINE ST., PHILADELPHIA, PA | WWW.PAINTEDBRIDE.ORG

Founded in 1969 by a group of visual artists, Painted Bride Art Center is part of the Alternative Space movement of the 1960s and 70s. In an era when underrepresented artists—women, gays and lesbians, people of color, the disabled, etc.—struggled to gain recognition from commercial institutions, the Alternative Space movement was dedicated to maximizing cultural diversity and visibility in the arts. Within a small network of organizations, Painted Bride Art Center strove to grant artists of every stripe full control over their work and a platform for their vision.

Elizabeth DeMartino: Streets of an Agoraphobic, Presented by InLiquid: Sept. 2-Oct. 22, 2016

Cost: Free

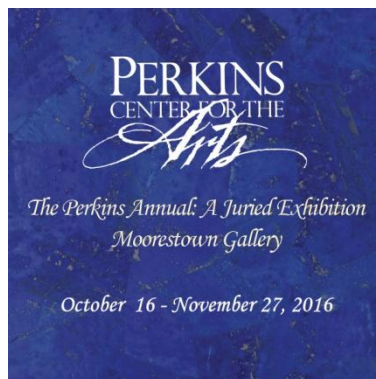
For more info: www.paintedbride.org



Perkins Center for the Arts

395 KINGS HIGHWAY, MOORESTOWN, NJ | WWW.PERKINSARTS.ORG

Perkins Center for the Arts strives to enrich lives and inspire learning, collaboration, interdisciplinary & intercultural experiences through the arts with programs and services which include; a conservatory of music; visual & performing arts classes; exhibitions; concerts; artist-led school residency programs; a scholarship and fee-based camp for urban and suburban youth; folk life center; and community enrichment projects throughout South Jersey.



The Perkins Annual: Open Media Exhibition: Oct. 16-Nov. 27, 2016

Opening Reception: Oct. 16, 2016, 1-4 pm

Cost: Free

For more info: <http://perkinsarts.org/event/perkins-annual-juried-exhibition/>

The P H O T O REVIEW

The Photo Review

304 E. MAPLE AVE., SUITE 200, LANGHORNE, PA | WWW.PHOTOREVIEW.ORG

The Photo Review publishes a critical journal of photography and a newsletter that lists exhibitions throughout the Mid-Atlantic region and California as well as calls for work and news from around the world. It has sponsored an important annual photography competition since 1985; holds an annual garden party for photographers, collectors, curators, and others; and presents an annual benefit auction that includes work from the 19th century to the present.



www.mainlineart.org | 746 Panmure Road Haverford, PA 19041 | 610.525.0272



Fountain Head © Krause, Courtesy of The Photo Review

The Photo Review Benefit Auction: Oct. 7-8, 2016, 7 pm

The Photo Review will hold its Annual Benefit Auction on Saturday, October 8, 2016, at 7 pm at Hamilton Hall, University of the Arts at Broad and Pine Streets in Philadelphia, Pennsylvania. The event will feature an international slate of photographers as well as a host of Philadelphia artists. In addition, a broad range of 19th-century and vernacular photographs is up for bid. Preview October 7, 11-5, and October 8, 11-6.

Cost: Free

For more info: <http://www.photoreview.org/wordpressindex/events/benefit-auction/>

THE PRINT CENTER

The Print Center

1614 LATIMER ST., PHILADELPHIA, PA | WWW.PRINTCENTER.ORG

For more than a century, The Print Center has encouraged the growth and understanding of photography and printmaking as vital contemporary arts through exhibitions, publications and educational programs. It has an international voice and a strong sense of local purpose. Free to the public, it presents exhibitions which highlight established and emerging, local, national and international artists. Its Gallery Store offers the largest selection of contemporary prints and photographs in Philadelphia.

Hours of Operation: Tuesday – Saturday, 11 am-6 pm





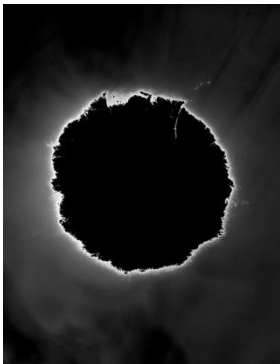
Victoria Burge in her Studio. Photo: Steven Dufala

Penumbra: Victoria Burge: Sept. 16-Nov. 19, 2016

The Print Center presents *Penumbra*, an exhibition of new work by Victoria Burge (Philadelphia, PA). *Penumbra* includes large and small-scale photographic, printed and drawn works, which present a variety of interpretations of the effects of light. Burge has created a number of major new works for the exhibition, including an immersive installation created by projecting light through a series of paper matrixes which bathes the gallery with a mesmerizing display of flickering light and shadow.

Cost: Free

For more info: www.printcenter.org



The Void series © Garrett Hansen

Celestial/Terrestrial: Caleb Charland, Marianne Dages, Garrett Hansen: Sept. 15-Nov. 19, 2016

The Print Center presents *Celestial/Terrestrial*, a group exhibition of photographs and prints featuring images which resemble things celestial, but are derived from a variety of unrelated sources presenting work by Caleb Charland (Bangor, ME), Marianne Dages (Philadelphia, PA) and Garrett Hansen (Lexington, KY).

Cost: Free

For more info: www.printcenter.org





Rowan University Art Gallery

ROWAN UNIVERSITY ART GALLERY: 301 HIGH ST., GLASSBORO, NJ

ROWAN UNIVERSITY ART GALLERY WEST: WESTBY HALL ON RT. 322, GLASSBORO, NJ

WWW.ROWAN.EDU/ARTGALLERY

Rowan University Art Gallery serves as a premier cultural destination for South Jersey, the Rowan community, and surrounding region. As a center for contemporary art by emerging and established professional artists from the region, nation, and global community, the gallery is committed to presenting the most current in contemporary art practices.

Hours of Operation: Monday-Friday, 10 am-5 pm | Saturday, 12-4 pm

Dread Scott: A Sharp Divide: Sept. 6-Nov. 5, 2016

Opening Reception & Panel Discussion: Sept. 15, 2016, 6-9 pm

Our fall 2016 exhibition series includes a solo exhibition of photography and video works by Dread Scott, an artist who seeks to propel history forward by making revolutionary works.

For more info: <http://www.rowan.edu/artgallery/>



Twelve Gates Arts

51 N 2ND ST., PHILADELPHIA, PA | [HTTP://TWELVEGATESARTS.ORG/](http://TWELVEGATESARTS.ORG/)

Twelve Gates Arts, established in 2011, is a non-profit organization based in Philadelphia, Pennsylvania. The "gates" refer to the fortified gates that walled many ancient cities such as Delhi, Lahore, Jerusalem, and Rhodes - inside which lay the heart of each city's art and culture, and today this reference offers perspectives on history and possibilities.

Hours of Operation: Wednesday – Saturday, 11 am-5 pm

Madad Amina Ahmed, Solo Exhibition: Sept. 2-Oct. 12, 2016

One arrives at a state of beholdenness when one sees deeply into everything that is given. Being beholden binds one to the Giver, leaving one in a state of ecstatic bindingness. The binding can



www.mainlineart.org | 746 Panmure Road Haverford, PA 19041 | 610.525.0272

never be whole while one lives, and so one is filled with longing. A longingness that leads once again to the joy of beholdenness. One's work becomes a gift to the Giver, made from and of this eternal cycle.

Cost: Free

For more info: <http://twelvegatesarts.org/>

Sheherzade's Gift: Subversive Narratives: Oct. 15-Nov. 30, 2016

One of the most enduring and influential books in global popular culture is "A Thousand and One Nights." Understood as an amalgamation of fables originating from West and South Asia, its main protagonist is the fictional Queen Sheherzade, whose stories are told to countless young girls from North Africa to South East Asia. The Queen has been a polarizing figure for many women who have grown up with her, some berating her for failing to challenge patriarchal mores while others have a keener understanding of the nature of her subversions.

Cost: Free

For more info: <http://twelvegatesarts.org/>



The University of the Arts

Gallery 1401

TERRA HALL, 211 S. BROAD ST., 14TH FL., PHILADELPHIA, PA | WWW.UARTS.EDU/ABOUT/GALLERY-1401

Hours of Operation: Monday-Friday 10 am-5 pm | Weekends by appointment

Samer Mohdad—Accomplished Visions: The Arabs: Aug. 26-Sept. 23, 2016

Marc Asnin—Uncle Charlie: Sept. 30-Oct. 28, 2016

Kathryn Kolb—Dynamics of Nature: Nov. 4-Dec. 2, 2016

Rosenwald-Wolf Gallery

ANDERSON HALL, 333 S. BROAD ST., PHILADELPHIA, PA | WWW.UARTS.EDU/ABOUT/ROSENWALD-WOLF-GALLERY

Hours of Operation: Monday-Friday 10 am-5 pm | Weekends by appointment

The Magic of Color/The Power of Signs: Armin Hoffman: Aug. 24-Oct. 7, 2016

Sol Mednick Gallery

TERRA HALL, 211 S. BROAD ST., 15TH FL., PHILADELPHIA, PA | WWW.UARTS.EDU/ABOUT/SOL-MEDNICK-GALLERY



www.mainlineart.org | 746 Panmure Road Haverford, PA 19041 | 610.525.0272

Hours of Operation: Monday-Friday 10 am-5 pm | Weekends by appointment

David Pace—West Africa: The Road & The Quarry: Aug. 26-Sept. 23, 2016

Ben Bohane—The Black Islands: Spirit and War in Melanesia (1994-2012): Sept. 30-Oct. 28, 2016

Photo Review—Best of Show: Juried by Malcolm Daniels: Nov. 4-Dec. 2, 2016



Vox Populi

319 N. 11TH ST., #3, PHILADELPHIA, PA | WWW.VOXPOPULIGALLERY.ORG

Vox Populi is a contemporary art space and collective that works to support the challenging and experimental work of under-represented artists with monthly exhibitions, gallery talks, performances, lectures, and related programming. For over 27 years, Vox Populi has played a unique role in the cultural life of Philadelphia by bringing our audience a diverse range of programming and providing a supportive environment in which artists can take risks.

Hours of Operation: Wednesday-Sunday 12-6 pm



Hanoman © Adri Valery Wens

That Which Cannot Not Be: Sept. 2-Oct. 23, 2016

That Which Cannot Not Be features artwork by Camae Ayewa, Ella Barclay, Marley Dawson, Catherine Pancake, Mike Parr, Adri Valery Wens, and Wilmer Wilson IV. These artists have action-based practices. Their works vibrate through interstices to make, unmake, and remake our spatial and temporal experiences. The exhibition includes video, photographic works, performance, and installation.

Cost: Free

For more info: <http://voxpathuligallery.org/exhibitions/that-which-cannot-not-be/>





WP Gallery (Works on Paper, inc)

1611 WALNUT ST., #B, PHILADELPHIA, PA | WWW.WORKSONPAPER.BIZ

Contemporary Art Gallery in Philadelphia since 1995 on Walnut street. The gallery specializes in prints and works on paper by emerging, mid-career and established artists.

Hours of Operation: Tuesday – Saturday, 11 am-5 pm | Summer Hours: Saturday by appointment | Closed August 15-September 4



Blue Loop © Richard Diebenkorn

Summer Exhibition: July 31-Sept. 4, 2016
Select inventory from the WP GALLERY Collection.

Cost: Free

For more info: www.worksonpaper.biz

GREEN PARTNERS

Appleford

770 MT. MORO RD., VILLANOVA, PA | WWW.APPLEFORDESTATE.COM

Tucked away at the end of a long tree-lined driveway, Appleford is the quintessential Main Line country estate. The sprawling fieldstone house is an important example of Pennsylvania farmhouse architecture, surrounded by 24 picturesque acres designed by noted Philadelphia landscape architect Thomas Sears. The property is owned by Lower Merion Township and supported by volunteers. Visitors are invited to stroll the grounds



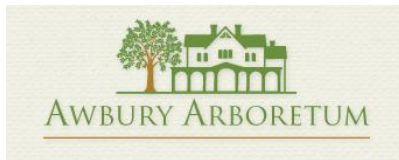
www.mainlineart.org | 746 Panmure Road Haverford, PA 19041 | 610.525.0272

and enjoy the lush formal gardens and rhododendron tracts, set off by a stream, pond and waterfall.

Hours of Operation: Open daily until sunset

Main Features: Appleford is beautiful in every season, and artists are invited to set up their easels at any time to paint en plain air. The grounds also present an ideal setting for informal photography or formal sessions, but because the house is often rented for events, especially on weekends, professional photographers are advised to call in advance and schedule a time. A small tax-deductible contribution is appreciated.

Cost: Free



Awbury Arboretum

1 AWBURY RD., PHILADELPHIA, PA | [HTTP://AWBURY.ORG/](http://awbury.org/)

Tucked away in the historic Germantown neighborhood of Northwest Philadelphia, Awbury Arboretum is a vibrant landscape with a rich history. Once the private enclave of an extended Quaker family, Awbury Arboretum has been open to the public free of charge as a public park and arboretum for nearly 100 years. Its 55-acre historic landscape now stands as a green oasis in a densely-populated urban environment.

Nature, history, and community intersect at Awbury, and the Awbury Arboretum Association is committed to stewarding the relationships between these three pillars of our mission, and continuing to tell and write its story.

Hours of Operation: Open daily from dawn to dusk

Main Features: Awbury Arboretum boasts a variety of natural views that would be perfect for photographers and explorers alike. Walk through the English landscape of long views, copses, and specimen trees, meadows, and an enclosed garden. Visit the agricultural village that hosts food crops, a community garden and more! Your visit wouldn't be complete without a tour of the Francis R. Cope House, a magnificent Victorian mansion we have on site.

Cost: Free



Bucks County Community College—Tyler Formal Gardens

275 SWAMP RD., NEWTOWN, PA | WWW.BUCKS.EDU

Built in the early 1930s by George and Stella Tyler on a 2,000 acre estate in Bucks County, the gardens reflect early 20th century horticulture, and originally were influenced by larger Italian and French gardens.

Divided into rooms and levels, separated by shrubs and stone walls, the gardens include formal manicured lawns, water fountains, gravel pathways, and espalier, and bronze sculpture.

The gardens are on the original Newtown campus of Bucks County Community College. The college offers a range of academic, professional, certificate and personal enrichment programs, enrolling thousands of students each year. See bucks.edu for more information.

Hours of Operation: Open from dawn to dusk when BCCC is open

Main Features: Tyler Formal Gardens are especially known for the numerous bronze sculptures of Stella Elkins Tyler who founded the Tyler School of Art at Temple University in 1935.

Cost: Free



Chanticleer

786 CHURCH RD., WAYNE, PA | [HTTP://CHANTICLEERGARDEN.ORG/](http://CHANTICLEERGARDEN.ORG/)

Within 30 minutes of Philadelphia, Chanticleer is one of the great gardens of the region. The garden opened to the public in 1993 and owns 47 acres, 35 of which are manicured gardens. The main path is approximately a mile in length. There are seven Horticulturists, each responsible for the design, planting, and maintenance of an area. The areas are continually evolving, each with its own feel, yet joined together as one complete unit. Come discover why London's Financial Times calls us "planted to perfection".

Hours of Operation: Wednesday-Sunday, 10 am-5 pm

Main Features: Chanticleer has been called the most romantic, imaginative, and exciting public garden in America. The garden is a study of textures and forms, where foliage trumps flowers, the gardeners lead the design, and even the drinking fountains are sculptural. It is a garden of pleasure and learning, relaxing yet filled with ideas to take home.



We hope you feel like a special guest of the Rosengartens. Sit and enjoy the views. Relax, read, converse, meditate. Feel the sun on your back and the grass beneath your feet as you listen to the birds and enjoy the scents of the garden.

Cost: \$10 per person, children 12 and under are free



Hagley Museum and Library

200 HAGLEY CREEK RD., WILMINGTON, DE | WWW.HAGLEY.ORG

At Hagley, we invite people of all ages to investigate and experience the unfolding history of American business, technology, and innovation and its impact on the world, from our home at the historic DuPont powder yards on the banks of the Brandywine River.

Hours of Operation: Open daily from 10 am-5 pm

Main Features: Located on the "most beautiful mile of the Brandywine," Hagley's location offers spectacular views of the Brandywine River. We also have an on-site garden with beautiful blooming flowers and trees.

Cost: Free for children 5 and under and Hagley Members and current military personnel and their families, \$14 for adults, \$5 for children 6-14, \$10 for students and seniors

Haverford College Arboretum

370 LANCASTER AVE., HAVERFORD, PA | WWW.HAVERFORD.EDU/ARBORETUM

200 acre campus that is a historical arboretum with over 2000 trees labeled. The Reptonian style is an English pastoral landscape with several display gardens, a duck pond, meadows and woodlands.

Hours of Operation: Open daily from dawn to dusk

Main Features: Visit for amazing vistas, large trees, a pond, a Nature Trail, and alleys of trees.

Cost: Free



www.mainlineart.org | 746 Panmure Road Haverford, PA 19041 | 610.525.0272

Historic Fair Hill

2901 GERMANTOWN AVE., PHILADELPHIA, PA | [HTTP://HISTORICFAIRHILL.ORG/](http://historicfairhill.org/)

Historic Fair Hill is a community space and historic burial ground located in the heart of North Philadelphia. It is the final resting place of brave, [pioneering](#) men and women who fought for freedom, civil rights, and equality for all human beings. Today we cultivate this space for a new generation of inquisitive minds, active hands, and generous hearts.

Hours of Operation: Tuesday & Saturday, 9 am-3 pm | Thursday, 12-6 pm



Morris Arboretum of the University of Pennsylvania

100 E. NORTHWESTERN AVE., PHILADELPHIA, PA | [WWW.MORRISARBORETUM.ORG](http://www.morrisarboretum.org)

The Morris Arboretum of the University of Pennsylvania is located at 100 East Northwestern Avenue in the Chestnut Hill section of Philadelphia. The 92-acre horticulture display garden features a spectacular collection of mature trees in a beautiful and colorful landscape. The Arboretum includes numerous picturesque spots such as a formal rose garden, historic water features, a swan pond, and the only remaining freestanding fernery in North America. The Arboretum is listed on the National Register of Historic Places and is also the official arboretum of Pennsylvania. A permanent nationally award winning exhibit, Out on a Limb – a Tree Adventure adds to Morris Arboretum's allure by transporting visitors 50 feet up into the treetops on a canopy walk that requires no climbing.

Hours of Operation: Monday-Friday 10 am-4 pm | Saturday-Sunday 10 am-5 pm | Earlybird Saturdays May-Oct., 8 am-5 pm | Late Night Wednesdays June-Aug., open until 8 pm

Main Features: Patrick Dougherty's sculpture, A Waltz in the Woods, made entirely of woven sticks, Out on a Limb canopy walk which takes visitors 50 feet up into the treetops without climbing, beautiful and colorful gardens including a world class, Rose Garden Swan Pond, and Garden Sculptures

Cost: Adults: \$17, Youth (3-17): \$9, Seniors (65+): \$15, Members and children under 3: Free





Natural Lands Trust—Saunders Woods Preserve

1020 WAVERLY RD., GLADWYNE, PA | [HTTPS://NATLANDS.ORG/PRESERVES-TO-VISIT/LIST-OF-PRESERVES/SAUNDERS-WOODS-PRESERVE/](https://natlands.org/preserves-to-visit/list-of-preserves/saunders-woods-preserve/)

Saunders Woods Preserve is a 25-acre natural oasis in the heart of the Main Line. Donated to Natural Lands Trust in 1988 by Dorothy Saunders, the property—originally known as “Little Farm”—has long been a place of refuge for both people and wildlife. For decades, the preserve’s trails and circa-1830 barn have welcomed families, students, scout troops, equestrians, and community members; the forest and meadows are home to a myriad of songbird species and other wildlife.

Hours of Operation: Open daily from dawn to dusk

Main Features: Visit our Historic 1800s barn with stone springhouse. There are 1.5 miles of unpaved trails ranging from easy to moderate to explore, where you can look for the variety of wildlife inhabiting our space. View birds including Eastern Bluebird, American Goldfinch, and Pileated Woodpecker, and look for animals including the red fox, American toad, and box turtle. You can even go horseback riding on designated trails under good conditions. Explore our cool-season agricultural grass meadows and woodlands with tulip, oak, and beech trees. Come view wildflowers in the spring including mayapple, spring-beauty, and trout-lily. There’s even an unnamed tributary to the Schuylkill River that runs through the preserve.

Cost: Free



Smith Memorial Playground & Playhouse

3500 RESERVOIR DR., EAST FAIRMOUNT PARK, PHILADELPHIA, PA
[HTTP://SMITHPLAYGROUND.ORG/](http://smithplayground.org/)

Smith Memorial Playground & Playhouse was built with a bequest from Richard and Sarah Smith, and was dedicated to the memory of their adult son, Stanfield. Smith’s beautiful, 16,000 square foot Playhouse was designed solely as a play space for children by one of Philadelphia’s most prominent late 19th century architects, James H. Windrim. The Playground is situated on its original historic landscape – 6 1/2 acres of open fields, wooded terrain, and sloped hills – and is home to the century old Ann Newman Giant Wooden Slide, a treasured play experience for generations of Philadelphia’s children, as well as other unique pieces of play equipment.

Hours of Operation:



www.mainlineart.org | 746 Panmure Road Haverford, PA 19041 | 610.525.0272

Playground: (April 1-Sept. 30) Tuesday-Friday, 10 am-6 pm | Saturday-Sunday, 10 am-7 pm | **(Oct. 1-Dec. 30)** Friday-Sunday, 10 am-4 pm

Playhouse: (April 1-Sept. 30) Tuesday-Friday, 10 am-4 pm | Saturday-Sunday, 10 am-6 pm | **(Oct. 1-Mar. 31)** Tuesday-Sunday, 10 am-4 pm

Main Features: Smith is home to the famed 39' long Ann Newman Giant Wooden Slide built in 1905. The Playground is situated on its original historic landscape –6 1/2 acres of open fields, wooded terrain, and sloped hills.

The Playhouse was designed solely as a play space for children by one of Philadelphia's most prominent late 19th century architects, James H. Windrim. The open layout of the 16,000 square foot three story brick and masonry structure features floor to ceiling windows, porches and room upon room with a variety of play opportunities from riding tricycles to tumbling to putting on a puppet show.

Cost: Free

Tyler Arboretum

Tyler Arboretum

515 PAINTER RD., MEDIA, PA | WWW.TYLERARBORETUM.ORG

Tyler Arboretum is a non-profit public garden in Delaware County, Pennsylvania and serves the greater Philadelphia region. Tyler is one of the oldest arboreta in the northeastern United States and encompasses 650 acres of renowned plant collections, heritage and champion trees, historic buildings and 17 miles of hiking trails through woodlands, wetlands and meadows.

Hours of Operation: (March-Oct.) Monday-Friday, 9 am-5 pm | Saturday & Sunday, 9 am-6 pm | **(Nov.-Feb.)** Monday-Friday, 9 am-4 pm | Saturday & Sunday, 9 am-5 pm

Main Features: Visit for our large sweeping landscapes, historic buildings, and 150+ year old tree specimens. Walk the Native Woodland Walk with native plants of PA Vegetable Garden, the Butterfly House exhibit (July and August). There are even goats on-site as sustainable meadow managers (through September)!

Cost: Adults (16-64): \$11, Seniors (65+): \$9, Children (3-15): \$7, Children under 3: Free





Wyck Historic House, Garden, and Farm

6026 GERMANTOWN AVE., PHILADELPHIA, PA | WWW.WYCK.ORG

Wyck is a National Historic Landmark house, garden, and farm in the Germantown neighborhood of Philadelphia that served as the ancestral home to one Philadelphia family for nine generations (1690-1973).

Here, traditional Quaker culture blended with a passion for innovation. The people who lived and worked at Wyck expressed these values through their commitment to education, horticulture, natural history, and preservation. Today, the Wyck Association connects this family and its rich history to our community through programs that focus on history, horticulture, and urban agriculture, using the past as inspiration for the present. Our 2.5-acre, centuries-old site plays an essential role in the life of our 21st-century urban neighborhood, using buildings, landscape, and collections to provide educational, cultural, and nutritional resources for our neighbors and visitors.

Hours of Operation: Thursday-Saturday 12-4 pm (April-Nov.) | Friday Farmers Market 2-6 pm (June-Nov.)

Main Features: The Wyck Rose Garden dates to the 1820's and is widely recognized as the oldest rose garden in original plan in America, with 80+ cultivars of historic roses. Included in the garden are the original rose plants from the 19th century design, as well as plants from the 18th century kitchen garden. Several roses in cultivation today were thought lost until they were discovered growing at Wyck, and all specimens of these varieties in commercial trade descend from Wyck plants.

Cost: Donation—pay what you wish

EDUCATIONAL PARTNERS



Antonelli Institute

300 MONTGOMERY AVE., ERDENHEIM, PA | WWW.ANTONELLI.EDU



www.mainlineart.org | 746 Panmure Road Haverford, PA 19041 | 610.525.0272

At Antonelli, you'll be surrounded by other passionate, aspiring creatives who understand what drives you to create art with a purpose.

Your instructors are all creative professionals too, so they understand the creative process and how to help you create your best work.

Educational Opportunities: Our Photography and Graphic Design programs are: 1) Fast, so you earn your associate degree in just 21 months, so you can get out and begin your career. 2) Hands-on, so you can learn through professionally-inspired class projects. 3) Comprehensive and high-quality, so you can graduate with the skills needed to launch a successful creative career

For more info: www.antonelli.edu

Haverford College

370 LANCASTER AVE., HAVERFORD, PA | WWW.HAVERFORD.EDU

Haverford offers a one-of-a-kind education. There is no place where students are more trusted, are more directly engaged with their education, and have more opportunity to shape their own path.

Educational Opportunities: Haverford's small size makes possible a highly personalized, hands-on educational experience. Professors work side-by-side with students to do high-level research while also developing analytical thinking and pushing the boundaries of each discipline.

For more info: www.haverford.edu

Moore College of Art

20TH ST. AND THE PARKWAY, PHILADELPHIA, PA | WWW.MOORE.EDU

Moore College of Art & Design educates students for careers in the visual arts. Moore's faculty of creative professionals inspires and supports students to achieve their goals, passions and dreams. The vibrant Philadelphia campus is home to Moore's close-knit community. Small classes encourage collaboration and lay a solid foundation in art and design that sets the platform for a creative life.

Educational Opportunities: Students learn from award-winning, professionally active faculty who bring real-world knowledge and expertise into the classroom and encourage excellence, creative exploration and self-expression to prepare students for lifelong learning and leadership in their chosen field.

For more info: www.moore.edu



Rowan University

ROWAN UNIVERSITY ART GALLERY: 301 HIGH ST., GLASSBORO, NJ

ROWAN UNIVERSITY ART GALLERY WEST: WESTBY HALL ON RT. 322, GLASSBORO, NJ

WWW.ROWAN.EDU

Rowan University serves as a premier cultural destination for South Jersey, the Rowan community, and surrounding region. As a center for contemporary art by emerging and established professional artists from the region, nation, and global community, the gallery is committed to presenting the most current in contemporary art practices.

Educational Opportunities: Pursue your passion, develop your skill sets and prepare for your career, and life, after Rowan. With more than 80 bachelors' and 60 master's degree programs, five doctoral programs and two professional programs, our students can pursue any number of professional callings across four campuses. Our highly regarded, award-winning academic programs are taught in small classes, by faculty who are engaged with their students, connected in their fields, and invested in student achievement.

For more info: <http://www.rowan.edu/artgallery/>



The University of the Arts

320 S. BROAD ST., PHILADELPHIA, PA | WWW.UARTS.EDU

Established in 1876, the University of the Arts is one of the nation's only universities dedicated solely to educating students in the visual and performing arts and design. Our innovative, flexible approach to developing artists and designers acts as a catalyst for their creativity — they connect, collaborate and create across disciplines and traditional boundaries, in the heart of downtown Philadelphia, one of the nation's most culturally vibrant cities.

Educational Opportunities: With a broad range of undergraduate and graduate programs offered through the College of Art, Media & Design, the College of Performing Arts and the Division of Liberal Arts, our nearly 1,900 students immerse themselves in a rigorous and well-rounded curriculum that prepares them to be the creative leaders of tomorrow, no matter what field they choose.

For more info: www.uarts.edu

