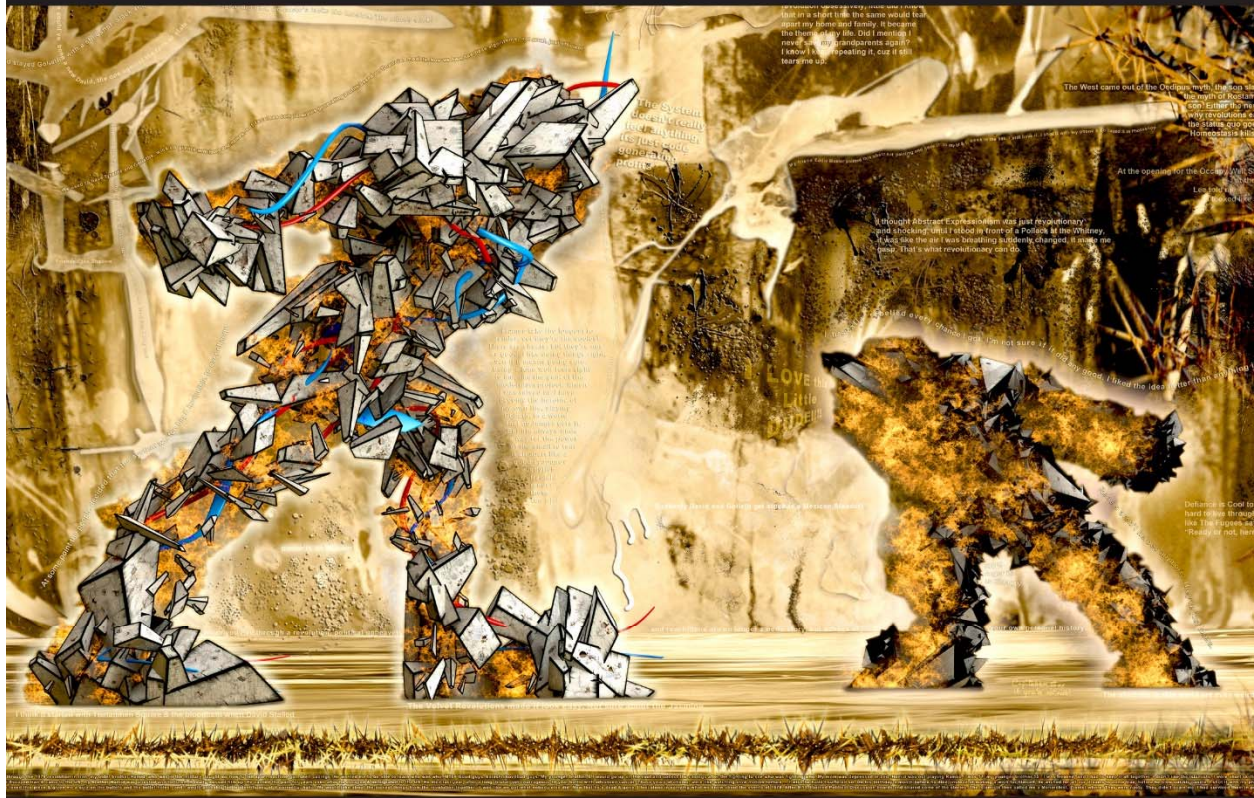


PANORAMA

MAIN LINE ART CENTER | 2015

SEPTEMBER 12 – NOVEMBER 4, 2015



MUST-DO PROGRAM GUIDE

CELEBRATING IMAGE-BASED ART IN THE 21ST CENTURY

35+ Creative Partners | 60+ Events | 2 Months

WWW.MAINLINEART.ORG/PANORAMA2015 | 746 PANMURE RD, HAVERFORD, PA | #PANORAMA2015

ABOUT PANORAMA

September 12 – November 4, 2015

Panorama: Image-Based Art in the 21st Century is the first annual Philadelphia-area celebration of the photographic image and its expansive role in contemporary mediums like digital photography, printmaking, video, film, animation, and gaming design. Anchored by Main Line Art Center's on-site exhibition *Modern Utopias*, and a dynamic and interactive evening festival on Saturday, October 24 from 5 to 9 pm, the 2-month happening features physical and virtual exhibitions, lectures, programs presented by Creative Partners, and educational offerings at Main Line Art Center led by accomplished artists who utilize digital technology to deliver the unexpected. #PANORAMA2015

Presenting Organization

Main Line Art Center | 746 Panmure Road, Haverford, PA 19041
www.mainlineart.org | 610.525.0272

Creative Partners (as of 9/8/2015)

3rd Street Gallery | Antoinette Westphal College of Media Arts & Design, Drexel University | Antonelli Institute | ArtsQuest | Bluestone Fine Gallery | Borelli's Chestnut Hill Gallery | Bryn Mawr Film Institute | Cantor Fitzgerald Gallery, Haverford College | Center for Creative Works | Center for Emerging Visual Artists | City of Philadelphia Mural Arts Program | Delaware Center for the Contemporary Arts | Gravy Studio & Gallery | InLiquid Art & Design | Institute of Contemporary Art | James Oliver Gallery | Lansdowne Arts & Music Festival | Longwood Gardens | Manayunk-Roxborough Art Center | NAPOLEON | Painted Bride Art Center | Paradigm Gallery + Studio | Pentimenti Gallery | Philadelphia Art Alliance | Philadelphia's Art in City Hall | Philadelphia Game Lab | Philadelphia Independent Film Festival | Philadelphia Photo Arts Center | The Photo Review | The Print Center | Rowan University | Scribe Video Center | Silicon Gallery Fine Art Prints | Space 1026 | University of the Arts: Gallery 1401, Rosenwald-Wolf Gallery, and Sol Mednick Gallery | Vox Populi | West Laurel Hill Cemetery | WP Gallery

Business Partners (as of 9/8/2015)



www.mainlineart.org | 746 Panmure Road Haverford, PA 19041 | 610.525.0272

EVENTS | MAIN LINE ART CENTER



Featured Exhibition: *Modern Utopias*

September 12 – November 4, 2015 | #MODERNUTOPIAS

Artist Talk & Opening Reception: Friday, Sept. 18, 5:30-8:30 pm | FREE

The focal point of *Panorama 2015*, *Modern Utopias* presents compelling visions of modern existence, human potential, and virtual realities through works by **Marjan Moghaddam** (New York, NY), **Noah Addis** (Columbus, OH), and **Nicole Patrice Dul** (Philadelphia, PA). The artists cleverly investigate modern culture, international politics, and existential dilemmas through the camera lens, printed imagery, and digital technology. Reaching for the sublime, these artists invite viewers to interact with and respond to notions of utopia while defining personal visions of the future.



Featured Event: *Panorama Festival & Digital Art Presentation*

Saturday, October 24, 5-9 pm | FREE | #PANORAMAFESTIVAL2015

Virtual and hands-on collide at Main Line Art Center during this dynamic and interactive festival featuring music and entertainment, food trucks, live art experiences, innovative art-making, digital demos, and more. Artist **Tim Portlock** will light up the night with a presentation of site-specific digital artwork, kicking-off Main Line Art Center's new Artist in Residency Program.



www.mainlineart.org | 746 Panmure Road Haverford, PA 19041 | 610.525.0272

Additional Events at Main Line Art Center

- **Artist Workshop: Intro to Solarplate Etching with Nicole Patrice Dul:** Tues., Sept. 29 & Oct. 6, 6:30-9:30 pm | \$85 M/\$94 NM | Register at www.mainlineart.org
- **Lecture: The Printed Image: 100 Years of Print in Philadelphia with The Print Center:** Tues., Oct. 13, 5:30-7 pm | \$10 | Register at www.mainlineart.org
- **Portfolio Reviews by MLAC Artistic Advisors:** Sat., Oct. 24, 1-4 pm | \$95 | Register to have your work reviewed by experts in the field at www.mainlineart.org
- **Panorama Virtual Exhibition: Mytopia:** December | mainlineart.org | #MYTOPIA

BE A PART OF PANORAMA!

Submit Your Work to Mytopia Virtual Exhibition | Featuring Cash Awards

Feeling inspired by all things Panorama? Us too!
Here's YOUR chance to be a part of Panorama: Image-Based Art in the 21st Century.

Beginning September 12, everyone, regardless of age, ability, or experience, is invited to submit digital photos, videos, or animations to Mytopia, a virtual exhibition which will be on view on Main Line Art Center's brand new website in December. Cash awards will be given to one adult artist and one youth artist selected as Best in Show.

CALL FOR ENTRIES DETAILS

Submission Dates:
September 12-November 4

Submission URL:
www.mainlineart.org/panorama2015

Theme: Mytopia: Artists of all ages are encouraged to create their own visions of utopia and investigate how modern existence leads to future realities. What does utopia mean to you?

Exhibition On View: Beginning December, 2015

Works will be pre-screened by Main Line Art Center prior to being published online.
For file specifications and more info, visit www.mainlineart.org/panorama2015



www.mainlineart.org | 610.525.0272
#PANORAMA2015 | #MYTOPIA

Michael and Alex © Nick Cassway 2011

Call For Entries: Mytopia Virtual Exhibition

Everyone, regardless of age, ability, or experience, is invited to submit digital photos, videos, or animations to Mytopia, a virtual exhibition which will be on view on this website in December. Cash awards will be given to one adult artist and one youth artist selected as Best in Show.

Theme: Mytopia: Artists of all ages are encouraged to create their own visions of utopia and investigate how modern existence leads to future realities. What does utopia mean to you?

Submission Details: Complete the form on www.mainlineart.org and then reply to the confirmation email with your digital artwork attached. Only 1 submission per artist, and your JPG or TIFF file should be no larger than 3 MB. If you are submitting video or animated GIFs, first upload your content to YouTube, Vimeo, or another video sharing website, and reply to our confirmation email with the hyperlink. Works will be pre-screened by Main Line Art Center prior to being published online in December.



EVENTS | CREATIVE PARTNERS

Dates and times subject to change. Please contact Creative Partners directly for more information or to confirm program details.



3rd Street Gallery

45 N. 2ND ST., PHILADELPHIA, PA | WWW.3RDSTREETGALLERY.COM

Founded in 1972, 3rd Street Gallery is one of the oldest artist run cooperatives in Old City, Philadelphia. What does "cooperative" mean? Besides working in their studios to create work for the gallery's exhibitions, our artists volunteer time and effort, taking on additional jobs to keep the day-to-day operations of our space running smoothly.

We stand for a quality presentation and experience of the visual arts, while allowing for experimentation and risk not always possible in commercial galleries. Our primary mission is to engage the public with insightful and challenging creative works and to support the positive growth of the visual arts in the region.

Our members vary widely in formal education, age and artistic medium which allows us to stay dynamic and continually learn from each other. Every year we throw open our doors to our community and neighborhood, inviting everyone to show their work in the gallery. For 42 years we have embraced the collective model to cultivate unique relationships between artists and their community.

Hours of Operation: Wednesday - Sunday 12-5 pm



Facades of Anonymity #5 © Neil Marcello



POST: 5th Annual Member Exhibition: Oct. 1-Nov. 1, 2015

Annex Exhibit- POST Spotlight on Photo and Digital Arts: Oct. 1-Nov. 1, 2015

First Friday Hours: Oct. 2, 2015, 5-7 pm

Artist Reception: Oct. 4, 2015, 1-4 pm

This group show will feature work from all of the artist members of our cooperative gallery during POST (Philadelphia Open Studio Tours). We will have a special exhibit within our annex space that spotlights those members who use photo and digital technologies unique to their art.

Cost: Free

For more info: <http://www.3rdstreetgallery.com/exhibitions/2015/post-5th-annual-member-exhibition>



Antoinette Westphal College of Media Arts & Design, Drexel University

DREXEL UNIVERSITY, 3141 CHESTNUT ST., PHILADELPHIA, PA | WWW.DREXEL.EDU/WESTPHAL

Drexel's Antoinette Westphal College of Media Arts & Design teaches design, media, and the performing arts in a different way. Eighteen undergraduate and six graduate degree programs are taught by faculty at the top of their fields in experiential and hands-on learning environments. We empower students with the knowledge, skills, and confidence to succeed in highly competitive creative fields. Westphal's image-based undergraduate degree majors include Photography, Interactive Digital Media, Game Design & Production, Animation & Visual Effects, Graphic Design and Film & Video.



Antonelli Institute

300 MONTGOMERY AVE., ERDENHEIM, PA | WWW.ANTONELLI.EDU

Print Competition and Design Competition Gallery: Sept. 2-Oct. 30, 2015

Each year the Antonelli Institute of Graphic Design & Photography holds a huge student photography and design competition. Students can enter two prints that they print and mat themselves into each category, which includes landscape, photojournalism, commercial, editorial, fashion, portraiture, and others. From there, the faculty judges narrow it down to the top 12 in each category. Those 12 are then judged by outside



www.mainlineart.org | 746 Panmure Road Haverford, PA 19041 | 610.525.0272

professionals that include professional photographers and alumni, who rank them and then pick best of show, which is awarded The Sunset Print Award winner. Students may enter two pieces into each Design Competition category, which includes; brand identity, brochure design, packaging, poster design, infographic design, illustration, web design, and drawing and painting. Faculty pre-judge the work down to a top ten and professional designers award a top four in each category and best of show.

Cost: Free

For more info: www.antonelli.edu



Art in City Hall

1400 MARKET ST., PHILADELPHIA, PA | WWW.CREATIVEPHL.ORG

Art In City Hall presents exhibitions that showcase contemporary artwork by emerging and professional visual artists from the Philadelphia region. Encompassing a variety of mediums, techniques, and subjects, this municipal program is committed to presenting a diversity of ideas and artistic explorations. The program strives to link visual artists with the larger community by providing the public with a greater knowledge and appreciation of their artistic achievements.

Hours of Operation: Monday-Friday 10 am- 4 pm | Closed weekends and holidays

A Print in Time: Oct. 19-Dec. 11, 2015

A Print in Time will be a selection of works juried by multi-disciplinary artist Amze Emmons. The exhibit asks artists to contribute a series of prints that create a narrative or body of work. A series can be defined as a body of work with a central concept or narrative. A narrative can be left open to interpretation, and may not necessarily reflect representational work. All traditional printmaking techniques such as lithography, woodcut, intaglio, etc. are eligible; as well as mixed media, photography, and works that explore the concept of making prints. *A Print in Time* coincides with The Print Center's citywide centennial celebration.

Cost: Free

For more info: www.creativephl.org

More Than One - Publications by The Print Center: Oct. 19 – Dec. 11, 2015

The Print Center has for many years carried on a program of print publications, identifying and encouraging both established and promising artists by commissioning fine limited edition prints. *More Than One - Publications by The Print Center* includes a selection of prints, photographs, and books commissioned by The Print Center over its first 100 years. The exhibit is part of *The Print Center 100* celebrations.



www.mainlineart.org | 746 Panmure Road Haverford, PA 19041 | 610.525.0272

Cost: Free

For more info: www.creativephl.org



ArtsQuest

101 FOUNDERS WAY, BETHLEHEM, PA 18015 | WWW.ARTSQUEST.ORG

ArtsQuest is a 501(c)(3) nonprofit organization engaging and revitalizing communities through the arts. ArtsQuest owns and operates the ArtsQuest Center at SteelStacks and the Banana Factory Arts Education Center in Bethlehem, PA, and is the nonprofit behind the nation's largest free music festival, Musikfest®. Through the support of donors, members, corporate partners, and volunteers, ArtsQuest's annual programming impacts the lives of over one million people annually and drives more than \$100 million in economic development for the region.



Hours of Operation: Monday-Wednesday 6:30-9 pm | Thursday 4-11 pm | Friday 4-12 am | Saturday 11 am-12 am | Sunday 12 pm-9 pm

Olympus InVision Photo Festival: Nov. 6-8, 2015

ArtsQuest is hosting its 6th annual *Olympus InVision Photography Festival* November 6-8, 2015. *InVision* is a festival highlighting nationally and internationally-known photographers as well as emerging artists. During the festival, photographers from the tri-state area and beyond come together to enjoy a weekend of workshops, lectures, exhibition openings, and more!

Cost: Free, Some paid events

For more info: <http://www.bananafactory.org/events/olympus-invision-photo-festival/>

Image: Courtesy of the Banana Factory



www.mainlineart.org | 746 Panmure Road Haverford, PA 19041 | 610.525.0272



Bluestone Fine Art Gallery

142 N. 2ND ST., PHILADELPHIA, PA | WWW.BLUESTONE-GALLERY.COM

Bluestone Fine Art Gallery features original works by contemporary and traditional artists in a range of mediums. Our artists hail from Philadelphia and around the country. Our goal is to showcase engaging works in a welcoming atmosphere.

Hours of Operation: Monday - Friday 10 am-5 pm | Saturday 12-4 pm



The City of Love © Ekaterina Ermilkina

The City of Love: Solo Show by Ekaterina Ermilkina: Sept. 4-Oct. 23, 2015

Ekaterina Ermilkina's original abstract fine art paintings are created using a skillful combination of applying and removing oil paint with a palette knife on canvas. Many of her inspirations are based on photographs of historical places and skylines, while others are based on expressionistic imaginary skylines of major cities. The urban scenic views are abstracted and rich with vivid and textured layers. Ekaterina's emotional architectural patchwork and mosaic cityscapes radiate a life of balance and positive energy. *The City of Love Exhibition* includes new original artworks based on Philadelphia and other large cities around the country.

Cost: Free

For more info: <http://bluestone-gallery.com/featured-artists/ekaterina-ermilkina>



www.mainlineart.org | 746 Panmure Road Haverford, PA 19041 | 610.525.0272



Borrelli's Chestnut Hill Gallery

8117 GERMANTOWN AVE., PHILADELPHIA, PA | WWW.CHESTNUTHILLGALLERY.COM

Borrelli's Chestnut Hill Gallery features a wide variety of artists from the traditional to the more contemporary. We are delighted to represent many renowned, well-established artists, but also are proud to provide a place for new and emerging artists to showcase their talent. All works are for sale.

Hours of Operation: Sunday 12-4 pm | Tuesday-Friday 10 am-6 pm | Saturday 10 am-5 pm



Mummers © Anne Saint Peter

Anne Saint Peter Showcase: Sept. 1-Nov. 3, 2015

Borrelli's Chestnut Hill Gallery features a showcase of the work of photographer Anne Saint Peter and her innovative approach to the presentation of photographs in a contemporary way. All photographs are printed on aluminum or fine metal sheets. Saint Peter takes scenes of Philadelphia and New York City and manipulates them in her own sort of panorama to create an original image.

Cost: Free

For more info: www.annesaintpeter.com

BRYN MAWR **FILM INSTITUTE**

Bryn Mawr Film Institute

824 LANCASTER AVE., BRYN MAWR, PA | WWW.BRYNMAWRFILM.ORG

Bryn Mawr Film Institute (BMFI) is a nonprofit, member-supported motion picture theater and film education center located in Bryn Mawr, PA. BMFI is dedicated to promoting



www.mainlineart.org | 746 Panmure Road Haverford, PA 19041 | 610.525.0272

shared experiences that entertain, engage, and educate audiences through a diverse range of independent-minded films, a full curriculum of courses, and an extensive program of special events. BMFI builds community through film culture, while maintaining strong connections to its historic venue's cinematic past.

Hours of Operation: BMFI shows a variety of films and programs seven days a week. The Box Office opens 30 minutes before the first show of the day. Check BrynMawrFilm.org for accurate listings.



Courtesy of Bryn Mawr Film Institute

Fabergé: A Life of Its Own Film Screening: Sept. 16, 2015, 7-8:30 pm

This captivating new film tells the fascinating story behind the most prestigious name in luxury: Fabergé. Enjoying unprecedented access to the most esteemed private collections, insights from world experts, and interviews with the descendants of the Fabergé family, this is a rare opportunity to discover the genius of the family behind the finest objects ever created. The special cinematic event will feature exclusive access to two new, historic pieces.

Cost: \$20 for general admission, \$18 for BMFI members, \$10 for students with ID

For more info: <http://brynmawrfilm.org/films/?id=1540>



Avatar (2007), 20th Century Fox Courtesy of Bryn Mawr Film Institute

BMFI Film Course: Fantastic Realms: Oct. 5-26, 2015, 6:30-9:30 pm

We spend an extraordinary amount of time in imaginary worlds and fictional realms. Movie worlds, in particular, have the potential to transport us to other places and times that we could not normally encounter. This course will look at the design and structure of imaginary worlds and how they appeal to the armchair anthropologist in all of us. This BMFI film course meets on four Mondays, beginning October 5, from 6:30 to 9:30 pm.



Cost: \$125 for public tuition, \$100 for BMFI member tuition

For more info: <http://brynmawrfilm.org/education/class.php?id=1575>



Cantor Fitzgerald Gallery, Haverford College

WHITEHEAD CAMPUS CENTER, HAVERFORD COLLEGE, 370 LANCASTER AVE., HAVERFORD, PA

WWW.HAVERFORD.EDU

An integral part of the John B. Hurford '60 Center for the Arts and Humanities, the Cantor Fitzgerald Gallery is the principal venue for the Haverford College Exhibitions Program, which aims to extend cultural literacy through the display and analysis of work across visual and material media. Envisioning exhibition spaces as active workshops for the exploration of visual culture, the Exhibitions Program partners with faculty, students, and visiting curators to design exhibitions that connect curricular interests and scholarship with contemporary artistic practice. In so doing, the Exhibitions Program encourages intellectual inquiry and artistic innovation in the Haverford community and greater Philadelphia region. For more information, visit haverford.edu/exhibits

Hours of Operation: Monday -Friday 11 am-5 pm | Saturdays-Sundays 12-5 pm | Wednesdays open until 8 pm



Cité Espérance #2, Route de Bingerville, 2013 ©François-Xavier Gbré

François-Xavier Gbré: *The Past is a Foreign Country*: Aug. 28-Oct. 9, 2015

How is a country's national story told through its architecture? When should the structures of the past be dispensed for the future? *The Past is a Foreign Country* is the first solo exhibition in North America by the Ivorian artist François-Xavier Gbré, whose photographs survey relics of the built environment, from the ruins of colonial-era monuments to the futurist symbols of the cosmopolitan city. The exhibition features site-



www.mainlineart.org | 746 Panmure Road Haverford, PA 19041 | 610.525.0272

specific installations of immersive wallpaper prints and a chronicle of more than fifty buildings and civic structures throughout West Africa and France. United by a methodical, often distanced perspective on architecture and landscape as a form of documentary evidence, Gbré's images summon the personal experience of public space and the social aspirations encoded in concrete, rebar, clay, and dust.

Cost: Free

For more info: exhibits.haverford.edu/thepastisaforeigncountry

Gallery Talk with Curator Brendan Wattenberg and Artist François-Xavier Gbré: Sept. 4, 2015, 4:30-7:30 pm

Gallery Talk with Curator of *The Past is a Foreign Country* Brendan Wattenberg and Artist François-Xavier Gbré. Gallery Talk: 4:30 pm–5:30 pm. Opening Reception: 5:30 pm–7:30 pm.

Cost: Free

For more info: exhibits.haverford.edu/thepastisaforeigncountry



Center for Creative Works

241 E. LANCASTER AVE., WYNNWOOD, PA | WWW.CENTERFORCREATIVESWORKS.ORG

The Center for Creative Works is a unique art studio for adults with developmental disabilities. Staffed by working artists, CCW focuses on fostering proficiency, autonomy, and individual expression with a variety of professional art materials. Our studio offers access to ceramics, wood working, weaving, embroidery, painting, drawing, mixed-media sculpture, music, and film. We encourage the professional development of our artists, offering professional support, national gallery exhibition opportunities, portfolio development, and an in-house gallery with bi-monthly installations. Check us out on Facebook: <http://www.facebook.com/centerforcreativeworks>

Hours of Operation: Monday-Friday, 8:30 am-2:30 pm





(left) *Underwater Plate* © John Serrano (right) *The Garden* © Vinetta Miller

In the Parlor: Vinetta Miller and John Serrano: Sept. 11-Nov. 6, 2015

Opening Reception: Sept. 11, 2015, 4-6 pm

For most of us, Michelangelo, Seurat, Degas, Rembrandt, and Van Gogh are household names because their work is available in photographic reproduction, rather than readily available in the flesh. The ever-presence of prints and photocopies allows for a kind of ownership of the artwork, and allows artists to interact with the images on a personal level.

Over the past two years, artists Vinetta Miller and John Serrano have worked from the figurative work of old masters, re-interpreting them in their own hand. Serrano's ability to distill and capture intense expression is clearly communicated in a series of pencil sketches of nudes, while Miller's more atmospheric approach to paint conveys a hazy, dreamlike environment for her characters.

In the Parlor: Vinetta Miller and John Serrano is an installation of these new interpretations of old master portraits. Displayed in traditional salon-style, the work conveys a contemporary take on the classical figure.

Cost: Free

For more info: <https://ccwexhibitions.wordpress.com/2015/09/02/parlour/>



Center for Emerging Visual Artists

237 S. 18TH ST., #3A, PHILADELPHIA, PA | WWW.CFEVA.ORG

The mission of The Center for Emerging Visual Artists is to coordinate a strong regional support system for visual artists, to advance the careers of professional artists in the



www.mainlineart.org | 746 Panmure Road Haverford, PA 19041 | 610.525.0272

region, to promote relationships between artists and the communities in which they live, and to increase access to and promote interest and understanding of visual art among citizens of the community.

Hours of Operation: Monday-Friday 11 am-5 pm | All other times by appointment



Pig © Lydia Panas

Falling from Grace... An Exhibition Featuring CFEVA Fellow Lydia Panas: Oct. 4-Nov. 13, 2015

Opening Reception: Oct. 8, 2015, 5-7 pm

CFEVA Fellow Lydia Panas draws from the paintings of the Dutch Golden Age, creating this series of psychological portraits that speaks to expectations and uncertainty in relationships. Together the photographs in this series present a feast: fruit, vegetable, meat, fish, cake. Despite a forthright appearance the images suggest a tension. We are not sure how to receive their expressions. The faces are vague and uncommitted. It is not clear if the models offer or withhold. These portraits connect and disengage simultaneously, proposing a precarious intimacy. *Falling from Grace* is a Philadelphia Open Studios Tour Featured Exhibition.

Cost: Free

For more info: <http://www.philaopenstudios.org/events/phl-open-studio-tour-events/fallingfromgrace>

City of Philadelphia MuralArtsProgram

City of Philadelphia Mural Arts Program

1729 MT. VERNON ST., PHILADELPHIA, PA | WWW.MURALARTS.ORG

The City of Philadelphia Mural Arts Program is the nation's largest public art program, dedicated to the belief that art ignites change. For 30 years, Mural Arts has united artists and communities through a collaborative process, rooted in the traditions of mural-making, to create art that transforms public spaces and individual lives. Mural Arts engages communities in 50-100 public art projects each year, earning Philadelphia's international recognition as the "City of Murals."



www.mainlineart.org | 746 Panmure Road Haverford, PA 19041 | 610.525.0272

Hours of Operation: 24/7



Pyramid © 2015 Jonathan Monk. Paine's Park. Photo by Steve Weinik

Open Source: Engaging Audiences in Public Space: Oct. 1-31, 2015

Open Source: Engaging Audiences in Public Space is a citywide exhibition that will bring 14 extraordinary artists from around the world to Philadelphia. They will work with the City of Philadelphia Mural Arts Program and guest curator Pedro Alonzo to create a new series of public artworks that explore and illuminate Philadelphia's diverse urban identity.

Cost: Free

For more info: <http://opensource.muralarts.org/>



Delaware Center for the Contemporary Arts

200 S. MADISON ST., WILMINGTON, DE | WWW.THEDCCA.ORG

The Delaware Center for the Contemporary Arts is a dynamic gathering place for the exploration of new ideas at the intersection of art, design, and technology, providing access to the artistic process that inspires us to infuse creativity into our daily lives. The DCCA presents nearly 30 compelling exhibitions annually of regionally, nationally, and internationally recognized artists, as well as innovative arts education through on-site classes, summer camps, and partnerships with community groups and schools.

Hours of Operation: Tuesday, Thursday, Friday, Saturday 10 am-5 pm | Wednesday, Sunday 12-5 pm



www.mainlineart.org | 746 Panmure Road Haverford, PA 19041 | 610.525.0272



Endangered Seasons installation view #3, DCCA © Amie Potsic 2015

New Eyes: Experimental Photography Today: May 28-Oct. 25, 2015

The DCCA's 2015 Annual Members' Juried Exhibition, *New Eyes: Experimental Photography Today*, juried by artist and photographer [Jim Graham](#), examines contemporary art at the intersection of digital photography and new media technologies. The exhibition features works by Amie Potsic, Brian Wagner, Chris Macan, David Heitur, Delona Seserman, Jason Leshem, [Jeffrey Rubin](#), Julia Staples, Mark Winicov, Mary Targonski, Michael Melloy, and Nancy Breslin, and includes innovative techniques like archival pigment print on silk panels (Potsic), looping HD video projection (Wagner), dye-infused metal print in reclaimed wood (Macan), and archival giclée print mounted on aluminum (Rubin).

Cost: Free

For more info: <http://www.thedcca.org/exhibit/new-eyes-experimental-photography-today>



Plaid Shakespeare (Book Wraps) © Milana Braslavsky 2014

Nature Morte: Solo Show by Milana Braslavsky: Sept. 19, 2015-Jan. 31, 2016

Nature Morte is a solo exhibition by Baltimore-based artist Milana Braslavsky exploring the practice of contemporary still-life photography. Braslavsky elevates quotidian objects, mined from her family's belongings, by using minimal compositions and palettes. Historically, still lifes are known for their symbolism, and a sense of play and allegory emerge in Braslavsky's photographic series of mysteriously wrapped books and other objects.

Cost: Free

For more info: <http://www.thedcca.org/exhibit/nature-morte>





Gravy Studio & Gallery

155 CECIL B. MOORE AVE., PHILADELPHIA, PA | WWW.GRAVY-STUDIO.COM

Gravy Studio & Gallery is a collaborative photography workspace and gallery located near the Frankford Arts Corridor. Our goal is to serve as a multi-functional space that promotes the work of local photographers.

Hours of Operation: Opening receptions are held on the First Friday of every month. Additional hours vary. Please contact us to schedule an appointment or for more information.



Summer Indeed © Lendl Tellington 2015

Back to School: Photographs by Sarah Milinski, Lendl Tellington, Sahar Coston-Hardy and Marco Hill: Sept. 4-30, 2015

Back To School is a collection of documentary photography capturing the students, parents, teachers and spaces of Philadelphia's underfunded School district. The exhibit looks at the toll a budget-stricken school district has on Philadelphia's communities, as well as highlights the people who are working to change what has been called one of the nation's most inequitable school systems.

Cost: Free

For more info: www.gravy-studio.com



www.mainlineart.org | 746 Panmure Road Haverford, PA 19041 | 610.525.0272



© Jorj Bauer

Eye of the Beholder: Photographs by Jorj Bauer: Oct. 2-31, 2015

Eye of the Beholder is a study in alternative photography that examines how the print itself shapes the viewer's reception of a story. Mediums include palladiotype, carbon, and casein bichromate on glass.

Cost: Free

For more info: www.gravy-studio.com

INLIQUID™ **art+DESIGN**

InLiquid Art & Design

INLIQUID: 1400 N. AMERICAN ST., #314, PHILADELPHIA, PA | WWW.INLIQUID.ORG

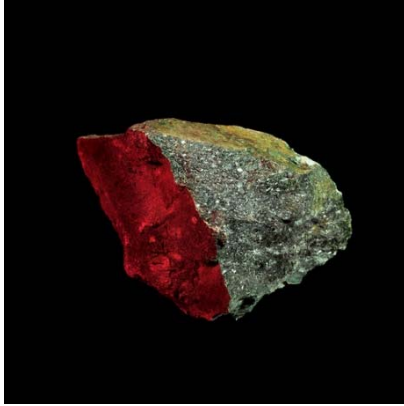
PIPELINE PHILLY: THE GRAHAM BUILDING 30 S 15TH STREET, 15TH FLOOR, PHILADELPHIA, PA

InLiquid is a 501(c)(3) nonprofit organization committed to creating opportunities and exposure for visual artists while serving as a free, online public hub for arts information in the Philadelphia area. By providing the public with immediate access to view the portfolios and credentials of over 270 artists and designers via the internet; through meaningful partnerships with other cultural organizations; through community-based activities and exhibitions; and through an extensive online body of timely art information, InLiquid brings to light the richness of our region's art activity, broadens audiences, and heightens appreciation for all forms of visual culture.

Hours of Operation: 9 am-5 pm



www.mainlineart.org | 746 Panmure Road Haverford, PA 19041 | 610.525.0272



Terrene 001-69 © Jaime Alvarez

In Time: Contemporary Photography at Pipeline Philly: Sept. 10-Dec. 31, 2015

InLiquid presents *In Time*, featuring four artists incorporating time into the photographic process. Through the photographic lens, Time is revealed in movement, wide narratives of layered imagery, and through the vast scope of Earth's natural processes. Artists include: Jaime Alvarez, Mallary Johnson, Neila Kun, Geanna Merola.

In celebration of the 100th anniversary of The Print Center, *In Time* offers a photographic reflection upon the nature of time passing.

Cost: Free

For more info: www.inliquid.org

I
C
A

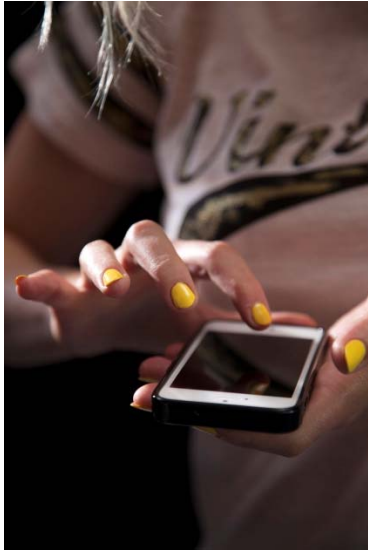
Institute of Contemporary Art

118 S. 36TH ST., PHILADELPHIA, PA | WWW.ICAPHILA.ORG

The Institute of Contemporary Art at the University of Pennsylvania believes in the power of art and artists to inform and inspire. The ICA is free for all to engage and connect with the art of our time.

Hours of Operation: Wednesday 11 am–8 pm | Thursday & Friday 11 am–6 pm
| Saturday & Sunday 11 am–5 pm | Monday & Tuesday Closed





Here Do You Want To © Josephine Pryde

Josephine Pryde: lapses in Thinking By the person i Am: Sept. 16-Dec. 27, 2015

Josephine Pryde (b. 1967, Alnwick, UK; lives Berlin and London) presents a new body of commissioned work for her first US museum exhibition. In the context of the gallery, it could be said that the composition, lighting and general style of Pryde's photographs recall fashion and portrait photography, but this would be to ignore the fact that fashion and portrait photography could be said to refer to art photographs, to snapshots, to documentary footage, and more. A kind of loop develops in Pryde's work, feeding back tropes and mutations in photographic traffic, and then presenting the results.

Cost: Free

For more info: <http://icaphila.org/exhibitions/7462/josephine-pryde-lapses-in-thinking-by-the-person-i-am>

Conversation: Josephine Pryde with Mathieu Malouf: Nov. 18, 2015, 6:30-8 pm

Artist Josephine Pryde and her interlocutor Mathieu Malouf will ruminate on Pryde's photography. At ICA, British artist Josephine Pryde presents a new body of work: more than twenty photographs of hands shot with a macro lens so that detail can be enlarged in the final frame. The hands have brightly painted nails and are depicted in contact with a range of touch sensitive devices—lamps, tablets, phones, and human chests.

Cost: Free

For more info: <http://icaphila.org/programs>





James Oliver Gallery

723 CHESTNUT ST., 4TH FL., PHILADELPHIA, PA | WWW.JAMESOLIVERGALLERY.COM

A unique contemporary loft-style art gallery nestled in the heart of the historic area, above the world-famous Morimoto Restaurant. James Oliver Gallery features local, national, and international artists in the realm of painting, sculpture, mixed media, photography, and installation works. Recognized by such notables as NPR and Huffington Post.

Hours of Operation: Wednesday-Friday 6-8 pm | Saturday 12-6 pm | Sunday-Tuesday by appointment only



Enchanted Forest #2 © Amie Potsic 2015

Enchanted Forest: Solo Show by Amie Potsic: Oct. 24-Dec. 5, 2015

Opening Reception & Artist Talk: Nov. 7, 2015, 6-10 pm

James Oliver Gallery presents: *Enchanted Forest*, a solo exhibition featuring renowned photographer and installation artist Amie Potsic. Her works reference the sensory experience of being within the forest while encouraging us to appreciate and preserve its future. Potsic's incarnate environmental explorations entice the viewer to connect with their own perception of nature in a manner that is simultaneously intimate and enchanting. We invite you to experience these captivating and attractive works as she transforms our contemporary and modern loft-style space located in historic Philadelphia. During the artist reception, Potsic will speak to the audience on her work beginning at 7pm.

Cost: Free

For more info: <http://www.jamesolivergallery.com/future/>



www.mainlineart.org | 746 Panmure Road Haverford, PA 19041 | 610.525.0272



Lansdowne Economic Development Corporation

84 S LANSDOWNE AVE., LANSDOWNE, PA | WWW.LANSDOWNEARTSFESTIVAL.COM

Lansdowne Economic Development Corporation partners with local government, business owners, and community groups to generate economic activity and encourage investment in Lansdowne.

Hours of Operation: Monday-Friday 9 am-4 pm | Lansdowne Arts & Music Festival on September 12 & 13, 10 am-5 pm daily



Lansdowne Arts and Music Festival: Sept. 12-13, 2015

The 13th Annual edition of the Lansdowne Arts & Music Festival takes place September 12-13. The weekend long event draws attendees from throughout the region and beyond which showcases Lansdowne as a community abundant in arts and culture.

Cost: Free

For more info: www.lansdowneartsfestival.com



LONGWOOD
GARDENS

Longwood Gardens

1001 LONGWOOD RD., KENNETT SQUARE, PA | WWW.LONGWOODGARDENS.ORG

In 1906, industrialist Pierre du Pont (1870-1954) purchased a small farm near Kennett Square, PA, to save a collection of historic trees from being sold for lumber. Today, Longwood Gardens is one of the world's great horticultural displays, encompassing 1,077 acres of dazzling gardens, woodlands, meadows, fountains, 10,010-pipe Aeolian organ and 4.5-acre conservatory. Longwood continues the mission set forth by Mr. du Pont to inspire people through excellence in garden design, horticulture, education, and the arts, through programming that includes exhibitions, musical performances by leading artists, renowned horticulture education programs, horticulture research, environmental stewardship and community engagement.



www.mainlineart.org | 746 Panmure Road Haverford, PA 19041 | 610.525.0272

Hours of Operation: Longwood opens daily at 9 am. The Gardens are open for *Nightscape* Wednesday-Saturday evenings from 6-11 pm (special ticket required).



Photo courtesy of Longwood Gardens/H. Davis

Nightscape: A Light and Sound Experience by Klip Collective: Sept. 1-Oct. 31, 2015
Longwood Gardens' new nighttime exhibit, *Nightscape: A Light and Sound Experience by Klip Collective*, takes guests on an immersive journey around the Gardens with moving imagery, light, and original music using Longwood's plants and landscape as the canvas. Created by Klip Collective of Philadelphia, this innovative display is Klip's first garden-wide installation and will showcase never-before-seen views of Longwood at night. *Nightscape* includes nine site-specific locations, with each experience inspired by and related to the Gardens. Locations include the Rose Arbor, Large Lake, Flower Garden Walk, Topiary Garden, the grand Conservatory, and more.

Cost: \$27

For more info: <http://longwoodgardens.org/nightscape>



Manayunk-Roxborough Art Center

419 GREEN LANE (REAR) PHILADELPHIA, PA 19128 | WWW.MRARTCENTER.ORG

MRAC is an all volunteer artist/writer Co-Op committed to fostering the visual, spoken and performance arts in both the local and regional communities. The gallery hosts monthly art exhibitions featuring photography, oil/watercolor/acrylic painting, sculpture, ceramics and literary programs.

Hours of Operation: Gallery exhibitions: Saturdays and Sundays only: 11 am-3 pm.
Humanities programs and art classes vary depending on class and/or event.

Art on the Spectrum, featuring Emily Burke: Sept. 13-27, 2015

Emily Burke's drawings and paintings will be featured in an exhibit titled *Art on the Spectrum* at the Manayunk-Roxborough Art Center (MRAC) in September, along with original photography and artwork in various media by members of the Manayunk-Roxborough Artists' Co-Op. The exhibit is a fundraiser for Civic Green Special Athletes/TOPS Soccer, which promotes sports participation by young people with disabilities.

Cost: Free, donations requested but not required

For more info: www.mrartcenter.org



Image courtesy of Manayunk-Roxborough Art Center

Art Travels with the Northwest Artist Collective: Oct. 11-25, 2015

Art Travels with the Northwest Artists Collective (NAC) will feature diverse works from 8 members of this active collective of women artists, along with photography, oil, and watercolor paintings by MRAC member artists.

Cost: Free, donations requested but not required

For more info: www.mrartcenter.org

**N
POL
EON**

NAPOLEON

319 N. 11TH ST., 2L, PHILADELPHIA, PA | WWW.NAPOLEONNAPOLEON.COM

NAPOLEON is a collectively-run project space located in Philadelphia that strives to provide a platform for new work and new ideas. NAPOLEON has ten members who share the financial and managerial responsibilities of running the gallery. As we move into our fifth year of exhibitions and programming, we are interested in increased collaboration and dialogue within our group of young artists and curators.

Hours of Operation: First Fridays 6-10 pm | Saturday & Sunday 2-6 pm | Additional hours by appointment



www.mainlineart.org | 746 Panmure Road Haverford, PA 19041 | 610.525.0272



© Tamsen Wojtanowski

In the Yard; A multi-dimensional exhibition by NAPOLEON member Tamsen Wojtanowski and writer Elaine Livingstone: Sept. 4-25, 2015

For their collaborative exhibition, *In the Yard*, Wojtanowski and Livingstone call on the audience to both observe and remember. Interested in the different ways storytelling inserts itself into our daily lives and interacts with the sense of self, personal history, and identity, in the gallery the stage is set. By weaving together the written word with photographic images, the artists invite the viewer to be transported to a time and place that is not their own, yet effortlessly familiar.

Cost: Free

For more info: <http://napoleonnapoleon.com/2015/07/31/tamsen-wojtanowski-and-elaine-livingstone-in-the-yard/>



© Sascha Hughes-Caley

Unfinished Crown; A performance created by Sascha Hughes-Caley at NAPOLEON: Sept. 12, 2015, 4-6 pm

Join us In The Yard as artist Sascha Hughes-Caley responds to Tamsen Wojtanowski and Elaine Livingstone's collaborative exhibition this September at NAPOLEON.



Drawing upon her interest in the flattening effect of rehearsed language and television, Hughes-Caley works to differentiate between genuine affinity and nostalgia. In this negotiation between past and present, one character's remembered story evolves into a multiplicity of truths.

Cost: Free

For more info: www.saschahughescaley.com



© Marc Blumthal

SuperCuts; An exhibition by NAPOLEON member Marc Blumthal: Oct. 2-30, 2015
SuperCuts is an exhibition that examines representation as a means of abstraction by removing object from viewer. The installation seals off the gallery with a wall and presents a series of photo-based works through a live-feed video, staging the exhibition as an object and measuring the experience of looking. A series of performances will accompany the exhibition and explore the relationship dynamic in the 1965 Joseph Beuys performance "How To Explain Pictures To A Dead Hare."

Cost: Free

For more info: <http://www.napoleonnapoleon.com>

PAINTED BRIDE
ART CENTER

Painted Bride Art Center

230 VINE ST., PHILADELPHIA, PA | WWW.PAINTEDBRIDE.ORG

For 46 years, the Painted Bride has remained an innovative art center committed to the presentation of jazz, world music, dance, performance, and the visual arts. Our performances and exhibitions offer distinctive artists from around the world and right here in the region who are committed to creating unique artistic experiences. We are committed to the inclusion of multiple voices and work that is relevant to current social issues.



www.mainlineart.org | 746 Panmure Road Haverford, PA 19041 | 610.525.0272

Hours of Operation: Tuesday-Saturday 12-6 pm



© Deirdre Woods

Planting A Forest: Sept. 4-Oct. 19, 2015

Opening Reception: Sept. 4, 2015, 5-8 pm

Closing Reception: Oct. 2, 2015, 5-8 pm

Do you have a favorite tree or tree memory? Painted Bride Art Center has collected images from people throughout the city of Philadelphia that have captured their attention. The tree photos will fill our gallery as Philadelphia forest along with why these trees were chosen. The exhibit is part of Re-PLACE-ing Philadelphia, a project that is built on the foundation of public dialogue and interaction, using art as a lens for viewing Philadelphia's history and re-envisioning its future.

Cost: Free

For more info: www.re-PLACE-ing.org

PARADIGM
Gallery + Studio

Paradigm Gallery + Studio

746 S. 4TH ST., PHILADELPHIA | WWW.PARADIGMARTS.ORG

Established February 2010, Paradigm Gallery + Studio exhibits contemporary artwork from around the world with a focus on Philadelphia-based artists, always keeping in mind the goal of curating accessible and diverse exhibitions to connect with a wide audience in a welcoming space.

Hours of Operation: Tuesday, Thursday, Saturday 12-6 pm | By appointment 7 days a week



www.mainlineart.org | 746 Panmure Road Haverford, PA 19041 | 610.525.0272



Parallel Crossing © Jason Chen

Works by Jason Chen: Nov. 13-Dec. 12, 2015

Opening Reception: Nov. 13, 2015, 5:30-10 pm

Jason Chen is originally from GuangZhou, China. He received his BFA in Animation from the University of Arts in 2008. Jason is a Philadelphia based photographer specializing in fashion, editorial, and alternative process photography. He is the Co-Founder of Paradigm Gallery + Studio and Juggling Wolf (a film and animation production studio).

Cost: Free

For more info: <http://www.paradigmarts.org/pages/2015>



Oakies © Abby Elizabeth

"Subsidized Starvation:" Works by Abby Elizabeth: Sept. 24-Oct. 17, 2015

Opening Reception: Sept. 24, 2015, 5:30-10 pm

4th Friday Reception: Sept. 25, 2015, 5:30-10 pm

Abby Elizabeth explores modern farming and the food industry's effect on young children through iconic images. Abby creates her pieces using hundreds to thousands of grains of rice, wheat, and barley, as well as children's toys.

Cost: Free

For more info: <http://www.paradigmarts.org/pages/2015>

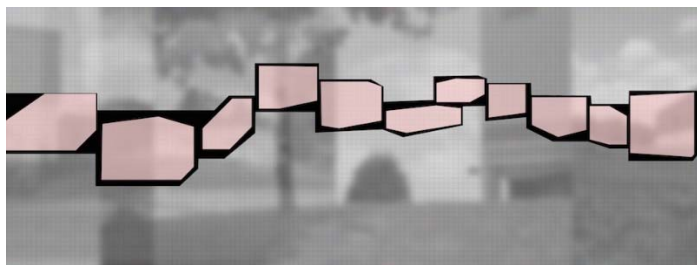


Pentimenti Gallery

145 N. 2ND ST., PHILADELPHIA, PA | WWW.PENTIMENTI.COM

Pentimenti Gallery features content driven contemporary art which challenges traditional materials and aesthetics by a line of internationally established artists alongside young talent.

Hours of Operation: Tuesday by appointment | Wednesday - Friday 11 am-5 pm | Saturday 12-5 pm



© Steve Baris

Steven Baris: *The Smoothest of All Possible Space*: Sept. 8-Oct. 17, 2015

Artist Reception: Sept. 12, 2015, 5-7 pm

Pentimenti Gallery is pleased to present *Steven Baris: The Smoothest of All Possible Space*. A mixed media solo exhibition ranging from works on canvas, mylar, plexiglass, archival prints, and installation. Each piece is in response to our expanding industrial and consumer landscape and the contraction of our rural, naturally open spaces. Steven Baris makes use of Google satellite images to map out and manipulate forms that are similar and can be found in his works.

Cost: Free

For more info: <http://www.pentimentigallery.com/steven-baris/>



Philadelphia Art Alliance

251 S. 18TH ST., PHILADELPHIA, PA | WWW.PHILARTALLIANCE.ORG

Philadelphia Art Alliance (PAA) is Philadelphia's center for contemporary craft and



design. We are an exhibition space housed in the historic Wetherill Mansion on Rittenhouse Square and we present up to twelve new exhibitions each year. We also host artist talks, exhibition tours, concerts, and workshops for adults, families and children. We also collaborate with Ars Nova Workshop and Liebesfreud on regular music performances. We welcome visitors to experience craft, not just as beautiful objects, but as a verb.

Hours of Operation: Tuesday-Friday, 11 am-5 pm | Saturday-Sunday: 12-5 pm

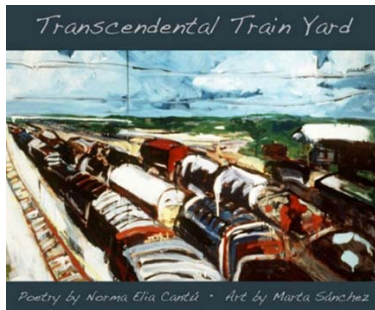


Image: Courtesy of Wings Press

Transcendental Train Yard: Oct. 25, 2015, 4-5:30 pm

Transcendental Train Yard is a new book that provides readers a glimpse of the role played by the railroad and the carpas (itinerant vaudeville troupes) in the Mexican American community in Texas. It is a collaboration between artist Marta Sanchez and poet Norma Elia Cantú. The poems and serigraph images collaboratively render images and words that poignantly reflect specific periods in that history. The prints will be on view at PAA from October 18 to November 7, and on October 25 at 4:00 pm, the artists will read and discuss their work. Books will be available for sale.

Cost: Free with admission

For more info: www.philartalliance.org



Philadelphia Game Lab

30 S. 15TH ST., 8TH FL., PHILADELPHIA, PA | WWW.PHILADELPHIAGAMELAB.ORG

Philadelphia Game Lab (PGL) is a 501 c3 non-profit organization dedicated to the growth of small-team development of creative technologies in the Philadelphia region. Through partnerships and collaborations, PGL is at the forefront of creative innovation, designing technologies that can augment and integrate a variety of user experiences



www.mainlineart.org | 746 Panmure Road Haverford, PA 19041 | 610.525.0272

through a living laboratory approach to product development and employee engagement. **Visit website for info and programs.**



Philadelphia Independent Film Festival

OFFICE: 2401 WALNUT ST., SUITE 102, PHILADELPHIA, PA |

WWW.PHILADELPHIAINDEPENDENTFILMFESTIVAL.COM

*The Philadelphia Independent Film Festival programs and screens a curated collection of local and global Independent drama, documentary, horror, sci-fi, and other genre based films at University of the Arts in Philadelphia, PA. The Festival is committed to discovering and showcasing a unique cinematic experience unrestrained by conventional boundaries. The public is invited to take part in discussions held daily at citycoho.com and streamed live on Meerkat and Periscope. **Visit website for info and programs.***



Philadelphia Photo Arts Center

1400 N. AMERICAN ST., #103, PHILADELPHIA, PA | WWW.PHILAPHOTOARTS.ORG

The Philadelphia Photo Arts Center is dedicated to supporting the study, practice, and appreciation of contemporary photography. These three pillars of PPAC's mission support the production and exhibition of new work at the leading edge of photographic practice, in-depth education, and innovative programming connecting artists with audiences, engaging them as more than just passive viewers of work, but as part of the creative process.

Hours of Operation: Tuesday-Saturday 10 am-6 pm



www.mainlineart.org | 746 Panmure Road Haverford, PA 19041 | 610.525.0272



Courtesy of Philadelphia Photo Arts Center

Greater Philly Photo Day: Oct. 9, 2015

On *Philly Photo Day*, October 9th, 2015, take a picture anywhere in the Greater Philadelphia Area, and submit your favorite one on our website. We'll print and exhibit it with hundreds of others. Select images will be displayed on transit posters throughout the region.

Cost: Free

For more info: <http://www.philaphotoarts.org/event/philly-photo-day-2015/>



Courtesy of Philadelphia Photo Arts Center

Greater Philly Photo Day Exhibition: Nov. 12-Dec. 26, 2015

PPAC will display every photograph submitted on *Greater Philly Photo Day*, October 9th, 2015.

Cost: Free

For more info: <http://www.philaphotoarts.org/event/philly-photo-day-2015/>

The
P H O T O
REVIEW

The Photo Review

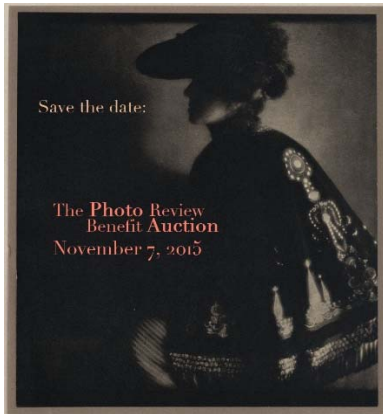
WWW.PHOTOREVIEW.ORG

The Photo Review publishes a critical journal and a newsletter of national scope and



www.mainlineart.org | 746 Panmure Road Haverford, PA 19041 | 610.525.0272

international readership. Publishing since 1976, the Photo Review covers photography events throughout the country and serves as a central resource for the Mid-Atlantic region.



Poster *Lady*© Eduard Steichen, Courtesy of The Photo Review

The Photo Review Benefit Auction: Nov. 7, 2015, 7 pm

The Photo Review will hold its Annual Benefit Auction on Saturday, November 7, 2015, at 7 pm at Hamilton Hall, University of the Arts at Broad and Pine Streets in Philadelphia, PA. The event will feature an international slate of photographers as well as a host of Philadelphia artists. In addition, a broad range of 19th-century and vernacular photographs is up for bid. Beginning and experienced collectors alike will have the opportunity to bid on work by historic masters, contemporary photo stars, and local luminaries. Prices will range from \$50 to \$7,000. A silent auction, concurrent with the live auction, will feature photography equipment and supplies, inkjet paper, museum memberships, theater tickets, books, certificates for photo classes, and more.

Cost: Free

For more info: <http://www.photoreview.org/wordpressindex/events/benefit-auction/>



The Print Center

1614 LATIMER ST., PHILADELPHIA, PA | WWW.PRINTCENTER.ORG

The Print Center, a non-profit gallery located in Philadelphia's historic Rittenhouse Square neighborhood, encourages the growth and understanding of photography and printmaking as vital contemporary arts through exhibitions, publications and educational programs.

Hours of Operation: Tuesday - Saturday 11 am-6 pm



www.mainlineart.org | 746 Panmure Road Haverford, PA 19041 | 610.525.0272



Meat Rack © Gabriel Martinez

Bayside Revisited: Solo Show by Gabriel Martinez: Sept. 18-Dec. 19, 2015

A dramatic, immersive multi-media exhibition incorporating several major new commissions, *Gabriel Martinez: Bayside Revisited* reflects on the history of Fire Island and its status as an icon of queer culture. Martinez's work has consistently addressed issues surrounding the history of gay activism. For *Bayside Revisited*, Martinez has incorporated a variety of print and photographic processes including a site-specific film installation. Martinez's use of the printed image to celebrate, memorialize and illuminate history echoes The Print Center's approach to its Centennial.

Cost: Free

For more info: www.printcenter.org



Alabama Loyalists Greeting the Federal G Boats © Kara Walker

Recollection: Sept. 18-Dec. 19, 2015

This exhibition will bring together a wide range of works by artists who use printmaking and photography to explore and document history in deeply personal ways; many of the artists have been included in past exhibitions at The Print Center. The exhibition will feature several newly commissioned printed works, as well as a video. Artists will include Walker Evans, Henry Horenstein, Dina Kelberman, Rockwell Kent, Dennis McNett, Ken Lum, Martha Madigan, Oscar Muñoz, Rochelle Toner, Kara Walker, William Earle Williams and Emma Wilcox.

Cost: Free

For more info: www.printcenter.org





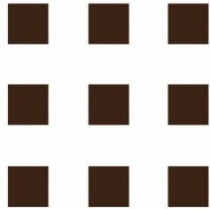
Lead Pipe Sunday © Art Spiegelman

The Print Center 100: Highlights in History: Sept. 18-Dec. 19, 2015

This exhibition will serve as the physical nexus of *The Print Center 100*, the core of our Centennial celebration. The exhibition will highlight art, ephemera, and objects drawing out our history, mission and evolution from a private club, to an internationally recognized voice in printmaking and photography.

Cost: Free

For more info: www.printcenter.org



ROWAN UNIVERSITY
ART GALLERY

Rowan University

ROWAN UNIVERSITY ART GALLERY: 301 HIGH ST., GLASSBORO, NJ

ROWAN UNIVERSITY ART GALLERY WEST: WESTBY HALL ON RT. 322, GLASSBORO, NJ

WWW.ROWAN.EDU/ARTGALLERY

As a venue that aims to present the most relevant contemporary art practices, The Rowan University Art Galleries routinely will include image based work in the form of web and internet platforms, video, animation, photography, and print making in its group and one person art exhibitions. For the Rowan community the art galleries function as an extension of the classroom for its art and design programs in 3D animation and modeling, photography, video and film, and printmaking.



www.mainlineart.org | 746 Panmure Road Haverford, PA 19041 | 610.525.0272



Scribe Video Center

4212 CHESTNUT ST., 3RD FL., PHILADELPHIA, PA | WWW.SCRIBE.ORG

Scribe Video Center, founded in 1982, is a media arts organization that provides training in all aspects of digital video, film, audio, and web-based production. Scribe offers instructional workshops to adults and youth. Scribe also works with community groups to produce media that explores issues of concern.

Hours of Operation: Monday-Friday 11 am-7 pm | 9 pm on workshop nights

Digital Media as Art by Brian Bazemore, Patrick Hebert, Nadine Patterson, John J.H. Phillips, Ken Pugh, Tieshka K. Smith, William Daniel Travis, and A.M. Weaver: Oct. 15-Dec. 15, 2015

Reception: Oct. 23, 5:30-7:30 pm

The works of these artists explore the use of digital still and moving images, together and apart: some, record, some reproduce, some create anew. Their commonality is the use of the medium of digital photography and video. Curated by Gary Smalls.

Cost: Free

For more info: www.scribe.org



Image courtesy of Scribe Video Center

Scribe Video Center's Producers' Forum Special Work-In-Progress Screening: *Spirits of Rebellion: Black Cinema at UCLA*: Sept. 15, 7 pm

Co-sponsored by the University of Pennsylvania Screening Social Justice Series, with special thanks to Josslyn Luckett and Dean John Jackson. *Spirits of Rebellion* provides intimate access to key filmmakers trained at UCLA who are identified with the movement known as the L.A. Rebellion, including Charles Burnett, Julie Dash, Haile Gerima, Barbara McCullough, Billy Woodberry and Davis herself, at work and in



www.mainlineart.org | 746 Panmure Road Haverford, PA 19041 | 610.525.0272

discussion. The film engages the origins of the name "L.A. Rebellion," the importance of public education to this group and in today's world, and the intriguing question, "What is a Black film?" Director Zeinabu Irene Davis will be in person. Screening takes place at International House, 3701 Chestnut Street, Philadelphia, PA. (USA, 2016, 90 min)

Cost: \$10, \$7 Students/Seniors, \$5 Scribe and IHP members

For more info: www.scribe.org

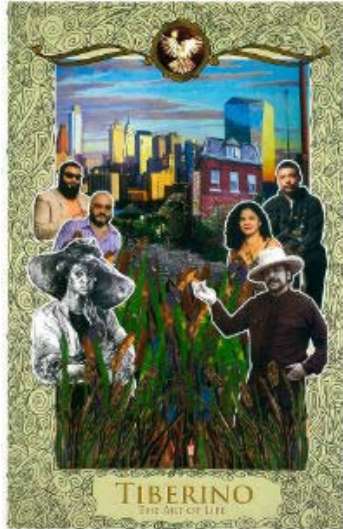


Image courtesy of Scribe Video Center

Scribe Video Center's Storyville Screening: *Tiberino: The Art of Life*: Sept. 11, 2015, 7 pm
The Tiberino family, often referred to as "The West Philly Wyeths," have been creating art in their Powelton Village neighborhood for over half a century. Joe Tiberino, his late wife Ellen Powell Tiberino, and their children have firmly established themselves in Philadelphia's art community and beyond. Produced over a three-year period, the film serves as a chronicle of the family's history as Philadelphians and artists. Directed by Derrick Woodyard and Joseph Tiberino. Film makers will be in person. Screening takes place at Scribe Video Center, 4212 Chestnut Street, Philadelphia, PA. (USA, 2015, 85 min)

Cost: Free | \$5 suggested donation

For more info: www.scribe.org



Silicon Gallery Fine Art Prints

139 N. 3RD ST., PHILADELPHIA, PA | WWW.SILICONFINEARTPRINTS.COM

Silicon, founded in 1993, was the first gallery in the USA to exclusively show work created



www.mainlineart.org | 746 Panmure Road Haverford, PA 19041 | 610.525.0272

on or influenced by the computer. In response to artists requests in 1996 Silicon purchased a state of the art digital fine art printer to produce archival prints on fine art paper. Now Silicon Fine Art Prints is the region's leading digital printmaker for artists and photographers, offering a wide range of printing, scanning and mounting services.

Hours of Operation: Tuesday-Friday 9:30 - 5:30 pm | Saturday 12-5 pm | First Friday Sept. 4 noon-5 pm



© Anna Tas (left) and Tim Portlock (right)

Virtual Still & Still Movement: Sept. 4-Oct. 31, 2015

One artist makes physically moving prints and one makes static prints from virtual spaces. Anna Tas creates her work using lenticular technology where the viewer sees physical change in the image as they pass it. Tim Portlock makes images from virtual 3D spaces which are captured from one viewpoint at a moment in time.

Cost: Free

For more info: <http://www.siliconfineartprints.com/gallery-shows.html>

SPACE 1026

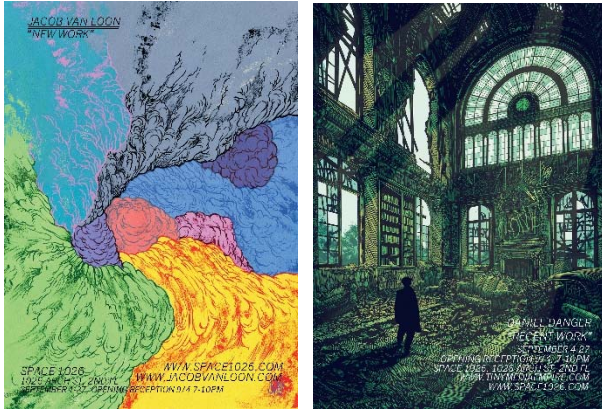
Space 1026

1026 ARCH ST., PHILADELPHIA, PA | WWW.SPAC1026.COM

Space 1026 is an 18 year experiment in collective art making. Running under the mantra/mindset of "DIY with other people," Space 1026 has carved a place in the art community but nationally and internationally by focusing on combining powers to do great things. Located in the Chinatown section of Philadelphia, Space 1026 offers monthly gallery shows for its extended artist network and every December hosts an annual art auction. Space 1026 has shown at the ICA Philadelphia, The Yerbua Beauna Center for the Arts, Cinders Gallery, and Bravin-Lee Gallery.

Hours of Operation: Please call or email in advance of visit. Gallery is open every first Friday from 7-10 pm.





© Jacob Van Loon (left) and Daniel Danger (right)

Jacob Van Loon and Daniel Danger: New and Recent Works: Sept. 4-27, 2015

Opening Reception: Sept. 4, 7-10 pm

Jacob Van Loon and Daniel Danger are illustrators and art makers with a deep commitment to line and craft. Jacob van Loon lives in DeKalb, west of Chicago. Daniel Danger is an illustrator and printmaker working out of New England.

Cost: Free

For more info: <http://space1026.com>

Philagrafika, Selected Works from Portfolio Editions 2001-2012: Oct. 2-Nov. 1, 2015

Opening Reception: Oct. 2, 2015, 7-10 pm

Featuring the work of over 20 portfolio artists; including Victoria Burge, Jim Houser, Max Lawrence, Ben Woodward, Serrena Perrone, Andrew Landau, Virgil Marti and many more. This show will feature selected works from the organizations portfolio, featuring printing by some of the most accomplished studios in Philadelphia with some of the cities finest artists.

Cost: Free

For more info: <http://space1026.com>



The University of the Arts

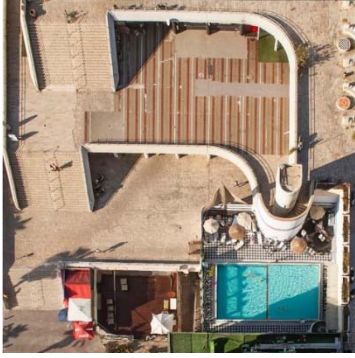
Gallery 1401

TERRA HALL, 211 S. BROAD ST., 14TH FL., PHILADELPHIA, PA | WWW.UARTS.EDU/ABOUT/GALLERY-1401

Hours of Operation: Monday-Friday 10 am-5 pm | Weekends by appointment



www.mainlineart.org | 746 Panmure Road Haverford, PA 19041 | 610.525.0272



© Zuzanna Szarek

Tel Aviv: Zuzanna Szarek: Aug. 21-Sept. 18, 2015

Created by Warsaw-based photographer Zuzanna Szarek, *Tel Aviv* is a series of 21 photographs created during seven trips to Israel between 2011 and 2014. When Szarek first came to the famous White City, she was struck by the whiteness of Bauhaus architecture. Dazzled by the magical beauty of hidden places, she gradually realized the reality of an imminent threat. Combining these states, she created her own aesthetic alphabet, envisioning places of harmony, an Eden-like landscape. In her works, she recognizes the attributes of everyday life and the urban landscape becomes art forms; treating them as the protagonists of images and street scenes, which form harmonious compositions and give a new quality to the spaces that she photographs. Although some elements are trivial in their essence, in the relationships created by the artist, they become more attractive and lose their anonymous character. She upgrades their profile to the character of Dadaist ready-mades and makes such objects as blinds or ventilation ducts create reality. In that world, man becomes a part of a series of interacting elements and plays the same role as the fragments of urban forms and infrastructure. *Tel Aviv* was made possible with the support of the Polish Cultural Institute New York. www.PolishCulture-NYC.org



Maria, Gloucester, Massachusetts, 2011 © Paul Cary Goldberg

Tutta La Famiglia: Portrait of a Sicilian Café in America: Solo Show by Paul Cary Goldberg: Sept. 25-Oct. 23, 2015

Reception and Gallery Talk: Oct. 2, 2015, 5-7 pm

Paul Cary Goldberg's *Tutta la Famiglia: Portrait of a Sicilian Cafe in America* began in spring 2007 when he started photographing inside Caffé Sicilia. Goldberg writes, "I had been a semi-regular patron for about eight years so I was already familiar to many of



the regulars – mostly men, most of Sicilian heritage: fishermen, stone masons, tile masons, businessmen, plasterers, house painters and electricians. Still, we were all wary when I began showing up every morning with my camera. They were suspicious of my motivations and I was worried about being intrusive, but as is often the case, sharing time together produced a mutual curiosity that wore these barriers down. I and my camera became as much a part of the morning routine as the clattering and tinkling of espresso cups and spoons, the hissing of steamed milk, the clanging thuds of the braccio slamming against the metal drawer to empty out the spent grounds, the caffeine rush, the morning cornetti, European football on TV and above all else, soaring above all else, those voices speaking Sicilian, all at once, rolling up and down, one louder than the other, insistent, confrontational, passionate, playful, flowing and crashing and ebbing and flowing like Gloucester sea waves through the air across the room." Goldberg was the recipient of the 2002 Print Center Selection Award, 76th Annual International Competition: Photography, The Print Center, Jacqueline van Rhyen, juror.

The Photo Review: Best of Show: Oct. 30-Dec. 4, 2015

Best of Show is the annual collaborative effort between The Photo Review and the Photography department at the University of the Arts, and features a diverse collection of prize-winning work by 16 photographers. This annual exhibition gives the public the opportunity to view the juried work featured in The Photo Review's 2015 competition issue. The University of the Arts has a longstanding relationship with The Photo Review, an independent journal of photography founded in 1976. The 2015 competition was juried by Laurence Miller, who has over 40 years of experience in the fine art photography market, not only as a gallerist and curator, but also as an active collector.

Rosenwald-Wolf Gallery

ANDERSON HALL, 333 S. BROAD ST., PHILADELPHIA, PA | WWW.UARTS.EDU/ABOUT/ROSENWALD-WOLF-GALLERY



Untitled © David Noonan

David Noonan: Aug. 24-Oct. 2, 2015

Theatricality, spirituality, authorship, authenticity—even our perceptions of time—are



questioned in Noonan's work. His paintings are assembled from images of avant-garde performances circa 1960 - 1970 depicting recycled rituals, barely recognizable, like shamanistic time-traveling. The pictures are collaged, cropped, enlarged and silkscreened and stitched onto distressed linen similar to Japanese Boru fabrics. The sewing and the dun colored supports recreate unique histories; reclamation rather than an appropriation. Noonan's images remain out of our clear ken like a dream. Too ceremonial to be sci-fi, too contemporary to be outré, his visions are unique in their uncanny felt presence. Noonan is represented by Foxy Production in NY, David Kordansky in LA, and Stuart Shave/Modern Art in London. This is his first exhibit in Philadelphia.

Cost: Free

For more info: <http://www.uarts.edu/events/2015/08/david-noonan>

Sol Mednick Gallery

TERRA HALL, 211 S. BROAD ST., 15TH FL., PHILADELPHIA, PA | WWW.UARTS.EDU/ABOUT/SOL-MEDNICK-GALLERY

Hours of Operation: Monday-Friday 10 am-5 pm | Weekends by appointment



© Youngho Kang

Youngho Kang: 99 Variations: Aug. 21-Sept. 18, 2015

In 2009, South Korean photographer Youngho Kang started the *99 Variations* project, which is a multifaceted series of self-portraits featuring Kang dressed as many different characters, with different poses and variations. Kang writes, "The metamorphic alchemy of the camera and the mirror. Inside me, there are gods, men and women, and androgynous beings. They co-exist with my present self, and 'we' are all interrelated. I brought a key, the camera, opened the door to the secret passage, the mirror, awakened my mythical archetypes, and lured them out into the world. To be connected to another 'me' reflected in the mirror, with an endlessly switching spot, is a kind of communication that blurs the distinction between the image and the reality. Which, I discovered at the end of my work. Music was turned on, and I took pictures of my selves while I danced and acted. It is at such times that myself and another me in the mirror are mixed. And the clear, objective 'I' soon disappears. The subject and the object endlessly switch spots, causing the fixed identity of me to disappear." This exhibition originated at the Center for Fine Art Photography in Fort Collins, CO.





© Aliya Naumoff

Taking Refuge: Aliya Naumoff '01: Sept. 25-Oct. 23, 2015

The works gathered for this exhibition by alumna Aliya Naumoff '01 (photography) are drawn from her work with Syrian refugees. According to the Huffington Post, "The number of Syrian refugees is currently approaching 4 million, with United Nations data showing women and children make up over three-quarters of that total. Hundreds of thousands from this diaspora are living in sprawling refugee camps along Turkey's southern border, and in a new short documentary by filmmaker and photographer Aliya Naumoff, a few women are sharing a look into life in those compounds. Aided by the US-Turkey relations advocacy group the Turkish Heritage Organization, Naumoff traveled to the Harran and Akcakale camps near the border with Syria, where she interviewed a number of women and girls about their experiences. What she found and decided to showcase in her film and photographs was an incredible resilience from female refugees who had fled the brutal conflict in their home country."

Aliya Naumoff will present a lecture on her work on Friday October 2 at 2:30 pm in the Photo Studio on the 15th floor of Terra Hall at 211 S. Broad Street.

Brad Temkin: Rooftop: Oct. 30-Dec. 4, 2015

Reception: Oct. 2, 2015, 5-7 pm

Chicago-based photographer Brad Temkin's *Rooftop* project explores the "green roofs" movement in contemporary architecture. Temkin writes, "It's been happening in the US for more than 10–12 years, in Germany and Switzerland –for over 40 years. It's biophilic! Biophilia literally means 'love of life or living systems.' We do better around nature. We're happier; we're more productive...I think it's more of a survival instinct. Right now, at this point in time this (the environment) is something that the world is focusing on because it means the survival. When you look at any civilization, the first thing you look at is the place they lived. The Vikings built their homes inside hills and had their reasons for that, such as insulation, use of space and security." The exhibition coincides with the publication of *Rooftop*, Radius Books, 2015. Shot in locations ranging from Chicago to Zurich, Temkin's images do more than merely document rooftop gardens. He situates his organic subjects within the steel, stone and glass angularity of urban structures, inviting viewers to revel in the open patterns and colors of these rooftop landscapes and their unobstructed connection to the sky.

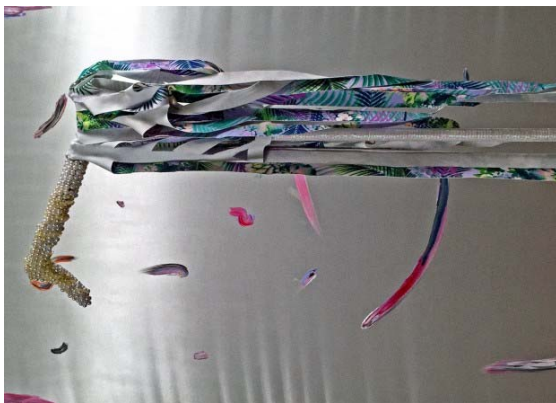


Vox Populi

319 N. 11TH ST., #3, PHILADELPHIA, PA | WWW.VOXPOPULIGALLERY.ORG

Founded in 1988, Vox Populi is an artist collective that works to support the challenging and experimental work of underrepresented artists with monthly exhibitions, gallery talks, performances, lectures, and related programming. For over 25 years, Vox Populi has played a unique role in the cultural life of Philadelphia by bringing our audience a diverse range of programming and providing a supportive environment in which artists can take risks and gain valuable professional experience. With a rotating membership and a commitment to working collectively, Vox Populi is a vital forum for the development and exchange of artistic ideas.

Hours of Operation: Wednesday-Sunday 12-6 pm



© Will Haughery

Will Haughery, Move in Silence: Sept. 4-27, 2015

It's the disgust / of a furrowed brow / in between sight and speech, / complacent still, /
Its weight grows.

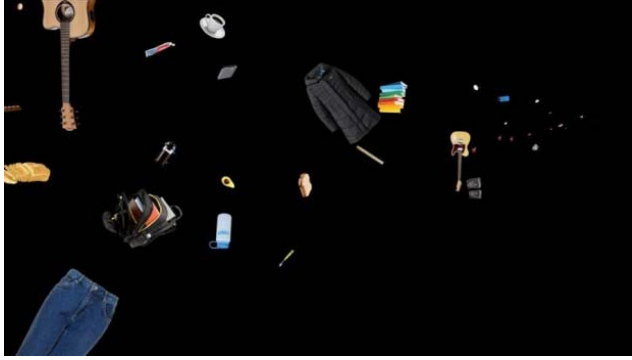
A knotted lower back, / with incomprehensible avoidance, / breathes heavy with
domination, / its voice thrown from above, in arrogance.

The anger and fear, / with head shaved bald, / the arm broken by law, / that sweat
that tickles the tip of the nose, / the reflection will burn.

Cost: Free

For more info: <http://voxpathuligallery.org/exhibitions/will-haughery-move-in-silence/>





© Maria Dumlao

Maria Dumlao, Next to Nothing: Sept. 4-27, 2015

Maria Dumlao's exhibition *Next to Nothing* is an installation comprised of animated still images, video, and sound that toys agnostically with the cyclical uncertainty of the transformation of energy, afterlife, and spirituality. It consists of three pieces, *Yours As Much As Mine*, a two-channel video installation; *Mimesis*, a single-channel video installation; and *Waiting For The Bridge*, sound from a record player with a 7-inch record.

Cost: Free

For more info: <http://voxpathuligallery.org/exhibitions/maria-dumlao-next-to-nothing/>



© Jay Muhlin

Jay Muhlin, Guilty Pleasure: Sept. 4-27, 2015

Guilty Pleasures is a photobook I have been working on for the past five years. This project deposits the viewer into an endless Syracuse, NY winter, with images that build a bizarre, collective psyche shared by a community of people who know they are about to hit an existential impasse. Readers will discover a group of friends who find comfort in their camaraderie, question where they will end up, and desperately try to keep control of their lives. (By Jay Muhlin)

Cost: Free

For more info: <http://voxpathuligallery.org/exhibitions/jay-muhlin-guilty-pleasures/>





West Laurel Hill Cemetery

215 BELMONT AVE., BALA CYNWYD, PA | WWW.FOREVER-CARE.COM

Teen Digital Photography Workshop: Halloween Photo Shoot with Main Line Art Center:

Oct. 28, 2015, 3:45-6 pm

Meet up with a Main Line Art Center Teaching Artist for a digital photography workshop that explores the beautiful grounds of West Laurel Hill Cemetery days before Halloween. Learn how to photograph the historic site at dusk on an autumn day. The workshop begins with a photo shoot, and then ends with a tour of the grounds by West Laurel Hill staff from 5:15-6 pm. Bring your fully charged digital camera and meet us on location. (meeting point: meet outside the Conservatory on West Laurel Hill Grounds, 215 Belmont Avenue, Bala Cynwyd, PA 19004, follow the red reflectors or signs to the Conservatory).



WP Gallery (Works on Paper, inc)

1611 WALNUT ST., #B, PHILADELPHIA, PA | WWW.WORKSONPAPER.BIZ

Specializing in 20th century contemporary prints and showcasing emerging artists.

Hours of Operation: Tuesday – Saturday 11 am-5 pm



© Distort

The Crusades: New work by 'Distort:' Nov. 7-Jan. 15, 2015

Opening Reception: Nov. 7, 2015

New challenging work by graffiti legend and PAFA Graduate Distort. This show will consist of fine art scrolls made from spraycans, fire extinguishers, and car hoods.

Cost: Free

For more info: www.worksonpaper.biz



www.mainlineart.org | 746 Panmure Road Haverford, PA 19041 | 610.525.0272