

# CALL FOR ENTRIES

Main Line Art Center



## 2014 Annual Members Exhibition

In celebration of our members' support and creative energy, we are proud to present the 2014 Members Exhibition.

Dec. 6, 2014 - Jan. 5, 2015



Best Art Gallery



Best Art Classes



Best Art Instruction

Non-Profit  
Organization  
U.S. Postage  
PAID  
Permit No. 35  
Wayne, PA

Main Line Art Center

746 Panmure Road  
Haverford, PA 19041

Enjoy the art of saving ...

Everyone in your family can enjoy substantial discounts, top-rank visual art instruction, and exhibitions, when you become a Member of Main Line Art Center. Join Today!



Celebrating over 75 years of "Art for Everyone!"

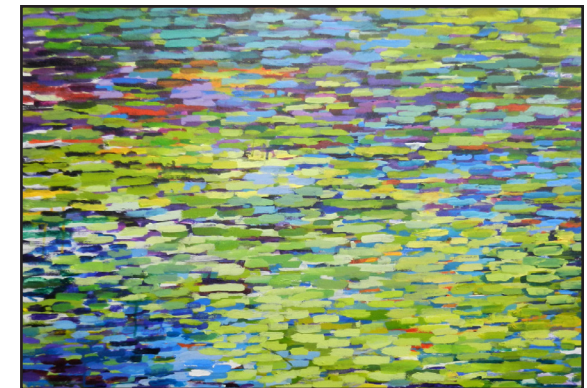
# PROSPECTUS

## Annual Members Exhibition 2015

**Prospectus:** [www.mainlineart.org/events.php](http://www.mainlineart.org/events.php)

**Application:** <http://mainlineart.slideroom.com>

**Contact:** Beth Boardman, Exhibition Coordinator,  
[bboardman@mainlineart.org](mailto:bboardman@mainlineart.org), 610-525-0272 x116



# 2014 Annual Members Exhibition

## December 6, 2014 - January 5, 2015

### Reception and State of the Art Center:

Friday Dec. 12th, 5:30-7:30 pm

MLAC provides food and drink,

Members provide dessert potluck

### About the Exhibition

In celebration of our Members support and creative energy, we are proud to present our annual 2014 Main Line Art Center Members Exhibition. The opening of the exhibition, which features a range of works in photography, sculpture, painting, printmaking, mosaics, ceramics and more coincides with our annual State of the Art Center presentation on December 12th.

### Electronic Submission

We are now accepting all submissions online via Slideroom. Apply online at <http://mainlineart.slideroom.com>. There is no application fee however, there is a \$5.00 processing fee for Slideroom.

All entries must be submitted electronically via <http://mainlineart.slideroom.com> by 1:59 PM, October 13th to be accepted into the exhibition. We cannot accept paper applications. Work dropped off without prior registration to our website for the Members Exhibition prospectus and most frequently asked questions at [www.mainlineart.org/event\\_detail.php?id=188](http://www.mainlineart.org/event_detail.php?id=188).

### Eligibility

Open to all current adult Members of Main Line Art Center. Teaching Artists must be Full Members to participate. One piece per Member. New Members are welcome. Membership must be current through the last day of the show (January 5, 2015). Renew early to avoid delays in processing at artwork drop off time. MLAC charges no fee to participate. This exhibition is a Member benefit and is not a juried show. All work that meet the requirements will be shown.

## CALENDAR

**Application Deadline**  
Monday, October 13, 2014

**Exhibition Dates**  
Dec. 6, 2014 - Jan. 5, 2015

### Delivery Dates

Sunday, November 30  
10am-4pm

Monday and Tuesday, Dec. 1-2  
10am-5pm

### Pick Up

Tuesday and Wednesday,  
January, 6 and 7, 2015  
9am-5pm

### Reception/State of the Art Center

Friday, December 12, 2014  
5:30-7:30pm

ARTWORK LABEL	
NAME	_____
ADDRESS	_____
PHONE	_____
TITLE	_____
MEDIUM	_____
DIMENSIONS (H" X W" X D")	_____
YEAR	_____
PRICE	_____

Fill out completely, then affix to the back side of artwork.

### Awards

The Award Juror is Tu Huhyn, Art Program Director for Art in City Hall in Philadelphia. Awards will be announced at the reception on Friday, December 12th, 5:30-7:30pm.

### Delivery and Pick Up

Hand deliveries of artwork only. Entries must be wired and ready to display with completed entry form. All pieces must be labeled using the form provided. Label should be securely fastened to the back of your piece. Pieces not picked up by January 7, 2015 will be charged a \$10 per day storage fee.

### Requirements

All work submitted must have been completed within the past three years and not previously exhibited at Main Line Art Center. The maximum width of any piece should be no greater than 3 feet. All two dimensional work must be framed, securely exhibited and ready to hang or it will not be exhibited.

### Sales and Liability

The Art Center will retain 35% commission on all sales from its galleries.

*Want to learn more about Slideroom.com?*

We are hosting a FREE

Slideroom Tutorial by

Laurie Canfield, MLAC Registrar

Friday, September 19, 1-2 pm

RSVP: 610.525.0272

### For questions or more information

#### email:

Beth Boardman, Exhibition Coordinator  
[bboardman@mainlineart.org](mailto:bboardman@mainlineart.org)

#### or call:

610.525.0272, ext. 116