



746 Panmure Road
Haverford, PA 19041
610.525.0272
www.mainlineart.org

FOR IMMEDIATE RELEASE

CONTACT: Rachel Ammon, Communications Dir. | 610.525.0272 x125 | rammon@mainlineart.org



Stunning Art in Main Line Art Center's Spring Gala Exhibition & Fundraiser Benefits Programs for Artists with Disabilities

May 2 - June 7, 2015

Paint the Town Red Preview Party: Friday, May 1, 7-10 pm | *Tickets Available*
Artist Reception & Sensory Garden Party: Saturday, May 30, 1-3 pm | *Free*

HAVERFORD, PA (April 9, 2015)— Art lovers rejoice! Main Line Art Center's upcoming Spring Gala Exhibition & Fundraiser offers stunning professional works of art that you'll be eager to add to your collection, and can feel truly good about acquiring. Proceeds from sales benefit the Art Center's Programs, including their award-winning Accessible Art Programs for children and adults with disabilities and at-risk youth. Juried by Pam Regan, owner of Bluestone Fine Art Gallery in Philadelphia, the Spring Gala Exhibition runs May 2 through June 7 and features 2 and 3-D works of art in an array of styles from 101 respected artists from the area.

The exhibition opens with a ticketed preview, Paint the Town Red Preview Party, on Friday, May 1 beginning at 6:30 pm for early admission, and 7 pm for general admission until 10 pm. Guests are invited to don red, just a touch or head-to-toe, and enjoy creative cuisine, cocktails, music, and dancing, and will have access to silent auctions featuring culinary experiences and wine pairings. New this year, the Preview Party will feature Red Dot Reserve, an exciting twist on art-buying that puts the power of the red dot, the traditional symbol that a work has sold, in the hands of Preview Party guests. Guests who acquire their artwork before 8:30 pm using their red dots will be exclusively eligible for a grand prize.

Early admission tickets to the Paint the Town Red Preview Party are \$200 and general admission tickets are \$150. New this year, young friend/under 40 tickets are \$100 per person, or \$150 for two tickets. To purchase tickets, call

610.525.0272, ext. 113. Beginning May 2, the Spring Gala Exhibition is free and open to the public. Main Line Art Center's galleries are open Monday through Thursday from 10 am to 8 pm and Friday through Sunday from 10 am to 4 pm.

Spring Gala Exhibition and Paint the Town Red Preview Party is supported Pioneer Partners, Wilkie Lexus and West Laurel Hill Cemetery, Producing Partner The Bryn Mawr Trust Company, and Catalyst Partners, myCIO Wealth Partners, The Shipley School, EBE, and High Swartz LLP.

The Spring Gala Exhibition features the work of the following artists (list incomplete):

Elyce Abrams, Lauren Acton, Kassem Amoudi, Deena S. Ball, Sharon Bartmann, Sandra Benhaim, John A. Benigno, Paulette Bensignor, Anuradha, Bhat, Barbara Bix, Kim Bogart, James Brantley, Bill Brookover, Howard Brotman, Charles Burrus, Jodi Cachia, Lisa Call, Sean Carney, Jeff Carpenter, Nick Cassway, Lesa Chittenden Lim, Barbara Chotiner, Virginia Conover, Nic Coviello, Chris Cox, Morgan Craig, Mark Curcio, Charles Dagit, Susan K. D'Alessio, Richard Davidson, M. Pia De Girolamo, Judy Delfiner, Frank DePietro, Marion Di Quinzio, Lilliana Didovic, Marlene B. Dubin, Laura Ducceschi, Stephanie Elden, Ekaterina Ermilkina, Liz Finley, Kirsten Fischler, Leslie Friedman, Stephanie Fuentes, Jill Galloway Sherman, Linda Dubin Garfield, Mo Gerngross, Barbara Glickman, Lolly Grilli, Antonio Grimaldi, Ann Guidera-Matey, Marguerita Hagan, Andrea Harris, Fonda Hartman, Elizabeth Heller, Nancy Herman, Ana B Hernandez, Grace Hill, Catherine Hipple, Su Horty, Linnie Kerrigan-Greenberg, Mark Khaisman, Nancy Kress, Danny Laffey, Megan Lawlor, Deborah Leavy, Dale Levy, Elaine Lisle, Allison Lit, Jen McCleary, Sherry McVickar, Abby Mezrow, Stanley Muravchick, Deirdre Murphy, Roe Murray, Lee Muslin, Nancy Neill, Susanne Okamoto, Joseph Opshinsky, Heather Ossandon, Rinal Parikh, Doris Peltzman, Mary Powers Holt, Dexiang Qian, Linda Ramsay, Marcia Reiver, Claire Shenk Rodgers, Lois Schlachter, Maria Schneider, Lois Sellers, Francine Shore, George Shortess, Barry Simon, Dori Spector, Darryl Spencer, Helge Speth, Susan Stefanski, Nancy Tabas, Gloria Whitney, Armen Yepoyan, and Rachel Zimmerman.

During the Spring Gala Exhibition, artwork created by Accessible Art participants will be on exhibit throughout the Art Center and in the Welcome Gallery, as well as at Bryn Mawr Hospital and Ludington Library. The Accessible Art Exhibitions include work from the Art Center's Exceptional Art Program for children, teens, and adults with disabilities, as well as the Center's programs with partner organizations the Center for the Blind and Visually Impaired, JCHAI, theVillage (formerly Presbyterian Children's Village), and PA School for the Deaf. A free Artist Reception and Sensory Garden Party/Ice Cream Bowl Fundraiser is planned for Saturday, May 30 from 1 to 3 pm at Main Line Art Center to honor the inspiring artists in the exhibitions.

Main Line Art Center is our community's home to discover, create, and experience visual art. From our award-winning visual art classes, to our contemporary and innovative exhibitions, you can count on quality and expect the unexpected at Main Line Art Center. The art we exhibit, teach, and share is intended to exceed expectations as it inspires creativity, conversation, and joy. The mission that underscores all we do is to inspire and engage artistic creativity for all ages and abilities and to celebrate and strengthen the essential role of visual art in community life. Last year we inspired 16,000 people at Main Line Art Center and touched the lives of over 80,000 through our Exhibitions in the Community and festivals across the Philadelphia area.

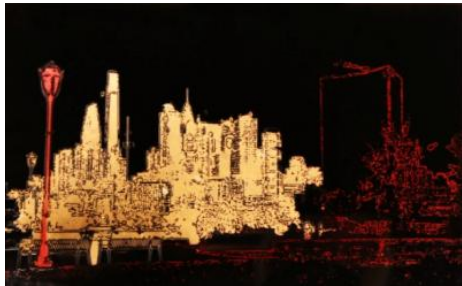
Main Line Art Center is located at 746 Panmure Road in Haverford, behind the Wilkie Lexus dealership just off of Lancaster Avenue. The Art Center is easily accessible from public transportation and offers abundant free parking. For more information about Main Line Art Center's Spring Gala Exhibition or Paint the Town Red Preview Party, please visit www.mainlineart.org or call 610.525.0272.

###

Images are attached to this email and are available upon request.



Gloria Whitney
Crossing To New Jersey - Ben Franklin Bridge
2014



Maria Schneider
The Red District
2015



Marcia Reiver
It's All in the Color of the Feather
2014

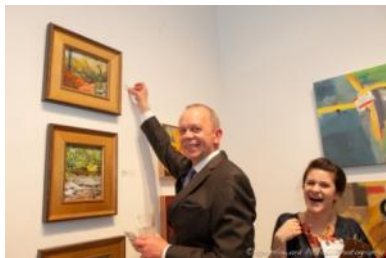


Photo by Howard Pitkow

Suggested caption:

The Paint the Town Red Preview Party features Red Dot Reserve, an exciting twist on art-buying that puts the power of the red dot, the traditional symbol that a work has sold, in the hands of Preview Party guests.