



Main Line Art Center

746 Panmure Road
Haverford, PA 19041
610.525.0272
www.mainlineart.org

FOR IMMEDIATE RELEASE

CONTACT: Rachel Ammon, Communications Director
610.525.0272, ext. 125 rammon@mainlineart.org



Lori F. Banks

Main Line Art Center Presents Lori F. Banks at Ringpfeil Advanced Dermatology

April 5 – October 5, 2013

Opening Reception: Friday, May 17, 6:30 - 8 pm

Presented by Main Line Art Center, In Collaboration With:



HAVERFORD, PA (April 25, 2013)— Main Line Art Center is proud to present the work of Professional Artist Member Lori F. Banks at Ringpfeil Advanced Dermatology in Haverford. The exhibition, which opened April 5, will run through October 5, and features 46 abstract works influenced by nature and Banks' love of the outdoors. She captures unrestrained energy and playfulness through the use of bold colors and spontaneous lines with layered paint. A free opening reception will be held on

Friday, May 17 from 6:30 to 8 pm at Ringpfeil Advanced Dermatology. RSVPs are requested to rad@ringpfeilderatology.com.

Banks' exhibition is part of Main Line Art Center's *Exhibitions in the Community Program*, which places the work of its accomplished artists in libraries, hospitals, and other community settings. *Exhibitions in the Community* grew out of the Art Center's mission of making art more accessible by creating meaningful partnerships with local businesses and organizations. This is the first exhibition of a series with Ringpfeil Advanced Dermatology.

Lori F. Banks, a graduate of Cornell University, owned a Philadelphia graphic design/web and corporate branding business from 1982 until 2008, when the business was sold so she could pursue painting, teaching, and new business ventures. Banks has exhibited her work in several exhibitions at Main Line Art Center, as well as Muse Gallery (Philadelphia), GoogleWorks (Reading), Highwire Gallery (Philadelphia), 3rd Street Gallery (Philadelphia), Wayne Art Center (Wayne), Cheltenham Center for the Arts, Montgomery County Guild of Professional Artists (Conshohocken), the Philadelphia Sketch Club, Tri State Artists Equity Exhibits (Chester, West Chester, and Wayne), and Mill Creek Capital Advisors (Conshohocken).

"Every time I apply paint to a canvas, the experience always has me on edge, a little uncomfortable," says Banks. "But the art unfolds as I work and, and expresses a part of me that I am unable to communicate through words. My paintings challenge me, and I hope they will engage you too." For more about Banks, visit her website at www.lorifbanks.com.

Ringpfeil Advanced Dermatology provides premium general dermatology, cosmetic dermatology, dermatological surgery, and laser surgery to the Philadelphia, Main Line, and Delaware Valley area. The practice was founded by Franziska Ringpfeil, MD., a board certified dermatologist who practiced and taught dermatology at top medical centers in both Europe and the US and is now offering her expertise in a private distinctive setting on the Main Line. The practice provides uncompromised quality of care through experience, technology, and focus on patient satisfaction. For more information about Ringpfeil Advanced Dermatology, visit www.ringpfeilderatology.com or call 610.525.5250.

For over 75 years, **Main Line Art Center** in Haverford has served as the creative home for generations of community members of all ages, levels and abilities. Its mission is to inspire and engage artistic creativity for all ages and abilities and to celebrate and strengthen the essential role of visual art in community life. Each year, the Art Center educates nearly 5,000 people through its art classes, outreach programs, lectures, and art camp. In keeping with its mission, Main Line Art Center pioneers a unique series of outreach programs for children and adults with developmental and physical disabilities, and grants \$12,000 in need-based scholarships annually. The Art Center has built a reputation for presenting innovative, thought-provoking exhibitions, while also presenting exhibitions that celebrate community. We offer up to ten annual exhibitions in our beautiful, spacious gallery and exhibitions throughout the community. These exhibitions feature the work of emerging and established artists from across the Mid-Atlantic Region and attract over 10,000 visitors each year.

Main Line Art Center is located at 746 Panmure Road in Haverford, behind the Wilkie Lexus dealership just off of Lancaster Avenue. The Art Center is easily accessible from public transportation and offers abundant free parking. For more information about the *Exhibitions in the Community Program*, please visit www.mainlineart.org or call 610.525.0272.

#

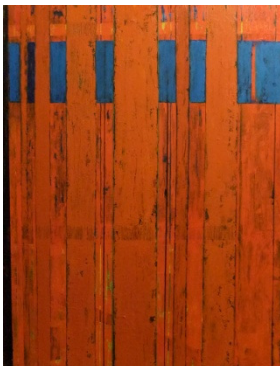
Photographs are attached to this email and are available upon request.



Lori F. Banks
Brulée
Acrylic on Canvas
30" x 40"



Lori F. Banks
Wild Rumpus 1
Acrylic on Canvas
36" x 24" Left Diptych
(72" x 24" combined)



Lori F. Banks
Window View
Acrylic on Canvas
36" x 48"