



ART CENTER

CALL FOR ENTRIES

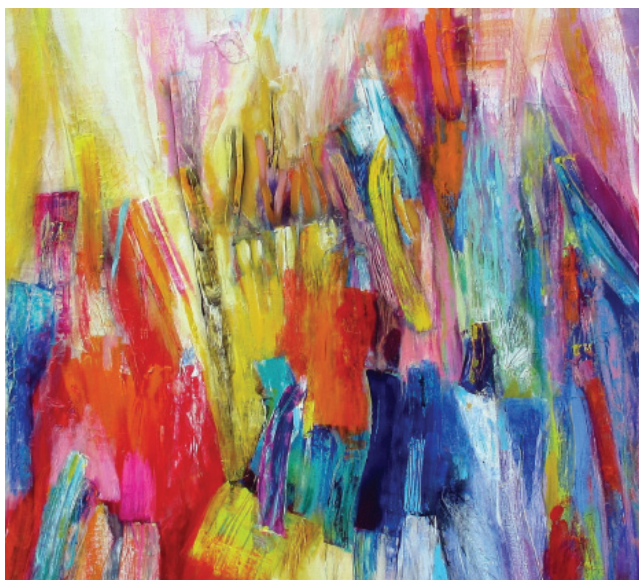


2017 Annual Members Exhibition December 1, 2017 – January 3, 2018

In celebration of our Members' support and creative energy, we are proud to present the 2017 Members Exhibition.

APPLICATION DEADLINE:
October 24, 2017

For questions & info: Chelsea Markowitz, Exhibition Assistant
610.525.0272 ext. 116 | cmarkowitz@mainlineart.org



ABOUT THE EXHIBITION

In celebration of our Members' support and creative energy, we are proud to present the 2017 Main Line Art Center Members Exhibition. The opening of the exhibition, which features a range of works in photography, sculpture, painting, printmaking, mosaics, ceramics and more, coincides with our annual State of the Art Center presentation on Friday, December 1.

ELECTRONIC SUBMISSION

All entries must be submitted electronically via <http://mainlineart.slideroom.com> by 11:59 pm on October 24 to be accepted into the exhibition. There is no application fee however, there is a \$5.00 processing fee for Slideroom. We cannot accept paper applications. Work dropped off without prior registration to slideroom cannot be accepted, no exceptions. Please visit our website for the Members Exhibition prospectus and most frequently asked questions at www.mainlineart.org.

ELIGIBILITY & REQUIREMENTS

All adult Members (current through Jan. 3, 2018) are invited to show one piece completed within the past three years and not previously exhibited at Main Line Art Center. The maximum width and height of any piece should be no greater than 3 feet. All 2-D work must be framed, securely wired and ready to hang or it will not be exhibited.

ART SALES

The Art Center will retain 40% commission on all sales from its galleries.

AWARDS

The Awards Juror is Paula Jackson, Owner of Beauty Art Gallery in Newtown Square, PA. Awards will be announced at the reception on Friday, December 1, 5:30-7:30 pm.

DELIVERY AND PICK UP

Hand deliveries of artwork only. Entries must be wired and ready to display with completed entry form. All pieces must be labeled using the form provided. Label should be securely fastened to the back of your piece. Pieces not picked up by January 5 will be charged a \$10 per day storage fee.

MAIN LINE ART CENTER

746 Panmure Road, Haverford, PA
610.525.0272 | www.mainlineart.org

For questions & info: Chelsea Markowitz, Exhibition Assistant
610.525.0272 ext. 116 | cmarkowitz@mainlineart.org

DATES

Application Deadline:
Wed., October 24, 2017

Exhibition Dates:
December 1, 2017 – January 3, 2018

Delivery Dates:
Nov. 21-22, 9am-8pm
Nov. 27, 9am-10:30am

Pick Up:
Jan. 4-5, 10am-5pm

Reception/State of the Art Center:
Fri., December 1, 5:30-7:30pm

ARTWORK LABEL

Fill out completely, then affix to back of artwork.

NAME

ADDRESS

PHONE

TITLE

MEDIUM

DIMENSIONS (H X W X D)

YEAR

PRICE