



746 Panmure Road  
Haverford, PA 19041  
610.525.0272  
www.mainlineart.org

FOR IMMEDIATE RELEASE

CONTACT: Rachel Ammon, Communications Dir. | 610.525.0272 x125 | rammon@mainlineart.org



# Jewels & Treasures

**Jewels & Treasures Fine Art Exhibition Benefits Main Line Art Center's Programs for Children & Adults with Disabilities**

**May 9 - June 6, 2014**

**Preview Party: Friday, May 9, 7-10 pm - Tickets Available**  
**Artist Reception & Sensory Garden Party: Saturday, May 31, 1-3 pm**



HAVERFORD, PA (April 17, 2014)— Supporting life-changing Accessible Art Programs for children and adults with disabilities, at-risk youth, and low-income families has never been more beautiful with Main Line Art Center's *Jewels & Treasures* Fine Art Exhibition and Benefit, running May 9 through June 6. Juried by Eileen Tognini, Curator, Collaborator, and Innovator, the stunning exhibition features

professional and affordable 2 and 3-D works of art in a variety of styles from over 65 notable artists from the area. *Jewels & Treasures* is supported by Topaz Partner, Wilkie Lexus, and Sapphire Sponsors, The Bryn Mawr Trust Company, High Swartz LLP, and myCIO Wealth Partners, LLC. Proceeds support the Art Center's Programs, including Accessible Art Programs, which have transformed thousands of lives in their 50 years and have positioned the Center as a resource on a local and national level.

*Jewels & Treasures* will open with an elegant Preview Party on Friday, May 9 beginning at 6:30 pm for early admission, and 7 pm for general admission until 10 pm, honoring longtime supporters Charlie and Susan Bloom. Guests will savor indulgent culinary creations and cocktails and enjoy live music while previewing the exhibition which expands for one night only to feature stunning, hand-selected jewelry designs from Abra Gorby, Elements and Alloys, Emily Keifer, J. Rudy Lewis, Marthe Roberts/Shea and Mira Ramchandani. Guests can also enter to win one of 11 lavish raffle baskets filled with gifts and unique experiences valued at up to \$3100.

Early admission (6:30 pm entry) tickets to the Preview Party are \$200 and general admission tickets (7 pm entry) are \$150. Party packages, which include raffle tickets, early admission and a discount on artwork, are available for groups of 2 to 10 people. To purchase tickets, call 610.525.0272, ext. 112. Beginning May 10, *Jewels & Treasures* is free and open to the public. Main Line Art Center's galleries are open Monday through Thursday from 10 am to 8 pm and Friday through Sunday from 10 am to 4 pm.

*Jewels & Treasures* features the work of the following artists (list incomplete):

Lauren Acton, Kassem Amoudi, Deena S. Ball, Sharon Bartmann, Sandra Benhaim, John A. Benigno, Mish-el Benjamin, Paulette Besignor, Anuradha Bhat, June Blumberg, Priscilla Bohlen, James Brantley, Elizabeth Breakell, Mo Brooker, Charles Burrus, Donald E. Camp, Jane Cary, Lesa Chittenden Lim, Suzanne Comer, Eve Cook, Constance Culpepper, Marlene B. Dubin, Liz Finley, Stephanie Fuentes, Jill Galloway Sherman, Linda Dubin Garfield, Barbara Glickman, Nancy E.F. Halbert, Dwight Harris, Melissa Husted-Sherman, Rebecca Jacob, Jackie Kane, Monique Kendikian-Sarkessian, Anna Kocher, Monique Lazard, Deborah Leavy, Adam Levin, Dale Levy, Elaine Lisle, Sandi Neiman Lovitz, Carol Maguire, Christine Meyer, Betsy R. Miraglia, Deirdre Murphy, Lee Muslin, Stephanie Nicholson, Doris Peltzman, Susanne Pitak Davis, Mary Powers Holt, Claire Shenk Rodgers, Dorothy Roschen, Val Rossman, Maria Schneider, Francine Shore, Deb K. Simon, Andrea G. Snyder, Dori Spector, Helge Speth, Susan Stefanski, Carol Stirton-Broad, Nancy Tabas, Gloria Whitney, Ruth Wolf, Edward Woltemate, and Rebecca Yurkevicz-D'Angeli.

During *Jewels & Treasures*, artwork created by Accessible Art participants will be on exhibit throughout the Art Center and in the Welcome Gallery, as well as at Bryn Mawr Hospital, Ludington Library and Philadelphia's City Hall. The Accessible Art Exhibitions include work from the Art Center's Exceptional Art Program for children, teens and adults with physical and cognitive disabilities, as well as the Center's programs with partner organizations the Center for the Blind and Visually Impaired, Elwyn, and the Village (formerly Presbyterian Children's Village). A free Artist Reception and Sensory Garden Party is planned for Saturday, May 31 from 1 to 3 pm at Main Line Art Center to honor the inspiring artists in the exhibitions and celebrate the Center's new Sensory Garden.

Main Line Art Center is a welcoming and inclusive creative home where everyone is encouraged to create, experience, and discover the value of art. Committed to making art more accessible, the Art Center has over 75 years of experience presenting art programs for individuals of all ages and abilities, including a unique series of Accessible Art programs, now celebrating their 50<sup>th</sup> anniversary, for children and adults with developmental and physical disabilities, at-risk youth, and low income families.

Throughout the year, Main Line Art Center presents innovative, contemporary art exhibitions in their award-winning gallery, as well as exhibitions that celebrate community. Last year over 16,000 people chose Main Line Art Center as their home for creativity.

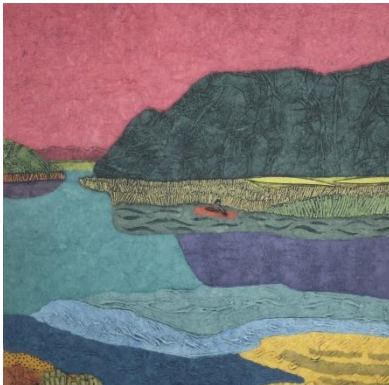
Main Line Art Center is located at 746 Panmure Road in Haverford, behind the Wilkie Lexus dealership just off of Lancaster Avenue. The Art Center is easily accessible from public transportation and offers abundant free parking. For more information about *Jewels & Treasures*, please visit [www.mainlineart.org](http://www.mainlineart.org) or call 610.525.0272.

# # #

Images are attached to this email and are available upon request.



John A. Benigno  
"Looking Up"  
2014



Betsy Miraglia  
"Solitude"  
2013



Claire Shenk Rodgers  
"Angel Pot"  
2014